



Executive Committee Meeting Notice

Thursday, February 22, 2024 ♦ 11:00 a.m.

Midlands Technical College – Harbison Campus (in person)

7300 College Street, Irmo, SC 29063

Continuing Education Center, Room 113 and Zoom Meeting (Virtual)

<https://us02web.zoom.us/j/83551176583?pwd=SERWam1MS0hGSnNpNDFNWnIVRDIXQT09>

Meeting ID: 835 5117 6583 ♦ Passcode: 626584 ♦ Dial-In Number (929) 205-6099

DATE: February 15, 2024

TO: CMCOG Executive Board Members:
Will Brennan, City of Columbia, Chairman
Annie McDaniel, Fairfield County, Vice-Chairperson
Foster Senn, City of Newberry, Immediate Past Chairman
Todd Cullum, Lexington County
Clarence Gilbert, Fairfield County
Darrell Hudson, Lexington County
Paul Livingston, Richland County
Haskell Kibler, City of Forest Acres
Walt McLeod, Newberry County
John McMeekin, Town of Winnsboro
Chakisse Newton, Richland County
Elise Partin, City of Cayce
Peter Brown, City of Columbia
Howard Duvall, City of Columbia
Vina Abrams, Newberry County

FROM: Will Brennan, CMCOG Board Chair

SUBJECT: **Executive Committee Meeting – February 22, 2024 at 11:00 A.M**

Please be advised that the next meeting of the Executive Committee of Central Midlands Council of Governments will be held on **Thursday, February 22, 2024 at Midlands Technical College Harbison Campus, Continuing Education Center, Room 113. See attached map of the campus for additional information.**

The meeting will start promptly at 11:00 A.M., so please connect to the call early so we can start the meeting on time.

Please remember if we do not hear from you, we expect that you will be attending the meeting.

Enclosures

Serving Local Governments in South Carolina's Midlands

236 Stoneridge Drive, Columbia, SC 29210 ♦ (803) 376-5390 ♦ FAX (803) 376-5394 ♦ Web Site: <http://www.centralmidlands.org>



Executive Committee Meeting

Thursday, February 22, 2024 ♦ 11:00 a.m.

Midlands Technical College – Harbison Campus (in person)

7300 College Street, Irmo, SC 29063

Continuing Education Center, Room 113 and Zoom Meeting (Virtual)

<https://us02web.zoom.us/j/83551176583?pwd=SERWam1MS0hGSnNpNDFNWNlVRDlXQT09>

Meeting ID: 835 5117 6583 ♦ Passcode: 626584 ♦ Dial-In Number (929) 205-6099

OVERALL AGENDA

ACTION	A. <u>Call to Order and Introductions</u>	Will Brennan, Chair
	1. Determination of a Quorum	
	2. Approve Order and Contents of the Overall Agenda	
	B. <u>Consent Agenda</u>	
	1. Approval of the January 25, 2023 Executive Committee Minutes (<i>Attachment 1</i>)	
	2. *FY 2023 – 2033 COATS MPO Transportation Improvement Program (TIP) (<i>Enclosure 2</i>)	
	3. FY 2023 – 2033 CMCOG RPO Transportation Improvement Program (RTIP) (<i>Enclosure 3</i>)	
	4. 2045 LRTP Amendment – Regional Transportation Operations (<i>Enclosure 4</i>)	
	5. *2020 – 2027 TIP Amendment – Columbia Traffic Signals Study (<i>Enclosure 5</i>)	
	C. <u>Regular Agenda</u>	
	1. Monthly Financial Status Report (December 2023) (<i>Enclosure 6</i>)	Melissa Labbe
	2. 208 Plan Amendment: Richland County-Eastover WWTP Expansion (<i>Enclosure 7</i>)	Gregory Sprouse
INFORMATION	D. <u>Announcements / Committee or Staff Reports / Correspondences</u>	
	1. Executive Director’s Report	Britt Poole
	E. <u>Old/New Business</u>	
	F. <u>Other Business</u>	
	G. <u>Adjourn</u>	

REMINDER: The next CMCOG Executive Committee Meeting will be held on Thursday, March 28, 2024

Note: Full Agenda packets can be found on the CMCOG website at www.cmcog.org.

*Denotes item is a Metropolitan Planning Organization (MPO) Urbanized Area Request



Executive Committee Meeting of the
Central Midlands Council of Governments
Thursday, January 25, 2024 ♦ 11:00 a.m. ♦ Midlands Technical College
Harbison Campus – 7300 College Street, Irmo, SC 29063
Continuing Education Center, Room 113 and via Zoom (Virtual)
Meeting ID: 832 5963 7185 ♦ Passcode: 296695 ♦ Dial-In Number (929) 205-6099

Executive Committee Members Present:

Will Brennan, *CHAIR*, Columbia City Council
Peter Brown, Columbia City Council
Todd Cullum, Lexington County Council
Clarence Gilbert, Fairfield County Council
Darrell Hudson, Lexington County Council
Haskell Kibler, Forest Acres City Council
Annie McDaniel, *Vice-Chair*, Fairfield Co. Leg. Del.
Walton McLeod, Newberry County
John McMeekin, Mayor, Town of Winnsboro
Foster Senn, Mayor, City of Newberry

Staff Members Present:

Fretoria Addison, LTC Ombudsman Volunteer Coordinator/Information Support Specialist
Aleigha Chee-you, Ombudsman Program Assistant
Anna Harmon, Area Agency on Aging Director
Missi Labbe, Financial Director
Britt Poole, Executive Director
Kelly Roberson, Executive Clerk to Boards
Reginald Simmons, Deputy Executive Director/Transportation Director
Gregory Sprouse, Director, Research & Planning
Lilnora White, HR Manager

Guests:

Will Dilliard, Belser Law Firm

A. CALL TO ORDER AND INTRODUCTIONS

A1. Chairman Will Brennan called the meeting to order at 10:59 a.m. on January 25, 2024. Chairman Brennan stated that a quorum was present at the time meeting was called to order.

A2. APPROVE ORDER AND CONTENTS FOR THE OVERALL AGENDA

MOTION, *approved*

John McMeekin moved for approval, seconded by Clarence Gilbert to approve the Order and Contents of the Overall Agenda. The motion was approved.

B. CONSENT AGENDA

B1. Approval of the December 14, 2023 Executive Committee Minutes

B2. Approval of the August 24, 2023 Executive Committee Minutes

B3. 2045 LRTP Amendment – 2020 – 2024 Safety Performance Measures

MOTION, *approved*

Darrell Hudson moved for approval, seconded by Clarence Gilbert to approve the Order and Contents of the Overall Agenda. The motion was approved.

C. REGULAR AGENDA

C1. Monthly Financial Status Report (November 2023)

Missi Labbi gave presentation regarding the Monthly Financial Status Report (November 2023).

A brief discussion took place.

No action was taken on this item at this time. Chairman Brennan stated that this report would be taken for information only.

C2. FY 2023 - 2024 CMCOG Budget Adjustment

Missi Labbi, Finance Director and Britt Poole, Executive Director gave presentation regarding the FY 2023 – 2024 CMCOG Budget Adjustment. It was noted that most of the changes are due to increases in personnel for the Aging, Transportation, and Planning Departments. These changes provide CMCOG the opportunity to access untapped funds that were available to these programs.

A brief discussion took place.

MOTION, *approved*

Foster Senn moved for approval, seconded by Darrell Hudson to approve the FY 2023 – 2024 CMCOG Budget Adjustment. The motion was approved.

C3. *FY 2023 – 2033 COATS MPO Transportation Improvement Program (TIP)

Reginald Simmons requested approval to adopt the 2023 – 2033 COATS MPO Transportation Improvement Program (TIP). Per federal guidance, every 4 years in coordination with SCDOT, CMRTA, and other agencies, the COATS MPO reviews and updates its Transportation Improvement Program. This program serves as the short range capital improvements program for funding and implementation of roadway, transit, and non-motorized transportation improvements projects. Included in the TIP are several major categories which include the guideshare projects, intersection improvements, project exempt from guideshare, transportation alternatives, and transit. Mr. Simmons referred to a handout which included the following:

Guideshare Program

- Approximately \$300 million is expected to be obligated through FY 2033 on road widenings, intersection improvements, planning feasibility studies, interchange improvements, and enhancement projects.

Enhancements Program

- Twelve (12) active projects have been identified with approximately \$4.8 million in federal dollars expected to be obligated through FY 2033. New enhancement projects will continue to be added on an annual basis.

Transit Program

- Section 5307 – Large Urban Funds – Approximately \$13 million has been programmed in previous years
- Section 5307 – Large Urban Funds – Approximately \$14 million has been programmed in CARES Act Funding
- Section 5307 – Large Urban Funds – Approximately \$8 million has been programmed in ARP Funding
- Section 5310 – Enhanced Mobility – Approximately \$2.8 million has been programmed
- Section 5339 – Bus and Bus Facilities – Approximately \$5.2 million has been programmed in previous years
- New transit projects will continue to be added on an annual basis.

Federal Appropriations

- Four (4) active projects have been identified with approximately \$15.1 million federal dollars expected to be obligated. New projects will continue to be added on an annual basis.

Recreational Trails

- Seven (7) active projects have been identified with approximately \$2 million in federal dollars expected to be obligated through FY 2033. New projects will continue to be added on an annual basis.

Exempt from Guideshare Federal Aid Bridge Projects

- Twenty-Three (23) active projects have been identified with approximately \$370 million in federal dollars expected to be obligated. New bridge projects will continue to be added on an annual basis.

Exempt from Guideshare Federal Aid Intersection & Safety Projects

- Nineteen (19) active projects have been identified with approximately \$48 million in federal dollars expected to be obligated. New intersection and safety projects will continue to be added on an annual basis.

Exempt from Guideshare Federal Aid Interstate & Corridor Improvement Projects

- Nineteen (19) active projects have been identified with approximately \$3.7 billion in federal dollars expected to be obligated. New interstate & corridor improvement projects will continue to be added on an annual basis.

MOTION, approved

Todd Cullum moved for approval, seconded by John McMeekin to adopt the *FY 2023 – 2033 COATS MPO Transportation Improvement Program (TIP). The motion was approved.

C4. *FY 2023 – 2033 CMCOG RPO Transportation Improvement Program (RTIP)

Reginald Simmons requested approval to adopt the 2023 – 2033 CMCOG Rural Transportation Improvement Program (RTIP). Per federal guidance, every 4 years in coordination with SCDOT, CMRTA, and other agencies, the CMCOG reviews and updates its Transportation Improvement Program. This program serves as the short range capital improvements program for funding and implementation of roadway, transit, and non-motorized transportation improvements projects. Included in the TIP are several major categories which include the guideshare projects, intersection improvements, project exempt from guideshare, bridges, interstate & corridor improvements, and transit. Mr. Simmons referred to a handout which included the following:

Guideshare Program

- Approximately \$55 million is expected to be obligated through FY 2033 on road widenings, resurfacings, intersection improvements, planning feasibility studies, interchange improvements, and signal system improvement projects.

Exempt from Guideshare Federal Aid Bridge Projects

- Twenty (20) active projects have been identified with approximately \$139 million in federal dollars expected to be obligated. New bridge projects will continue to be added on an annual basis.

Exempt from Guideshare Federal Aid Interstate & Corridor Improvement Projects

- Ten (10) active projects have been identified with approximately \$1.2 billion in federal dollars expected to be obligated. New interstate & corridor improvement projects will continue to be added on an annual basis.

Transit Program

- Section 5310 – Enhance Mobility for Seniors & Disabled – Approximately \$801,000 investment in thirteen (13) projects.
- Section 5311 – Rural Transportation Formula Funds – Approximately \$4.2 million investment in four (4) projects.
- Section 5339 – Bus and Bus Facilities – Approximately \$341,000 investment in two (2) projects.

MOTION, approved

John McMeekin for approval, seconded by Clarence Gilbert to adopt the *FY 2023 – 2033 CMCOG Rural Transportation Improvement Program (RTIP). The motion was approved.

C5. *2024 & 2025 UPWP Amendment – Intersection Control Evaluation Process

Reginald Simmons requested approval to amend the 2024 & 2025 UPWP to add \$250,000 for the Intersection Control Evaluation Process. CMCOG in partnership with SCDOT, its member governments, and the COMET will implement an Intersection Control Evaluation Process. This will be a data-driven, performance-based framework and approach used to objectively screen alternatives and identify an optimal geometric and control solution for an intersection. The benefits to using this approach include:

- Implementation of safer, more balanced, and more cost-effective solutions.
- Consistent documentation that improves the transparency of transportation decisions.
- Increased awareness of innovative intersection solutions and emphasis on objective performance metrics for consistent comparisons.
- The opportunity to consolidate and streamline existing intersection-related policies and procedures, including access or encroachment approvals, new traffic signal requests, and impact studies for development.

The Intersection Control Evaluation Process will be a four step process to assess each intersection. It will include the following:

- **Scoping Analysis.** The analysis will be sufficient to estimate a preliminary footprint of each intersection alternative to determine whether it is practical to pursue.
- **Safety Analysis.** The safety analysis will provide a basis to characterize safety performance of the possible alternatives.
- **Operational Analysis.** The primary goal of the operational analysis in the scoping phase is to determine if the intersection alternative will perform at an acceptable quality of service. Appropriate traffic control device warrant analyses may be conducted.

Multimodal Considerations. The suitability of each alternative for pedestrians and bicyclists should be assessed with an emphasis on convenience and accessibility and consideration of pedestrian and bicyclist network information from local and community plans. Potential items to consider include

the number of lanes to cross, protected versus permitted turning movements, and motorist approach speeds. Additionally, the multimodal assessment should consider the suitability of each alternative for transit, freight, and other large vehicle operations when applicable.

MOTION, approved

Darrell Hudson moved for approval, seconded by John McMeekin to amend the *2024 & 2025 UPWP to add \$250,000 for the Intersection Control Evaluation Process. The motion was approved.

C6. 2024 & 2025 RPWP Amendment – Intersection Control Evaluation Process

Reginald Simmons requested approval to amend the 2024 & 2025 RPWP to add \$10,000 for the Intersection Control Evaluation Process. CMCOG in partnership with SCDOT, its member governments, and the COMET will implement an Intersection Control Evaluation Process. This will be a data-driven, performance-based framework and approach used to objectively screen alternatives and identify an optimal geometric and control solution for an intersection. The benefits to using this approach include:

- Implementation of safer, more balanced, and more cost-effective solutions.
- Consistent documentation that improves the transparency of transportation decisions.
- Increased awareness of innovative intersection solutions and emphasis on objective performance metrics for consistent comparisons.
- The opportunity to consolidate and streamline existing intersection-related policies and procedures, including access or encroachment approvals, new traffic signal requests, and impact studies for development.

The Intersection Control Evaluation Process will be a four step process to assess each intersection. It will include the following:

- Scoping Analysis. The analysis will be sufficient to estimate a preliminary footprint of each intersection alternative to determine whether it is practical to pursue.
- Safety Analysis. The safety analysis will provide a basis to characterize safety performance of the possible alternatives.
- Operational Analysis. The primary goal of the operational analysis in the scoping phase is to determine if the intersection alternative will perform at an acceptable quality of service. Appropriate traffic control device warrant analyses may be conducted.
- Multimodal Considerations. The suitability of each alternative for pedestrians and bicyclists should be assessed with an emphasis on convenience and accessibility and consideration of pedestrian and bicyclist network information from local and community plans. Potential items to consider include the number of lanes to cross, protected versus permitted turning movements, and motorist approach speeds. Additionally, the multimodal assessment should consider the suitability of each alternative for transit, freight, and other large vehicle operations when applicable.

MOTION, approved

Walton McLeod moved for approval, seconded by Darrell Hudson to amend the 2024 & 2025 RPWP to add \$10,000 for the Intersection Control Evaluation Process. The motion was approved.

C7. Area Agency on Aging Office Space Lease Agreement

Britt Poole gave presentation regarding the Area Agency on Aging Office Space Lease Agreement. Mr. Poole stated that lease was settled at \$16.75 per square foot. Existing AAA grants will cover the lease rental, movers and some capital maintenance. He also stated that taxes could possibly be around \$15K annually.

A brief discussion took place.

MOTION, *approved*

Foster Senn moved for approval, seconded by Darrell Hudson to approve the Area Agency on Aging Office Space Lease Agreement and authorize the Executive Director to make changes or negotiations regarding the lease agreement. The motion was approved.

D. Announcements / Committee or Staff Reports / Correspondences

D1. 208 Plan Update

Gregory Sprouse gave a presentation on the 208 Plan Update. Water Quality Management Plan amendments will be underway in February 2024.

A brief discussion took place.

This was for information only and no action was taken.

E. OLD / NEW BUSINESS

None.

F. OTHER BUSINESS

None.

G. Adjourn

There being no further business, the meeting adjourned at 11:36 a.m.

Britt Poole, Secretary-Treasurer

Will Brennan, Chairman



CMCOG Meeting Notice

Thursday, February 22, 2024 ♦ 12:00 P.M.

Midlands Technical College – Harbison Campus (in person)

7300 College Street, Irmo, SC 29063

Continuing Education Center, Room 113 and Zoom Meeting (Virtual)

<https://us02web.zoom.us/j/89576358709?pwd=N1F6WDJZYm1qVnYyMDdpUGFjMldndz09>

Meeting ID: 895 7635 8709 ♦ Passcode: 536808 ♦ Dial-In Number (929) 205-6099

DATE: February 15, 2024

TO: CMCOG Board of Directors

FROM: Will Brennan, CMCOG Board Chair

SUBJECT: CMCOG Board Meeting – February 22, 2024 at 12:00 P.M.

Please be advised that the next meeting of the Central Midlands Council of Governments Board of Directors will be held on **Thursday, February 22, 2024 at Midlands Technical College Harbison Campus, Continuing Education Center, Room 113. See attached map of the campus for additional information.**

The meeting will start promptly at 12:00 P.M., so please arrive on time. We need a quorum to conduct business, so it is very important for you to plan to attend each meeting. The meeting packet has been mailed and emailed to you.

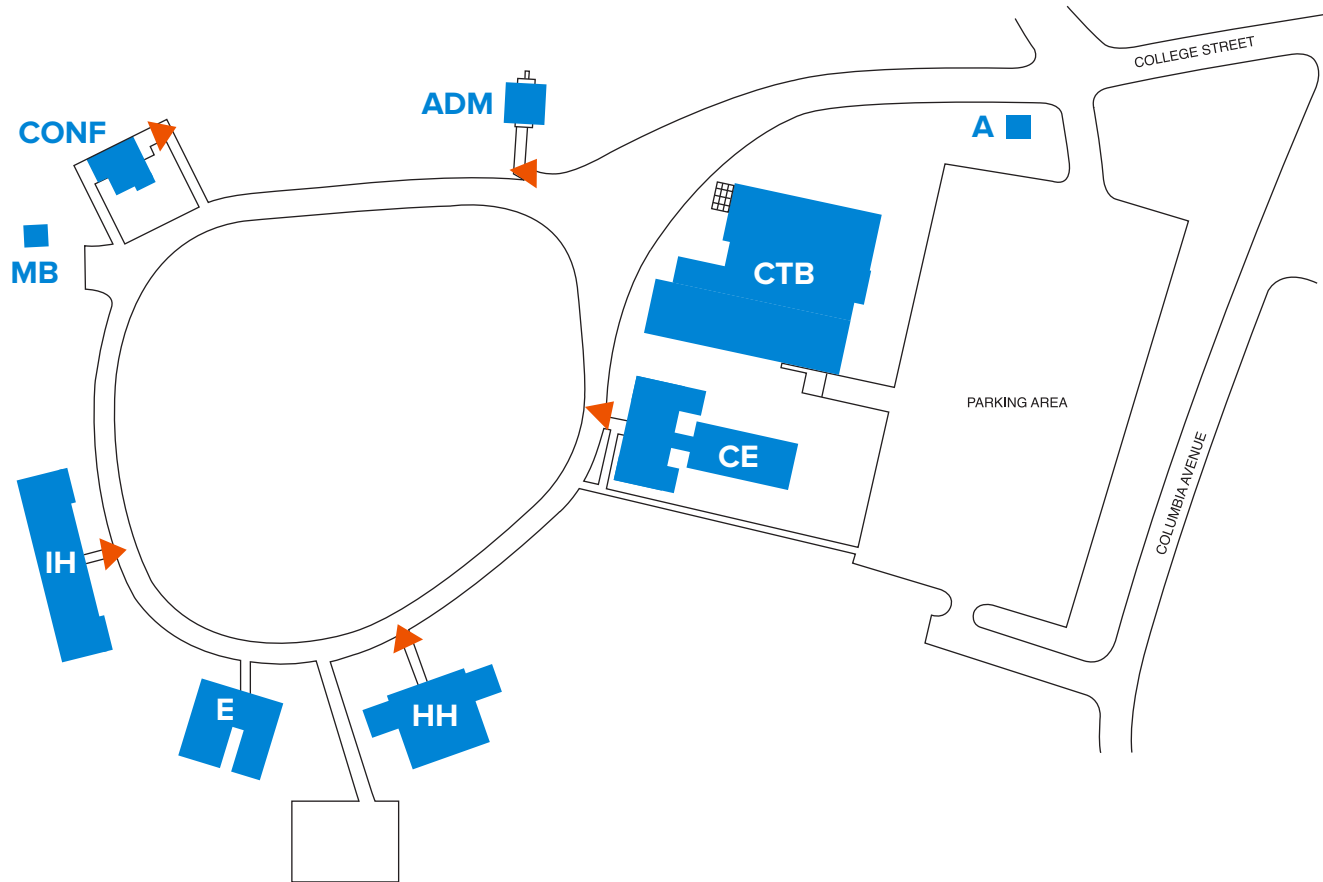
I thank you for your time and service to the Central Midlands Council of Governments.

Enclosures

BUILDING LOCATION MAP HARBISON CAMPUS



7300 College Street
Irmo, SC 29063



Building Legend Harbison Campus

- A - Guard Station
 - ADM - Administration
 - CONF - Conference Center
 - IH - Irmo Hall
 - E - Storage
 - HH - Harbison Hall
 - CE - Continuing Education Center
 - MB - Maintenance Building
 - CTB - Classroom and Theatre Building
- ▲ Curb access ramps for students with disabilities



Board of Directors' Meeting

Thursday, February 22, 2024 ♦ 12:00 p.m.

Midlands Technical College – Harbison Campus (in person)

7300 College Street, Irmo, SC 29063

Continuing Education Center, Room 113 and Zoom Meeting (Virtual)

<https://us02web.zoom.us/j/89576358709?pwd=N1F6WDJZYm1qVnYyMDdpUGFjMldndz09>

Meeting ID: 895 7635 8709 ♦ Passcode: 536808 ♦ Dial-In Number (929) 205-6099

OVERALL AGENDA

ACTION	A. <u>Call to Order and Introductions</u>	Will Brennan, Chair
	1. Determination of a Quorum	
	2. Approve Order and Contents of the Overall Agenda	
	3. Invocation	
	4. Introduction of New Board Members & Guests	
	5. Chairman's Introduction	Will Brennan
	Good News from CMCOG – Around the Region	Will Brennan
	B. <u>Consent Agenda</u>	
	1. Approval of the January 25, 2024 Board Meeting Minutes (<i>Enclosure 1</i>)	
	2. *FY 2023 – 2033 COATS MPO Transportation Improvement Program (TIP) (<i>Enclosure 2</i>)	
3. FY 2023 – 2033 CMCOG RPO Transportation Improvement Program (RTIP) (<i>Enclosure 3</i>)		
4. 2045 LRTP Amendment – Regional Transportation Operations (<i>Enclosure 4</i>)		
5. *2020 – 2027 TIP Amendment – Columbia Traffic Signals Study (<i>Enclosure 5</i>)		
C. <u>Regular Agenda</u>		
1. Monthly Financial Status Report (December 2023) (<i>Enclosure 6</i>)	Melissa Labbe	
2. 208 Plan Amendment: Richland County-Eastover WWTP Expansion (<i>Enclosure 7</i>)	Gregory Sprouse	
D. <u>Announcements / Committee or Staff Reports / Correspondences</u>		
1. Transportation Project Updates	Darren Ledbetter	
2. Southeast Crescent Regional Commission	Rocky Simmons	
3. CMCOG Committee Reports	Britt Poole	
4. Executive Director's Report	Britt Poole	
E. <u>Old/New Business</u>		
F. <u>Other Business</u>		
G. <u>Adjourn</u>		
INFORMATION	REMINDER: The next CMCOG Board Meeting will be held on Thursday, March 28, 2024	
	Note: Full Agenda packets can be found on the CMCOG website at www.cmco.org.	

*Denotes item is a Metropolitan Planning Organization (MPO) Urbanized Area Request



**Board of Directors Meeting of the
Central Midlands Council of Governments**

**Thursday, January 25, 2024 ♦ 12:00 p.m. ♦ Midlands Technical College
Harbison Campus – 7300 College Street, Irmo, SC 29063**

Continuing Education Center, Room 113 and Zoom Meeting (Virtual)

Meeting ID: 841 9912 4491 ♦ Passcode: 317208 ♦ Dial-In Number (929) 205-6099

BOARD MEMBERS PRESENT:

David Bouknight, Batesburg-Leesville
Will Brennan, CHAIR, Columbia City Council
Greg Brewer, Lexington County
Paul Lawrence “Larry” Brigham, Jr., Lexington County Council
Kimberly Brown, Richland County Council
Peter Brown, Columbia City Council
David Busby, Town of Pine Ridge
John Carrigg, Lexington County
Brian Carter, City of West Columbia
Vivian Clark, City of Columbia
Kyle Crager, Fairfield County
Rebecca Connally, Lexington County
Glen Conwell, Lexington County Council
Todd Cullum, Lexington County Council
William “Bill” Danielson, Town of Irmo
Bill Dukes, SCDOT Commissioner
Clyde “Chuck” Fallaw, III, Richland County Council
Clarence Gilbert, Fairfield County Council
T. Wayne Gilbert, Richland County
Darrell Hudson, Lexington County Council
Haskell Kibler, Forest Acres
Robert Liming, City of Columbia
Annie McDaniel, Vice-Chair, Fairfield County Del.
Walton McLeod, Newberry County
John McMeekin, Mayor, Town of Winnsboro
Joe Mergo, Lexington County
Stephanie O’Cain, Richland County
Maurice Pearl, The Comet, CMRTA
Foster Senn, Mayor, City of Newberry
Nick Shealy, Newberry County Council
Lynn Sturkie, Lexington County

GUESTS PRESENT:

Courtney Dennis, Town of Irmo
Will Dillard, Belser Law Firm
Jana Jayroe, Mayor, Little Mountain
Jim Walden, SCDOT
Joey McIntyre, SCDOT
Michelle Ransom, The Comet
Brent Rewis, SCDOT
Tracy Hegler
Al Koon, Mayor, Town of Chapin
Joey Riddle, AECOM
Brett McCutcheon

STAFF MEMBERS PRESENT:

Fretoria Addison, LTC Ombudsman Volunteer Coordinator/Information Support Specialist
Roland Bart, Senior Planner
Tammy Beagan, Director, Workforce
Shelia Bell-Ford, AAA Assistant Director
Aleigha Chee-you, Ombudsman Program Assistant
Jory Fleming, CPR Grant Manager
Anna Harmon, AAA Director
Jason Kent, GIS Manager
Missi Labbe, Finance Director
Britt Poole, Executive Director
Kelly Roberson, Executive Clerk to Boards
Reginald Simmons, Deputy Executive Director/Transportation Director
Gregory Sprouse, Director, Planning, Research & Development
Lilnora White, HR Manager

A1. CALL TO ORDER

Chairman Will Brennan called the meeting to order at 12:00 p.m. on January 25, 2024.

A2. Approve Order and Contents of the Overall Agenda

Chairman Brennan stated that a quorum was present.

MOTION, approved

Clarence Gilbert moved for approval, seconded by Walton McLeod to approve the Order and Contents of the Overall Agenda. The motion was approved.

A3. Invocation

The invocation was given by John McMeekin.

***There was a moment of silence before the invocation for Mr. George “Smokey” Davis, a long serving respected board member, who passed away on January 24, 2024.**

A4. Introduction of New Board Members & Guests

Chairman Brennan welcomed and introduced our guests for today’s meeting. He also introduced new board members.

A5. Chairman’s Introduction

Good News from CMCOG – Around the Region

- The Midlands celebrated MLK day with parade in Newberry and other celebrations around the midlands. CMCOG was closed on January 15th in honor of MLK day.
- The Lourie Center hosted an Open House on January 25, 2024.
- Fairfield County hosted an Oyster Roast Fundraiser and Benefit for Fairfield County Council on Aging and Meals on Wheels on January 27, 2024. Tickets were available at fairfieldcoa.org and were on sale through January 19th.
- Lexington County EMS “Stuff-An-Ambulance” was a huge success. They donated 478.6 pounds of food to Mission Lexington.
- Newberry County’s Jordan’s Way Live fundraiser, collected over \$11,000 for Newberry County Shelter Animals.
- Richland County Neighborhood Improvement Program presented the Neighborhood Enrichment Grant Program Training Sessions. The sessions were scheduled for Nov. 15th, Dec. 7th, Jan. 4th, and Jan. 18th. The training was held at the Richland County Administration building in the 4th floor Conference room. All eligible groups and participants were encouraged to apply.
- The Town of Winnsboro will restore its burned-out Thespian Hall Tavern.

- Christy Hall, SCDOT's Secretary of Transportation, announced retirement this spring. CMCOG wishes to congratulate Secretary's Hall retirement and a job well done.

B. CONSENT AGENDA

- B1. Approval of the December 14, 2023 Board Meeting Minutes.
- B2. 2045 LRTP Amendment – 2020 – 2024 Safety Performance Measures

MOTION, approved

Clarence Gilbert moved for approval, seconded by Vivian Clark to approve Consent Agenda. The motion was approved.

C. REGULAR AGENDA

C1. Monthly Financial Status Report (November 2023)

Missi Labbi gave presentation regarding the Monthly Financial Status Report (November 2023).

A brief discussion took place after the presentation.

MOTION, approved

Robert Liming moved for approval of the Monthly Financial Status Report (November 2023). The motion was seconded by Darrell Hudson. The motion was approved, however, Chairman Brennan stated this would be taken as information only.

C2. FY 2023 - 2024 CMCOG Budget Adjustment

Missi Labbi, Finance Director and Britt Poole, Executive Director gave presentation regarding the FY 2023 – 2024 CMCOG Budget Adjustment. It was noted that most of the changes are due to increases in personnel for the Aging, Transportation, and Planning Departments. These changes provide CMCOG the opportunity to access untapped funds that were available to these programs.

A brief discussion took place.

MOTION, approved

Robert Liming moved for approval, seconded by Nick Shealy to approve the FY 2023 – 2024 CMCOG Budget Adjustment. The motion was approved.

C3. *FY 2023 – 2033 COATS MPO Transportation Improvement Program (TIP)

Reginald Simmons requested approval to adopt the 2023 – 2033 COATS MPO Transportation Improvement Program (TIP). Per federal guidance, every 4 years in coordination with SCDOT, CMRTA, and other agencies, the COATS MPO reviews and updates its Transportation Improvement Program. This program serves as the short range capital improvements program for funding and implementation of roadway, transit, and non-motorized transportation improvements projects. Included in the TIP are several major categories which include the guideshare projects, intersection improvements, project exempt from

guideshare, transportation alternatives, and transit. Mr. Simmons referred to a handout which included the following:

Guideshare Program

- Approximately \$300 million is expected to be obligated through FY 2033 on road widenings, intersection improvements, planning feasibility studies, interchange improvements, and enhancement projects.

Enhancements Program

- Twelve (12) active projects have been identified with approximately \$4.8 million in federal dollars expected to be obligated through FY 2033. New enhancement projects will continue to be added on an annual basis.

Transit Program

- Section 5307 – Large Urban Funds – Approximately \$13 million has been programmed in previous years
- Section 5307 – Large Urban Funds – Approximately \$14 million has been programmed in CARES Act Funding
- Section 5307 – Large Urban Funds – Approximately \$8 million has been programmed in ARP Funding
- Section 5310 – Enhanced Mobility – Approximately \$2.8 million has been programmed
- Section 5339 – Bus and Bus Facilities – Approximately \$5.2 million has been programmed in previous years
- New transit projects will continue to be added on an annual basis.

Federal Appropriations

- Four (4) active projects have been identified with approximately \$15.1 million federal dollars expected to be obligated. New projects will continue to be added on an annual basis.

Recreational Trails

- Seven (7) active projects have been identified with approximately \$2 million in federal dollars expected to be obligated through FY 2033. New projects will continue to be added on an annual basis.

Exempt from Guideshare Federal Aid Bridge Projects

- Twenty-Three (23) active projects have been identified with approximately \$370 million in federal dollars expected to be obligated. New bridge projects will continue to be added on an annual basis.

Exempt from Guideshare Federal Aid Intersection & Safety Projects

- Nineteen (19) active projects have been identified with approximately \$48 million in federal dollars expected to be obligated. New intersection and safety projects will continue to be added on an annual basis.

Exempt from Guideshare Federal Aid Interstate & Corridor Improvement Projects

- Nineteen (19) active projects have been identified with approximately \$3.7 billion in federal dollars expected to be obligated. New interstate & corridor improvement projects will continue to be added on an annual basis.

MOTION, approved

John McMeekin moved for approval, seconded by Todd Cullum to adopt the *FY 2023 – 2033 COATS MPO Transportation Improvement Program (TIP). The motion was approved.

C4. *FY 2023 – 2033 CMCOG RPO Transportation Improvement Program (RTIP)

Reginald Simmons requested approval to adopt the 2023 – 2033 CMCOG Rural Transportation Improvement Program (RTIP). Per federal guidance, every 4 years in coordination with SCDOT, CMRTA, and other agencies, the CMCOG reviews and updates its Transportation Improvement Program. This program serves as the short range capital improvements program for funding and implementation of roadway, transit, and non-motorized transportation improvements projects. Included in the TIP are several major categories which include the guideshare projects, intersection improvements, project exempt from guideshare, bridges, interstate & corridor improvements, and transit. Mr. Simmons referred to a handout which included the following:

Guideshare Program

- Approximately \$55 million is expected to be obligated through FY 2033 on road widenings, resurfacings, intersection improvements, planning feasibility studies, interchange improvements, and signal system improvement projects.

Exempt from Guideshare Federal Aid Bridge Projects

- Twenty (20) active projects have been identified with approximately \$139 million in federal dollars expected to be obligated. New bridge projects will continue to be added on an annual basis.

Exempt from Guideshare Federal Aid Interstate & Corridor Improvement Projects

- Ten (10) active projects have been identified with approximately \$1.2 billion in federal dollars expected to be obligated. New interstate & corridor improvement projects will continue to be added on an annual basis.

Transit Program

- Section 5310 – Enhance Mobility for Seniors & Disabled – Approximately \$801,000 investment in thirteen (13) projects.
- Section 5311 – Rural Transportation Formula Funds – Approximately \$4.2 million investment in four (4) projects.
- Section 5339 – Bus and Bus Facilities – Approximately \$341,000 investment in two (2) projects.

MOTION, *approved*

Walton McLeod for approval, seconded by John McMeekin to adopt the *FY 2023 – 2033 CMCOG Rural Transportation Improvement Program (RTIP). The motion was approved.

C5. *2024 & 2025 UPWP Amendment – Intersection Control Evaluation Process

Reginald Simmons requested approval to amend the 2024 & 2025 UPWP to add \$250,000 for the Intersection Control Evaluation Process. CMCOG in partnership with SCDOT, its member governments, and the COMET will implement an Intersection Control Evaluation Process. This will be a data-driven, performance-based framework and approach used to objectively screen alternatives and identify an optimal geometric and control solution for an intersection. The benefits to using this approach include:

- Implementation of safer, more balanced, and more cost-effective solutions.
- Consistent documentation that improves the transparency of transportation decisions.
- Increased awareness of innovative intersection solutions and emphasis on objective performance metrics for consistent comparisons.
- The opportunity to consolidate and streamline existing intersection-related policies and procedures, including access or encroachment approvals, new traffic signal requests, and impact studies for development.

The Intersection Control Evaluation Process will be a four step process to assess each intersection. It will include the following:

- **Scoping Analysis.** The analysis will be sufficient to estimate a preliminary footprint of each intersection alternative to determine whether it is practical to pursue.
- **Safety Analysis.** The safety analysis will provide a basis to characterize safety performance of the possible alternatives.
- **Operational Analysis.** The primary goal of the operational analysis in the scoping phase is to determine if the intersection alternative will perform at an acceptable quality of service. Appropriate traffic control device warrant analyses may be conducted.
- **Multimodal Considerations.** The suitability of each alternative for pedestrians and bicyclists should be assessed with an emphasis on convenience and accessibility and consideration of pedestrian and bicyclist network information from local and community plans. Potential items to consider include the number of lanes to cross, protected versus permitted turning movements, and motorist approach speeds. Additionally, the multimodal assessment should consider the suitability of each alternative for transit, freight, and other large vehicle operations when applicable.

MOTION, approved

Brian Carter moved for approval, seconded by Clarence Gilbert to amend the *2024 & 2025 UPWP to add \$250,000 for the Intersection Control Evaluation Process. The motion was approved.

C6. 2024 & 2025 RPWP Amendment – Intersection Control Evaluation Process

Reginald Simmons requested approval to amend the 2024 & 2025 RPWP to add \$10,000 for the Intersection Control Evaluation Process. CMCOG in partnership with SCDOT, its member governments, and the COMET will implement an Intersection Control Evaluation Process. This will be a data-driven, performance-based framework and approach used to objectively screen alternatives and identify an optimal geometric and control solution for an intersection. The benefits to using this approach include:

- Implementation of safer, more balanced, and more cost-effective solutions.
- Consistent documentation that improves the transparency of transportation decisions.
- Increased awareness of innovative intersection solutions and emphasis on objective performance metrics for consistent comparisons.
- The opportunity to consolidate and streamline existing intersection-related policies and procedures, including access or encroachment approvals, new traffic signal requests, and impact studies for development.

The Intersection Control Evaluation Process will be a four step process to assess each intersection. It will include the following:

- Scoping Analysis. The analysis will be sufficient to estimate a preliminary footprint of each intersection alternative to determine whether it is practical to pursue.
- Safety Analysis. The safety analysis will provide a basis to characterize safety performance of the possible alternatives.
- Operational Analysis. The primary goal of the operational analysis in the scoping phase is to determine if the intersection alternative will perform at an acceptable quality of service. Appropriate traffic control device warrant analyses may be conducted.
- Multimodal Considerations. The suitability of each alternative for pedestrians and bicyclists should be assessed with an emphasis on convenience and accessibility and consideration of pedestrian and bicyclist network information from local and community plans. Potential items to consider include the number of lanes to cross, protected versus permitted turning movements, and motorist approach speeds. Additionally, the multimodal assessment should consider the suitability of each alternative for transit, freight, and other large vehicle operations when applicable.

MOTION, approved

Foster Senn moved for approval, seconded by John McMeekin to amend the 2024 & 2025 RPWP to add \$10,000 for the Intersection Control Evaluation Process. The motion was approved.

C7. Area Agency on Aging Office Space Lease Agreement

Britt Poole gave presentation regarding the Area Agency on Aging Office Space Lease Agreement. Mr. Poole stated that lease was settled at \$16.75 per square feet. Existing AAA grants will cover the lease rental, movers and some capital maintenance. He also stated that taxes could possibly be around \$15K annually.

A brief discussion took place.

MOTION, *approved*

Haskell Kibler moved for approval, seconded by Darrell Hudson to approve the Area Agency on Aging Office Space Lease Agreement and authorize the Executive Director to make changes or negotiations regarding the lease agreement. The motion was approved.

D. Announcements / Committee or Staff Reports / Correspondences

D1. EPA Climate Pollution Reduction Grant

Jory Fleming gave a presentation on the EPA Climate Pollution Reduction Grant. Mr. Fleming discuss the purpose for this project and how projects could be submitted for consideration. He noted the short time line for submitting project and discuss the initial strategy that was being developed.

A brief discussion took place.

This was information only. No action was taken on this item.

D2. CMCOG Committee Reports

- Gregory Sprouse gave update regarding the Central Midlands Development Corporation and EPAC committee.
- Reginald Simmons gave update regarding the Transportation Subcommittee and Rural Committee.
- Darrell Hudson gave an update on the RADAC Committee. Mr. Hudson is the Chairman of this committee and Foster Senn is the Vice-Chairman. This committee meets quarterly.
- Tammy Beagan gave some updates regarding the Midlands Workforce Board.

D3. Executive Director's Report

Britt Poole gave the following report:

- Mr. Poole thanked everyone who could attend today whether by Zoom or in person. Their presence was appreciated. It is a great value to the COG to bring the region together and that only works with support and participation

Area Agency on Aging

- On January 18th, the Central Midlands Area Agency on Aging held “The Big Event” at Brookland Baptist Conference Center. We had a great turnout and the Aging Department was able to educate all in attendance about our programs and offerings. The Keynote was given by Ms. Zenethia Brown, Executive Director of the National Alliance on Mental Illness. She spoke about seniors and mental health. We continue to schedule education events all over the region.

- The Board was sent a copy of the January Aging Newsletter. I encourage you to take a look when you have a minute.
- We had a facility closure last quarter due to the owner retiring. The Long-Term Care Ombudsman was able to advocate for the residents and get all residents moved to other facilities.
- It is that time of year for CMCOG to start the RFP process for aging services. The proposals are due by March 4. The selected service provider contracts will begin July 1, 2024.

Research, Planning, and Development

- CMCOG just hired an intern under the CPR grant. Joana Arauz is an Environmental Engineering student at Benedict College. Her academic/research interests include a focus on the intersection between environmental science, public policy, and community engagement. Joana is also a Harvard Public Policy Scholar. In her internship role at CMCOG will be assisting Jory and Gregory with the EPA Climate Pollution Reduction Grant and working on other ongoing environmental planning projects.
- CMCOG is a sponsor of and participant in the 2024 Congaree Research Symposium. The event will be held on February 1 at the USC Alumni Center.

Transportation

- In a recent board email, the Board was sent a webinar about the RAISE grant that was discussed at the last meeting. The date has passed for the live program but there are links to recorded presentations.

Workforce

- Last month it was discussed how our Workforce Department was helping with the Tyson Food's plant closing in Columbia. They completed the process on January 8 with a meeting with employees to help with unemployment insurance filings for those who haven't found work yet.
- In January a collaboration was made with Midlands Stem Institute in Winnsboro for WIOA-sponsored welding training at MTC with VR training in OSHA safety, tool and uniform distribution.
- SC Works staff volunteered at Cayce Elementary School's Sole Stepping distributing 1000 pairs of shoes.
- There was work with White Knoll Middle School's Leadership class of 7th & 8th graders conducting a resume and professional behavior workshop.
- Launched the Career Exploration Workshop series at Midlands Middle College on January 16th & Lexington One's Adult Education Center on January 23rd.

Announcements

- Mr. Poole will be speaking at The Greater Lexington Chamber on February 6th about what the COG is and the great things we do to help the midlands. If you would like a presentation to a civic group, jurisdiction, or organization we would be happy to work with you on scheduling it, just reach out.
- CMCOG offices will be closed on February 19th for Presidents Day.
- Central Midlands Board of Directors will meet next on February 22nd.

E. OLD / NEW BUSINESS

E1. None

F. OTHER BUSINESS

Next Meeting is scheduled for February 22, 2024.

G. Adjourn

There being no further business, the meeting adjourned at 1:10 pm.

Britt Poole, Secretary-Treasurer

Will Brennan, Chairman



DATE: January 18, 2024
TO: CMCOG Board of Directors
FROM: Reginald Simmons, Deputy Executive Director/Transportation Director
SUBJECT: 2023 - 2033 Transportation Improvement Program ([Available for downloading at www.centralmidlands.org](http://www.centralmidlands.org))

REQUESTED ACTION

The Central Midlands Council of Governments' staff requests approval to adopt the 2023 - 2033 Transportation Improvement Program.

PROJECT DESCRIPTION

The Central Midlands Council of Governments staff is requesting your review and approval of the 2023 - 2033 Transportation Improvement Program. This program is fiscally constrained and is expected to obligate over \$304 million in federal and state highway funds over the specified timeframe. The following is an overview of the program.

Guideshare Program

- Approximately \$304 million is expected to be obligated through FY 2033.
 - \$7.8 million investment in Leesburg Road @ Patricia Drive
 - \$225,000 investment in Intersection Improvement projects
 - \$1.4 million investment in Planning Feasibility Studies
 - \$10 million investment in Lower Saluda Greenway
 - \$3 million investment in Assembly Street Phase II
 - \$93 million investment in Hardscrabble Road
 - \$45 million investment in Columbia Avenue
 - \$6 million investment in South Main Street
 - \$60 million investment in Leesburg Road
 - \$56 million investment in Exit 119

Enhancements Program

- Twelve (12) active projects have been identified.
- Over \$4.8 million in federal dollars have been obligated.
- New enhancement projects will continue to be added on an annual basis.

Transit Program

- Section 5307 – Large Urban Funds – Approximately \$13 million has been programmed in previous years
- Section 5307 – Large Urban Funds – Approximately \$14 million has been programmed in CARES Act Funding
- Section 5307 – Large Urban Funds – Approximately \$8 million has been programmed in ARP Funding
- Section 5310 – Enhanced Mobility – Approximately \$2.8 million has been programmed
- Section 5339 – Bus and Bus Facilities – Approximately \$5.2 million has been programmed in previous years
- New transit projects will continue to be added on an annual basis.

Federal Appropriations

- Approximately \$15.1 million is expected to be obligated through FY 2033.
 - \$2.4 million investment in I-26 Saluda River Crossing
 - \$2.1million investment in Harden Street Phase II
 - \$500,000 investment in Harden Street Reconfiguration
 - \$10 million investment in the Seamless City Revitalization Project

Recreational Trails

- Approximately \$2 million is expected to be obligated through FY 2033.
 - \$100,000 investment in the Saluda River Pedestrian Bridge Project
 - \$100,00 investment in the Saluda River & Riverwalk Access Improvement
 - \$1.5 million investment in the Lower Saluda Greenway
 - \$95,900 investment in the Owens Field Park Pump Track
 - \$77,000 investment in Riverwalk Phase IV
 - \$77,000 investment in the Lower Saluda River Blue Trail
 - \$99,000 investment in the Taylor Street Trail

Exempt from Guideshare Federal Aid Bridge Projects

- Twenty-Three (23) active projects have been identified.
- Over \$370 million in federal dollars have been obligated.
- New bridge projects will continue to be added on an annual basis.

Exempt from Guideshare Federal Aid Intersection & Safety Projects

- Nineteen (19) active projects have been identified.
- Over \$48 million in federal dollars have been obligated.
- New intersection and safety projects will continue to be added on an annual basis.

Exempt from Guideshare Federal Aid Interstate & Corridor Improvement Projects

- Nineteen (19) active projects have been identified.
- Over \$3.7 billion in federal dollars have been obligated.
- New interstate & corridor improvement projects will continue to be added on an annual basis.

BACKGROUND

The Transportation Improvement Program is a federally mandated document designed to program federal funds. The TIP provides a fiscally constrained list of highway, enhancement, and transit projects that have been identified for funding by the MPO Policy Committee. Historically, the South Carolina Department of Transportation (SCDOT) has developed and maintained a local TIP for COATS MPO projects. COATS now maintains its own TIP which will enable the CMCOG staff to monitor and track federally funded projects in the urbanized study area of the CMCOG region. Projects approved in the TIP will be incorporated into SCDOT's STIP.



Memorandum

TO: All Members of the CMCOG **Board of Directors**

FROM: Reginald Simmons, Deputy Executive Director/Transportation Director

DATE: January 18, 2024

SUBJECT: 2023 - 2033 Rural Transportation Improvement Program *(Full document available for download)*

REQUESTED ACTION

The Central Midlands Council of Governments' staff requests approval to adopt the 2023 - 2033 Rural Transportation Improvement Program. Please be advised that the draft final report is available on our website for your review.

PROJECT DESCRIPTION

The Central Midlands Council of Governments staff is requesting your review and approval of the 2023 - 2033 Rural Transportation Improvement Program. This program is fiscally constrained and is expected to obligate over \$55 million in federal and state highway funds over the specified timeframe. The following is an overview of the program.

Guideshare Program

Approximately \$55 million is expected to be obligated through FY 2033.

- \$18.2 million investment in previous obligations to the US 1 Phases I Widening Project in Lexington County
- \$6.8 million investment in the Macedonia Church Road Resurfacing Project in Newberry County
- \$1.7 million investment in Exit 119 Interchange Improvement Project in Lexington County
- \$13.8 million investment in US 1 Phases II & III Widening Project in Lexington County
- \$8.3 million investment in the Longtown Road Resurfacing Project in Fairfield County
- \$1.2 million investment in Signal System Improvement Projects
- \$350,000 investment in Planning Corridor & Feasibility Studies
- \$150,000 investment in Intersection Improvement Projects

Exempt from Guideshare Federal Aid Bridge Projects

- Twenty (20) active projects have been identified.
- Over \$139 million in federal dollars have been obligated.
- New bridge projects will continue to be added on an annual basis.

Exempt from Guideshare Federal Aid Interstate & Corridor Improvement Projects

- Ten (10) active projects have been identified.
- Over \$1.2 billion in federal dollars have been obligated.
- New interstate & corridor improvement projects will continue to be added on an annual basis.

Transit Program

- Section 5310 – Enhance Mobility for Seniors & Disabled – Approximately \$801,000 investment in thirteen (13) projects.
- Section 5311 – Rural Transportation Formula Funds – Approximately \$4.2 million investment in four (4) projects.
- Section 5339 – Bus and Bus Facilities – Approximately \$341,000 investment in two (2) projects.

BACKGROUND

The Rural Transportation Improvement Program (RTIP) is a state mandated document designed to program federal funds. The RTIP provides a fiscally constrained list of highways, interstate, bridge, and transit project that have been identified for funding. Historically, the South Carolina Department of Transportation (SCDOT) has developed and maintained a local RTIP for CMCOG projects. CMCOG will now maintain its own RTIP which will enable the CMCOG staff to monitor and track federally funded projects in the rural study area of the CMCOG region. Projects approved in the RTIP will be incorporated into SCDOT's STIP.



Memorandum

TO: All Members of the CMCOG **Board of Directors**

FROM: Reginald Simmons, Deputy Executive Director/Transportation Director

DATE: December 7, 2023

SUBJECT: 2045 LRTP Amendment – COATS MPO Regional Transportation Operations and Technology Strategic Planning Program

REQUESTED ACTION

The Central Midlands Council of Governments' staff requests approval to amend the 2045 LRTP to add the COATS MPO Regional Transportation Operations and Technology Strategic Planning Program.

BACKGROUND

The purpose of the Regional Transportation Operations and Technology Strategic Planning Program is to guide the Central Midlands Council of Governments' efforts to deploy technology, tools and coordinated system procedures to manage the multimodal transportation system. Regional Transportation Operations and Technology is a set of tools and processes used by public and private operating agencies' staff to meet the day-to-day demands of the traveling public.

Transportation operations staff work to provide the best mobility services and facilities to people and businesses across the region every day. Rail and bus operators, maintenance crews, emergency responders, traffic management center staff, law enforcement personnel, Transportation District dispatchers, shared mobility providers and many others all work tirelessly to keep the transportation system operating safely and efficiently. Maintaining reliable operations also requires monitoring performance over time to improve service and to account for changes in transportation demand.

This approach examines existing challenges to transportation operations in the region and identifies a vision, goals and objectives for regional transportation operations and technology. Performance measures will be used to track progress. Several strategic initiatives are defined that will subsequently guide investments for the deployment of system operation projects. One of the first set of investments will be defined through the evaluation and implementation of the Carbon Reduction Program. The vision for the Regional Transportation Operations and Technology Strategic Planning is:

- Transportation systems serving all travel modes across the CMCOG area are interconnected, collaboratively operated, managed and maintained to optimize safe, reliable and efficient travel for all system users, contributing to the region's economic prosperity and high quality of life.

ATTACHMENT

- Goals for Regional Transportation Operations and Technology Strategic Planning
- Traffic Operations Prioritization Process
- Prioritized List of Traffic Signal Improvement Projects

Goals for Regional Transportation Operations and Technology Strategic Planning

Safe Operations

- Physical and technological improvements and intentional operations management deployed to both reduce crashes and achieve zero fatalities.

Efficient, Seamless Travel

- Interconnected systems across jurisdictions and modes are actively and cooperatively managed to optimize operator situational awareness, provide accurate and timely traveler information and allow collaborative transportation systems operation.

Travel Time Reliability

- Multimodal travel times are monitored in real-time and operations are managed to limit disruptions affecting travel time reliability.

Equitable Access

- People of all ages, abilities, languages, backgrounds, and incomes have access to safe and reliable mobility options.

Environmental Sustainability

- Apply technology, services and operations that reduce energy consumption, improve air quality and reduce greenhouse gas emissions.

Prioritization Process

The statewide signal ranking process is based on age of equipment, proximity of interstate, and AADT. The age of equipment and proximity of interstate information is obtained from the Traffic Signal Inventory Program, TEAMS. The AADT is obtained from ITMS. Points are given to each location based on the following criteria:

- Age of Controller (in years) = Age points
- Age of Cabinet (in years) = Age points
- Proximity of Interstate – If a location is at a ramp = 2 points, otherwise = 0 points
- AADT > 12,000 AADT = 2 points otherwise = 0 points

The life cycle of a signal is considered to be 15 years and any signal with more than 15 points is a candidate for a rebuild. Districts may choose signals that are not the highest ranking signals based on the following reasons:

- Specific knowledge of faulty or deteriorated signal equipment
- Signal requires more maintenance than normal
- If high ranking signal is part of an existing signal system, then adjacent signals may be included for improvements

High ranking signals may be bypassed based on the following criteria:

- Railroad, utility, or right of way issues are present that would add undue costs to the upgrade and require a lengthier project design
- A future project will impact the signal
- A resurfacing project will impact the signal
- The signal is a candidate for removal based on reductions in traffic volumes

TRAFFIC SIGNALS OPERATIONS PRIORITIZATION RANKINGS
COATS MPO

Maintained By	Custom Identifier	Primary Route	Secondary Route	Comment	Cabinets Average Age in Years	Controllers Average Age in Years	Support Poles by Type	Proximity to Interstate	AADT	Cabinet Points	Controller Points	Pole Points	Interstate Points	AADT Points	Total Points	COATS MPO Ranking
District1	TS1431	S-36 MP: 2.01	The Shoppes Mall	St. Andrews @ The Shoppes	25	26	0		23,300	25	26	0	0	2	53	1
District1	TS1434	S-36 MP: 3.817	S-757 MP: 0.689	St. Andrews Rd. @ Harbison Blvd./Emory Ln.	26	26	0		4,400	26	26	0	0	0	52	2
District1	TS1743	US1 MP: 12.544	Polo Rd	Two Notch Rd. @ Polo Rd	21	27	0		36,900	21	27	0	0	2	50	3
District1	TS1478	SC35 MP: 4.038	S-41 MP: 1.01	SC-35 12th St. @ S-41 Lafayette Ave.	24	21	0		13,500	24	21	0	0	2	47	4
District1	TS1375	S-104 MP: 3.224	S-168 MP: 4.325	Old Barnwell Rd @ Emanuel Church Rd	22	22	0		8,100	22	22	0	0	0	44	5
Columbia	118	Chestnut St	Barhamville Rd MP: 0.522		22	22	0		3,900	22	22	0	0	0	44	5
Columbia	RD 04	Rosewood Dr MP: 9.55	Assembly St	Fiber	22	19	0		16,400	22	19	0	0	2	43	6
District1	TS1271	US21 MP: 19.112	US176	Charleston Hwy. @ Airport Blvd. / Piggy Park	24	17	0		24,100	24	17	0	0	2	43	6
Columbia	KR 08	Kilbourne Rd MP: 3.281	Brennen Rd MP: 0.66		24	19	0		4,500	24	19	0	0	0	43	6
Columbia	TR 15	Trenholm Rd MP: 6.289	Whitaker Dr		22	18	0		14,400	22	18	0	0	2	42	7
Lexington	TS1231	US1 MP: 20.701	S-61 MP: 0.95	US-1 Main Street @ Harmon St.	27	13	0		29,000	27	13	0	0	2	42	7
Lexington	TS1229	US1 MP: 21.46	S-167 MP: 1.18	Augusta Hwy. @ Cedarcrest Dr./ Safe Federal Credit Union	25	15	0		29,000	25	15	0	0	2	42	7
District1	TS1290	US321 MP: 6.539	S-1073	US-321 Charleston Hwy. @ S-1073 Lewis Rast Rd.	21	18	0		13,400	21	18	0	0	2	41	8
Lexington	TS1471	US378 MP: 16.992	S-485	US-378 Sunset Blvd. @ Old Cherokee Rd. / Mallard lake Dr.	26	13	0		41,700	26	13	0	0	2	41	8
Lexington	TS1472	US378 MP: 16.549	Sunset Blvd MP: 16.549	US-378 Sunset Blvd. @ Wal-Mart	25	13	0		32,500	25	13	0	0	2	40	9
Columbia	BR 40	River Dr MP: 22.509	Sunset Dr MP: 0.019		25	15	0		6,200	25	15	0	0	0	40	9
Lexington	TS1466	US378 MP: 18.05	S-28 MP: 2.339	Sunset Blvd. @ Hope Ferry Rd./Tom Corley Rd.	24	14	0		41,700	24	14	0	0	2	40	9
District1	TS1789	S-27 MP: 0.728	S-1862 MP: 0.471	Woodrow St. @ N. Royal Tower Dr.	20	20	0		7,100	20	20	0	0	0	40	9
District1	TS1556	US76 MP: 7.918	US176 MP: 12.088002212524	Broad River Rd. @ Woodrow St.	17	21	0		16,200	17	21	0	0	2	40	9
Lexington	TS1474	US378 MP: 16.158	SC6 MP: 7.905	Sunset Blvd. @ North Lake Dr.	24	13	0		32,500	24	13	0	0	2	39	10
District1	TS1741	US1 MP: 11.128	Two Notch Rd MP: 11.128	Columbia Northeast Shopping Center	27	10	0		38,300	27	10	0	0	2	39	10
District1	TS1265	US76 MP: 1.721	S-83 MP: 0.1	Chapin Rd. @ Old Lexington Rd. RR	22	15	0		12,600	22	15	0	0	2	39	10
Columbia	BL 38	Beltline Blvd	Convenant Rd		18	19	0		14,900	18	19	0	0	2	39	10
District1	TS1318	US378 MP: 5.11	S-24 MP: 7.941	US-378 Columbia Ave. @ Priceville Rd. / Beulah Church Rd.	19	19	0		10,700	19	19	0	0	0	38	11
District1	TS1781	US21 MP: 16.16	Jenkins Brothers Rd MP: 1.181	Wilson Blvd. @ Jenkins Bros. Rd.	18	18	0		14,300	18	18	0	0	2	38	11
Columbia	328	Wayne St MP: 0.909	Whaley St MP: 0.891		26	10	0		19,400	26	10	0	0	2	38	11
District1	TS1438	S-36 MP: 4.923	St. Andrews Rd	St. Andrews Rd. @ Palmetto Woods Pkwy. /Lex. Medical Center	18	18	0		19,500	18	18	0	0	2	38	11
District1	TS1400	S-204 MP: 4.33	Pisgah Church Rd MP: 4.33	S-204 Pisgah Ch. Rd.@ S-604 Rawl Rd.	14	24	0		9,400	14	24	0	0	0	38	11
District1	TS1411	SC602 MP: 5.229	S-168 MP: 3.088	Platt Springs Rd. @ Emanuel Church Rd.	18	18	0		21,700	18	18	0	0	2	38	11
Columbia	CD 08	Farrow Rd MP: 1.25	Colonial Dr MP: 1.25		20	15	0		13,100	20	15	0	0	2	37	12
Lexington	TS1311	US378 MP: 15.429	S-121	378-Columbia Ave @ Berley Street	23	12	0		30,000	23	12	0	0	2	37	12
District1	TS1439	S-36 MP: 5.791	S-42 MP: 0.21	St Andrews Rd @ Thames Valley / Woodrow RR	17	20	0		12,000	17	20	0	0	0	37	12
District1	TS1409	SC602 MP: 7.419	S-71 MP: 2.09	Platt Springs Rd. @ Wattling Rd.	17	18	0		17,900	17	18	0	0	2	37	12
District1	TS1596	US76 MP: 2.04	S-234 MP: 0.001	Dutch Fork @ Lowman Home / Mt Vernon Church Rd.	18	18	0		1,200	18	18	0	0	0	36	13
District1	TS1673	SC60 MP: 0.1	Columbiana Dr MP: 1.038	Lake Murray Blvd @ Columbiana Dr.	24	10	0		24,600	24	10	0	0	2	36	13
District1	TS1573	S-52 MP: 3.783	Clemson Rd MP: 3.783	Clemson Rd @ Promenade Place [Sand Hills Village]	16	18	0		30,800	16	18	0	0	2	36	13
District1	TS1322	S-73 MP: 12.963	Fish Hatchery Rd MP: 12.963	Fish Hatchery Rd. @ Pine Ridge Complex Pine Ridge Town Hall	24	10	0		13,000	24	10	0	0	2	36	13
District1	TS1410	SC602 MP: 6.967	S-1508	Platt Springs Rd. @ Ermine Drive./John Hardee Expy.	17	17	0		17,900	17	17	0	0	2	36	13
District1	TS1244	US1 MP: 15.791	S-879	US-1 Augusta Hwy @ Old Farm Rd.	17	17	0		14,700	17	17	0	0	2	36	13
District1	TS1200	SC302 MP: 22.821	S-166 MP: 0.491	Airport Blvd. @ Glenn St.	8	25	0		12,100	8	25	0	0	2	35	14
District1	TS1266	US76 MP: 1.449	S-51 MP: 0.03	US-76 Chapin Rd. @ S-51 Amick's Ferry Rd. RR	22	11	0		13,400	22	11	0	0	2	35	14
District1	TS1927	US76 MP: 3.517	US521	Washington @ Hampton	23	12	0		7,600	23	12	0	0	0	35	14
District1	TS1403	SC602 MP: 9.661	S-804	Platt Springs Rd. @ Williams St./ Dreher	18	15	0		18,400	18	15	0	0	2	35	14
District1	TS1612	US321 MP: 6.897	I-20 MP: 69.697	Fairfield Rd. @ I-20 WB / Bowling Rd	31	0	0	I	14,900	31	0	0	2	2	35	14
Columbia	28	Bull St MP: 20.075	Calhoun St MP: 0.827		16	16	0		25,100	16	16	0	0	2	34	15
District1	TS1380	S-408 MP: 3.421	S-145 MP: 0.79	Old Cherokee Rd. @ Maxie Rd.	17	17	0		3,400	17	17	0	0	0	34	15
Lexington	TS1452	US378 MP: 23.466	East Hospital Dr	Sunset Blvd. @ East Hospital Dr. / Harbor Dr.	19	13	0		28,600	19	13	0	0	2	34	15
District1	TS1574	S-52 MP: 4.02	Clemson Rd MP: 4.02	Clemson Rd @ Market Place Common [Sand Hills Village]	16	16	0		30,800	16	16	0	0	2	34	15
District1	TS1203	SC302 MP: 21.744	I-26 MP: 113.067	Airport Blvd. @ I-26 East Bound Ramp	18	12	0	I	96,900	18	12	0	2	2	34	15
Columbia	BL 12	Sunset Dr MP: 1.179	SC277 Ramp MP: 1.097		17	15	0		21,900	17	15	0	0	2	34	15
District1	TS1642	US76 MP: 28.422	US378 MP: 8.9720008850098	Garners Ferry Rd @ Pineview Rd \ Hallbrook Dr	20	12	0		37,600	20	12	0	0	2	34	15

TRAFFIC SIGNALS OPERATIONS PRIORITIZATION RANKINGS
COATS MPO

Maintained By	Custom Identifier	Primary Route	Secondary Route	Comment	Cabinets Average Age in Years	Controllers Average Age in Years	Support Poles by Type	Proximity to Interstate	AADT	Cabinet Points	Controller Points	Pole Points	Interstate Points	AADT Points	Total Points	COATS MPO Ranking
District1	TS1388	S-70 MP: 3.89	S-244 MP: 4.125	Old Two Notch Rd. @ Old Orangeburg Rd	17	17	0		10,100	17	17	0	0	0	34	15
District1	TS1302	US1 MP: 3.118	SC245 MP: 2.979	US-1 Columbia Ave. @ SC-245 South Lee St.	17	17	0		9,700	17	17	0	0	0	34	15
Columbia	BL 22	Beltline Blvd	Grant St		22	9	0		22,200	22	9	0	0	2	33	16
Columbia	383	Sunset Dr MP: 1.378	West Ave		17	16	0		6,400	17	16	0	0	0	33	16
District1	TS1586	S-151 MP: 1.476	S-1677 MP: 1.35	Decker Blvd @ O'Neil Ct.	24	7	0		24,100	24	7	0	0	2	33	16
Lexington	TS1241	US1 MP: 18.579	S-77 MP: 20.234	US-1 W. Main St. @ S-77 Barr Rd.	21	10	0		19,400	21	10	0	0	2	33	16
District1	TS1272	US21 MP: 18.701	US176	Charleston Hwy. @ Glenn St.	8	25	0		10,700	8	25	0	0	0	33	16
Lexington	TS1469	US378 MP: 17.444	Whiteford Way MP: 1.482	US-378 Sunset Blvd. @ Whiteford Way / Lowes	18	13	0		41,700	18	13	0	0	2	33	16
Columbia	HA 09	Harden St MP: 0.229	Medical Park Rd		17	16	0		8,000	17	16	0	0	0	33	16
Columbia	MR 06	Monticello Rd MP: 0.632	Columbia College Dr		22	9	0		12,800	22	9	0	0	2	33	16
District1	TS1723	US1 MP: 6.384	S-218 MP: 1.76	US-1 Two Notch Rd. @ Fontaine Rd.	24	7	0		19,500	24	7	0	0	2	33	16
Columbia	82	Blanding St MP: 0.719	Barnwell St MP: 0.883		16	16	0		2,900	16	16	0	0	0	32	17
District1	TS1275	US21 MP: 16.622	US176	Charleston Hwy. @ Dixiana Rd.	19	11	0		22,000	19	11	0	0	2	32	17
District1	TS1204	SC302 MP: 21.479	S-1339	Airport Blvd @ Stratford Rd. / Branch Rd.	19	11	0		33,600	19	11	0	0	2	32	17
Columbia	55	Laurel St MP: 1.76	Gadsden St MP: 0.297		16	16	0		2,300	16	16	0	0	0	32	17
Columbia	61	Laurel St MP: 1.163	Marion St MP: 0.302		16	16	0		4,600	16	16	0	0	0	32	17
Columbia	106	Hampton St MP: 0.837	Gadsden St MP: 0.601		16	16	0		9,300	16	16	0	0	0	32	17
Columbia	116	Hampton St MP: 0.799	Barnwell St MP: 0.681		16	16	0		4,700	16	16	0	0	0	32	17
Columbia	60	Laurel St MP: 1.257	Sumter St MP: 1.712		16	16	0		8,700	16	16	0	0	0	32	17
Columbia	64	Laurel St MP: 0.86	Henderson St MP: 0.323		16	16	0		4,600	16	16	0	0	0	32	17
Columbia	FR 04	Farrow Rd MP: 1.627	Beltline Blvd	Fiber	17	15	0		6,400	17	15	0	0	0	32	17
Columbia	65	Barnwell St MP: 0.979	Laurel St MP: 0.759		16	16	0		1,000	16	16	0	0	0	32	17
Columbia	176	Park St MP: 0.5	Senate St MP: 0.1		16	16	0		3,400	16	16	0	0	0	32	17
Columbia	356	Harbison Blvd MP: 0.682	WB OFF/ON Ramp	Fiber	15	15	0	I	8,800	15	15	0	2	0	32	17
Columbia	58	Assembly St MP: 0.292	Laurel St MP: 1.459		16	16	0		-	16	16	0	0	0	32	17
District1	TS1521	SC48 MP: 5.984	S-1308 MP: 0.018	S-48 Bluff Rd@The Boulevard [Industrial Park]	8	24	0		11,500	8	24	0	0	0	32	17
District1	TS1210	US1 MP: 29.918	S-544	Augusta Rd. @ 13th St./ Senn St.	19	10	0		12,900	19	10	0	0	2	31	18
Columbia	CD 19	Colonial Dr MP: 1.14	Muller Ave		22	9	0		3,100	22	9	0	0	0	31	18
Columbia	DS 42	Leesburg Rd MP: 1.014	Greenlawn Rd		15	14	0		25,900	15	14	0	0	2	31	18
District1	TS1432	S-36 MP: 2.612	S-671 MP: 0.001	S-36 St. Andrews Rd. @ S-671 Piney Grove Rd.	22	7	0		17,900	22	7	0	0	2	31	18
Lexington	TS1457	US378 MP: 21.771	S-30 MP: 3.171	Sunset Blvd. @ Leaphart Rd.	19	10	0		28,600	19	10	0	0	2	31	18
District1	TS1619	S-218 MP: 0.949	Fontaine Rd MP: 0.949	Fontain Rd. @ Arbor Lake Dr. Fontaine Business Center	24	7	0		10,100	24	7	0	0	0	31	18
District1	TS1716	S-2033 MP: 2.441	S-1795 MP: 2.448	Sparkleberry Ln. @ Mallet Hill Rd.	20	11	0		6,600	20	11	0	0	0	31	18
District1	TS1365	US1 MP: 30.033	SC35 MP: 4.852	Meeting St @ 12th Street	19	10	0		12,900	19	10	0	0	2	31	18
District1	TS1206	SC302 MP: 20.818	S-378 MP: 0.003	SC-302 Airport Blvd. @ S-378 Airport Blvd - John Hardee Express Way	18	11	0		16,500	18	11	0	0	2	31	18
District1	TS1430	S-36 MP: 1.787	S-273 MP: 2.72	St. Andrews Rd. @ S-Tram Rd.	22	7	0		13,500	22	7	0	0	2	31	18
Lexington	TS1456	US378 MP: 22.139	Sunset Blvd MP: 22.139	US-378 Sunset Blvd @ Lott Ct.	19	10	0		28,600	19	10	0	0	2	31	18
District1	TS1405	SC602 MP: 9.47	S-275	Platt Springs Rd. @ Brooks Ave. / Zeigler St.	17	12	0		18,400	17	12	0	0	2	31	18
District1	TS1214	US1 MP: 28.551	S-312	Augusta Rd. @ Wade Street	19	10	0		33,300	19	10	0	0	2	31	18
District1	TS1386	S-70 MP: 2.179	S-167 MP: 0.002	Old Two Notch Rd. @ Cedarcrest Dr.	20	10	0		11,800	20	10	0	0	0	30	19
Columbia	BL 60	Beltline Blvd MP: 6.031	Kilbourne Rd MP: 3		27	1	0		25,000	27	1	0	0	2	30	19
District1	TS1750	US1 MP: 15.016	S-52	Two Notch Rd. @ Clemson Rd. W. Bound	21	7	0		21,100	21	7	0	0	2	30	19
District1	TS1549	US176 MP: 15.678	S-674 MP: 2.05	Broad River Rd. @ Piney Woods / Lost Creek	18	10	0		18,700	18	10	0	0	2	30	19
Columbia	284	Wheat St MP: 0.504	Pickens St MP: 0.806		15	15	0		2,300	15	15	0	0	0	30	19
Columbia	128	Washington St MP: 0.21	Sumter St MP: 1.311		15	15	0		8,700	15	15	0	0	0	30	19
Columbia	193	Park St MP: 0.398	Pendleton St MP: 0.953		15	15	0		3,400	15	15	0	0	0	30	19
Columbia	210	Park St MP: 0.298	College St MP: 0.093		15	15	0		3,400	15	15	0	0	0	30	19
District1	TS1749	US1 MP: 14.755	S-52 MP: 3.198	Two Notch Rd. @ Clemson Rd. East Bound	21	7	0		24,500	21	7	0	0	2	30	19
District1	TS1421	SC6 MP: 14.113	Lake Dr S MP: 14.113	South Lake Dr. @ Walmart/ Lowes / Shoppes White Knoll	15	13	0		26,000	15	13	0	0	2	30	19
District1	TS1585	S-151 MP: 1.794	Decker Blvd MP: 1.794	Decker @ Fashion Place Mall / Dent Middle School	7	21	0		24,100	7	21	0	0	2	30	19
District1	TS1609	SC555 MP: 5.195	S-923	Farrow Rd. @ Westmore RD. / Dixion Rd	21	7	0		13,200	21	7	0	0	2	30	19

**TRAFFIC SIGNALS OPERATIONS PRIORITIZATION RANKINGS
COATS MPO**

Maintained By	Custom Identifier	Primary Route	Secondary Route	Comment	Cabinets Average Age in Years	Controllers Average Age in Years	Support Poles by Type	Proximity to Interstate	AADT	Cabinet Points	Controller Points	Pole Points	Interstate Points	AADT Points	Total Points	COATS MPO Ranking
District1	TS1545	US176 MP: 18.742	S-42 MP: 0.7	Broad River Rd. @ St Andrews Rd.	14	14	0		17,300	14	14	0	0	2	30	19
Columbia	MS 39	Main St	Prescott Rd MP: 0.459		29	0	0		8,200	29	0	0	0	0	29	20
Columbia	BL 40	Beltline Blvd	Craig Rd MP: 0.47		18	9	0		14,900	18	9	0	0	2	29	20
Columbia	TN 20	Two Notch Rd MP: 4.869	Windover Rd MP: 0.537	Fiber	26	1	0		23,800	26	1	0	0	2	29	20
Columbia	BL 52	Beltline Blvd	Buchanan Dr		18	9	0		25,000	18	9	0	0	2	29	20
District1	TS1295	SC391 MP: 8.523	S-1112	Summerland Ave @ Bobcat (Batesburg Primary)	18	11	0		5,700	18	11	0	0	0	29	20
District1	TS1715	S-2033 MP: 0.777	Sparkleberry Ln MP: 0.777	Spring Valley High School Entrance	20	7	0		14,400	20	7	0	0	2	29	20
Columbia	RD 24	Rosewood Dr MP: 7.511	Kilbourne Rd	Fiber	26	1	0		19,000	26	1	0	0	2	29	20
District1	TS1286	US321 MP: 9.617	S-65 MP: 7.26	Charleston Hwy @ Mack Street	4	23	0		13,600	4	23	0	0	2	29	20
Columbia	RD 23	Rosewood Dr MP: 7.659	Bonham Rd	Fiber	26	1	0		19,000	26	1	0	0	2	29	20
District1	TS1623	SC12 MP: 6.4	I-77 MP: 12.312	Forest Dr @ I-77 S. Ramp	23	2	0	I	99,400	23	2	0	2	2	29	20
District1	TS1257	S-273 MP: 0.941	S-1551 MP: 1.26	Bush River Rd. @ Berryhill Rd./ I-20 West Bound Ramp	25	0	0	I	16,100	25	0	0	2	2	29	20
Columbia	RD 08	Rosewood Dr MP: 9.12	Pickens St	Fiber	26	1	0		16,400	26	1	0	0	2	29	20
Columbia	RD 15	Rosewood Dr MP: 8.423	Maple St	Fiber	27	0	0		19,000	27	0	0	0	2	29	20
Columbia	RD 10	Rosewood Dr MP: 8.861	Edisto Ave S MP: 0.883	Fiber	26	0	0		16,400	26	0	0	0	2	28	21
District1	TS1216	US1 MP: 27.765	S-592	US-1 Augusta Rd. @ Lowes Entrance	19	7	0		45,300	19	7	0	0	2	28	21
Columbia	TR 13	Trenholm Rd MP: 6.533	Beltline Blvd		17	9	0		25,000	17	9	0	0	2	28	21
District1	TS1604	SC555 MP: 8.011	I-77 MP: 19.054	Farrow Rd. @ 77 SB Off Ramp	15	11	0	I	-	15	11	0	2	0	28	21
Columbia	270	Blossom St	Saluda Ave		13	13	0		13,700	13	13	0	0	2	28	21
District1	TS1579	S-52 MP: 8.222	Clemson Rd MP: 8.222	Clemson Rd. @ Longreen Prkwy (Lowes)	12	14	0		34,700	12	14	0	0	2	28	21
District1	TS1476	SC35 MP: 5.39	S-981	Holland St. Fire Department	28	0	0		9,100	28	0	0	0	0	28	21
District1	TS1610	SC555 MP: 4.27	S-218 MP: 0.848	Farrow Rd. @ Wilkes Rd. / Fontaine RR	21	5	0		13,100	21	5	0	0	2	28	21
District1	TS1570	S-52 MP: 0.493	S-2923 MP: 0.001	Clemson Rd @ Clemson Frontage Rd Waffle House	15	11	0		33,800	15	11	0	0	2	28	21
Lexington	TS1465	US378 MP: 18.683	0	Sunset Blvd. @ Lexington Pavillion	13	13	0		33,800	13	13	0	0	2	28	21
District1	TS1566	I-26 Ramp MP: 107.728	S-31 MP: 0.35	Bush River Rd. @ West Bound Ramp / Morninghill Rd.	22	2	0	I	28,600	22	2	0	2	2	28	21
District1	TS1707	S-2214 MP: 1.668	S-1794	Polo Rd. @ Mallet Hill Rd.	15	13	0		8,900	15	13	0	0	0	28	21
District1	TS1444	US378 MP: 26.341	S-153 MP: 0.599	Sunset Blvd. @ North Lucas St.	26	0	0		15,900	26	0	0	0	2	28	21
District1	TS1654	S-83 MP: 4.356	Elders Pond Dr MP: 0.514	Hard Scrabble Rd. @ Elders Pond / Magnolia	15	11	0		26,100	15	11	0	0	2	28	21
Columbia	140	Lady St MP: 0.287	Gadsden St MP: 0.796		15	13	0		2,400	15	13	0	0	0	28	21
District1	TS1510	SC16 MP: 4.984	Beltline Rd	Beltlin Blvd @ Richland Fashion Mall	24	2	0		25,000	24	2	0	0	2	28	21
District1	TS1613	US321 MP: 6.751	I-20 MP: 69.644	Fairfield Rd. @ I-20 E.B. Ramp	26	0	0	I	8,800	26	0	0	2	0	28	21
District1	TS1215	US1 MP: 28.282	S-1115 MP: 0.002	Augusta Hwy @ Walmart Entrance	19	7	0		33,300	19	7	0	0	2	28	21
Columbia	RD 17	Rosewood Dr MP: 8.281	Holly St	Fiber	26	0	0		19,000	26	0	0	0	2	28	21
District1	TS1364	US1 MP: 30.429	S-370	US-1 Meeting St. @ S-370 9th St.	11	15	0		13,400	11	15	0	0	2	28	21
District1	TS1276	Charleston Hwy MP: 16.381	I-26 Ramp MP: 115.033	Charleston Hwy. @ I-26 East Bound Ramp	19	4	0	I	90,600	19	4	0	2	2	27	22
Columbia	RD 07	Rosewood Dr MP: 9.252	Marion St	Fiber	24	1	0		16,400	24	1	0	0	2	27	22
District1	TS1285	US321 MP: 11.11	S-663	Charleston Hwy @ Woodtrail	18	7	0		22,200	18	7	0	0	2	27	22
Columbia	254	Blossom St	Huger St	Intersection Camera	24	1	0		26,700	24	1	0	0	2	27	22
District1	TS1630	SC12 MP: 4.869	S-209 MP: 1.049	Foresr Dr @ Atascadero Dr\ Greenhill Rd	23	2	0		27,300	23	2	0	0	2	27	22
Columbia	371	Fort Jackson Blvd MP: 1.125	I-77 MP: 10.278	NB On/Off ramp	22	1	0	I	95,700	22	1	0	2	2	27	22
District1	TS1631	SC12 MP: 4.625	S-1402 MP: 0.543	Forest Dr @ Falcon Dr	23	2	0		27,300	23	2	0	0	2	27	22
Columbia	86	Huger St MP: 1.463	Taylor St MP: 0.5	Intersection Camera	24	1	0		36,500	24	1	0	0	2	27	22
Columbia	103	Huger St MP: 1.367	Hampton St MP: 0.551	Intersection Camera	24	1	0		36,500	24	1	0	0	2	27	22
Columbia	168	Gervais St MP: 1.828	Gregg St MP: 0.776		15	10	0		28,500	15	10	0	0	2	27	22
Columbia	376	Leesburg Rd MP: 0.169	NB ON Ramp	On ramp	22	1	0	I	87,500	22	1	0	2	2	27	22
District1	TS1242	US1 MP: 16.929	S-172 MP: 4.34	Augusta Hwy. @Wise Ferry Rd./Heritage Rd.	21	4	0		19,400	21	4	0	0	2	27	22
District1	TS1629	SC12 MP: 5.054	S-260 MP: 0.948	Forest Dr @ Clemson Ave	23	2	0		27,300	23	2	0	0	2	27	22
District1	TS1633	SC12 MP: 4.052	S-1109 MP: 0.002	Forest Dr @ Troy Rd\Richland Mall Entrance	23	2	0		19,800	23	2	0	0	2	27	22
District1	TS1636	SC12 MP: 3.438	S-875	Forest Dr @ St. Julian Place St	23	2	0		19,800	23	2	0	0	2	27	22
District1	TS1637	SC12 MP: 3.059	S-943	Forest Dr @ Pinehurst Dr	23	2	0		19,800	23	2	0	0	2	27	22
District1	TS1626	SC12 MP: 5.87	S-3036	Forest Dr @ Lakeshore Dr/Greg Pkwy	23	2	0		28,000	23	2	0	0	2	27	22

**TRAFFIC SIGNALS OPERATIONS PRIORITIZATION RANKINGS
COATS MPO**

Maintained By	Custom Identifier	Primary Route	Secondary Route	Comment	Cabinets Average Age in Years	Controllers Average Age in Years	Support Poles by Type	Proximity to Interstate	AADT	Cabinet Points	Controller Points	Pole Points	Interstate Points	AADT Points	Total Points	COATS MPO Ranking
District1	TS1635	SC12 MP: 3.631	S-115 MP: 0.412	Forest Dr @ Glenwood Rd	23	2	0		19,800	23	2	0	0	2	27	22
District1	TS1632	SC12 MP: 4.201	SC16 MP: 4.665	Forest Dr @ Beltline Blvd	23	2	0		27,300	23	2	0	0	2	27	22
Columbia	TN 21	Two Notch Rd MP: 5.001	Carter St	Fiber	24	1	0		23,800	24	1	0	0	2	27	22
Lexington	TS1240	US1 MP: 18.946	US378 MP: 14.503	US-1/ US-378 W. Main Street @ S-1378 Gibson Rd.	13	12	0		19,400	13	12	0	0	2	27	22
District1	TS1484	SC35 MP: 1.96	Old Taylor Rd MP: 0.253	12th St. @ Old Taylor Rd./SCE&G Entrance	13	11	0		12,200	13	11	0	0	2	26	23
District1	TS1202	SC302 MP: 21.878	I-26 MP: 113.014	Airport Blvd. @ I-26 West Bound Ramp	11	11	0	I	96,900	11	11	0	2	2	26	23
Columbia	RD 21	Rosewood Dr MP: 7.831	Ott St MP: 0.666	Fiber	24	0	0		19,000	24	0	0	0	2	26	23
District1	TS1562	S-1975 MP: 2.49	S-1196 MP: 2.69	Brookfield Rd. @ E. Boundry / Windsor Lake Blvd.	21	5	0		3,900	21	5	0	0	0	26	23
Columbia	FR 31	Wilkes Rd MP: 0.43	David St		17	9	0		6,600	17	9	0	0	0	26	23
District1	TS1281	US321 MP: 15.4	US21 MP: 13.583	Savannah Hwy @ Charleston Hwy / Silver lake	12	12	0		25,300	12	12	0	0	2	26	23
District1	TS1738	US1 MP: 10.069	Alpine Rd MP: 2.41	Two Notch Rd @ Alpine Rd	24	0	0		38,300	24	0	0	0	2	26	23
Columbia	DS 43	Garners Ferry Rd MP: 26.221	I-77 MP: 8.611	NB On/Off ramp Fiber	21	1	0	I	49,700	21	1	0	2	2	26	23
District1	TS1782	US21 MP: 17.431	S-1041 MP: 6.529	Wilson Blvd. @ Rimer Pond Rd. RR	14	10	0		14,300	14	10	0	0	2	26	23
District1	TS1485	SC35 MP: 0.924	0	12th St. @ SCANA Campus Entrance	11	13	0		12,200	11	13	0	0	2	26	23
District1	TS1622	SC12 MP: 6.42	I-77 MP: 12.306	Forest Dr @ I-77 N. Ramp	20	2	0	I	99,400	20	2	0	2	2	26	23
Lexington	TS1458	US378 MP: 21.503	S-387	Sunset Blvd. @ Cromer Rd./Daveda Rd.	19	5	0		44,700	19	5	0	0	2	26	23
District1	TS1683	SC215 MP: 0.912	S-1625	Monticello Rd. @ Club Rd. / Dixie Rd.	22	2	0		12,800	22	2	0	0	2	26	23
District1	TS1608	SC555 MP: 5.613	I-20	Farrow Rd. @ I-20 EB	22	0	0	I	13,200	22	0	0	2	2	26	23
District1	TS1422	SC6 MP: 14.233	SC602 MP: 0.001	SC-6 South Lake Dr. @ SC-602 Platt Springs Rd.	13	11	0		13,700	13	11	0	0	2	26	23
Lexington	TS1230	US1 MP: 21.241	Augusta Hwy	US-1 Augusta Hwy. @ Library Hill Ln.	13	11	0		29,000	13	11	0	0	2	26	23
District1	TS1721	US1 MP: 5.765	S-1562 MP: 0.57	Two Notch Rd. @ Baldwin / Hutto	24	0	0		19,500	24	0	0	0	2	26	23
District1	TS1689	US21 MP: 6.962	S-908 MP: 0.58	North Main St. @ Frye Rd.	21	5	0		8,200	21	5	0	0	0	26	23
District1	TS1576	S-52 MP: 4.512	Summit Pkwy	Clemson Rd. @ Summit Parkway- upgraded 8/21/2019	23	1	0		19,500	23	1	0	0	2	26	23
District1	TS1711	SC768 MP: 2.939	S-50 MP: 1.092	Shop Rd. @ Atlas Rd.	17	7	0		19,500	17	7	0	0	2	26	23
Lexington	TS1232	US1 MP: 20.3	SC6 MP: 8.82	US-1 Main St. @ SC-6 South Lake Dr.	19	5	0		17,900	19	5	0	0	2	26	23
District1	TS1599	US76 MP: 0.12	S-405 MP: 3.028	Dutch Fork Rd. @ Old Hilton / Wessinger Rd.	17	7	0		24,200	17	7	0	0	2	26	23
Columbia	378	Garners Ferry Rd MP: 27.245	Patterson Rd MP: 0.983	Fiber	22	1	0		33,400	22	1	0	0	2	25	24
Columbia	BL 61	Beltline Blvd MP: 6.151	Deveraux Rd		22	1	0		25,000	22	1	0	0	2	25	24
Columbia	BL 64	Cross Hill Rd	Beltline Blvd MP: 6.445		24	1	0		6,900	24	1	0	0	0	25	24
Columbia	161	Gervais St MP: 1.117	Main St MP: 0.884		22	1	0		31,400	22	1	0	0	2	25	24
Columbia	DS 36	Garners Ferry Rd MP: 25.482	Cedar Terr	Fiber	22	1	0		46,000	22	1	0	0	2	25	24
Columbia	DS 31	Garners Ferry Rd MP: 25.061	Woodhill Cir	Fiber Intersection Camera	22	1	0		46,000	22	1	0	0	2	25	24
District1	TS1420	SC6 MP: 12.637	S-243 MP: 6.108	South Lake Dr. @ Nazareth Church Rd.	13	10	0		26,000	13	10	0	0	2	25	24
Columbia	DS 38	Garners Ferry Rd MP: 25.73	Landmark	Fiber	22	1	0		46,000	22	1	0	0	2	25	24
Columbia	DS 40	Garners Ferry Rd MP: 25.933	Leesburg Rd	Fiber	22	1	0		49,700	22	1	0	0	2	25	24
District1	TS1625	SC12 MP: 6.343	Percival Rd MP: 6.343	Forest Dr @ Percival Rd	23	2	0		11,400	23	2	0	0	0	25	24
District1	TS1277	US21 MP: 16.177	US176	Charleston Hwy @ Cayce Crossings / Denberg Rd	19	4	0		33,000	19	4	0	0	2	25	24
District1	TS1703	SC12 MP: 8.141	I-77 MP: 13.795	Percival Rd. @ Decker Blvd. / I-77 South Bound Ramp	14	7	0	I	14,400	14	7	0	2	2	25	24
District1	TS1638	SC12 MP: 2.869	S-1778	Forest Dr @ Providence St	23	0	0		19,800	23	0	0	0	2	25	24
District1	TS1644	US76 MP: 29.901	US378 MP: 10.450990692139	Garners Ferry Rd @ Trotter Rd \ Old Hopkins Rd	16	7	0		27,700	16	7	0	0	2	25	24
Columbia	TR 03	Trenholm Rd MP: 7.57	Glenwood Rd		24	1	0		11,900	24	1	0	0	0	25	24
District1	TS1267	S-48 MP: 2.599	I-26 MP: 91.118	S-48 Columbia Ave. @ I-26 West Bound Ramp	19	2	0	I	44,900	19	2	0	2	2	25	24
Lexington	TS1238	US1 MP: 19.501	US378 MP: 15.06	W. Main St. @ Park Rd	23	0	0		35,300	23	0	0	0	2	25	24
Columbia	DS 06	Devine St MP: 2.19	Woodrow St MP: 0.826	Fiber	21	1	0		13,600	21	1	0	0	2	24	25
Columbia	DS 12	Devine St MP: 24.484	Crowson Rd MP: 0.415	Fiber	21	1	0		29,200	21	1	0	0	2	24	25
District1	TS1486	SC35 MP: 0.455	Saxe Gotha Dr	SC-35 12th St @ Saxe Gotha Drive	11	11	0		12,200	11	11	0	0	2	24	25
Columbia	DS 07	Devine St MP: 2.322	Maple St MP: 1.188	Fiber	21	1	0		13,600	21	1	0	0	2	24	25
Columbia	332	Assembly St MP: 1.873	Whaley St MP: 0.503		11	11	0		25,500	11	11	0	0	2	24	25
District1	TS1592	US76 MP: 4.947	SC6	Dutch Fork @ Dreher Shoals Rd.	17	5	0		24,200	17	5	0	0	2	24	25
Columbia	DS 09	Devine St MP: 2.58	Sims Ave MP: 0.19	Fiber	22	0	0		13,600	22	0	0	0	2	24	25
District1	TS1559	US176 MP: 10.019	S-80 MP: 0.002	Broad River Rd. @ Shady Lane / Wal-Mart Entrance.	12	12	0		7,700	12	12	0	0	0	24	25

**TRAFFIC SIGNALS OPERATIONS PRIORITIZATION RANKINGS
COATS MPO**

Maintained By	Custom Identifier	Primary Route	Secondary Route	Comment	Cabinets Average Age in Years	Controllers Average Age in Years	Support Poles by Type	Proximity to Interstate	AADT	Cabinet Points	Controller Points	Pole Points	Interstate Points	AADT Points	Total Points	COATS MPO Ranking
District1	TS1564	S-31 MP: 0.796	S-2263	Bush River @ Colonial Life Blvd. [Dutch Square Mall]	22	0	0		28,600	22	0	0	0	2	24	25
District1	TS1584	S-151 MP: 1.869	S-33 MP: 1.902	Decker Blvd. @ Trenholm Rd.	24	0	0		9,500	24	0	0	0	0	24	25
District1	TS1548	US176 MP: 17.044	S-1280 MP: 1.254	Broad River @ Piney GR.	22	0	0		16,400	22	0	0	0	2	24	25
District1	TS1591	US76 MP: 5.685	Dutch Fork Rd MP: 5.685	Dutch Fork Rd. @ Walmart Entrance	11	11	0		20,000	11	11	0	0	2	24	25
Columbia	GV 11	Gervais St	Trenholm Rd MP: 7.837		23	1	0		11,900	23	1	0	0	0	24	25
District1	TS1217	US1 MP: 27.418	S-274 MP: 0.002	US-1 Augusta Rd. @ Methodist Park Rd.	19	3	0		45,300	19	3	0	0	2	24	25
District1	TS1597	US76 MP: 1.522	S-1403 MP: 0.742	Dutch Fork Rd. @ Three Dog Rd.	17	5	0		24,200	17	5	0	0	2	24	25
District1	TS1656	SC83	0	Hardscrabble @ Summit Commons / Ridgeview High	11	11	0		20,500	11	11	0	0	2	24	25
Lexington	TS1451	US378 MP: 23.597	I-26 MP: 109.543	US-378 Sunset Blvd. @ I-26 East Bound Ramp	16	4	0	I	95,400	16	4	0	2	2	24	25
District1	TS1342	SC60 MP: 0.002	SC6 MP: 2.7	Lake Murray Blvd @ Old Bush River Rd./ N. Lake Dr.	15	7	0		26,700	15	7	0	0	2	24	25
District1	TS1220	US1 MP: 26.13	S-1508 MP: 1.509	Augusta Hwy. @ Ermine Rd.	19	3	0		32,300	19	3	0	0	2	24	25
District1	TS1274	US21 MP: 17.039	US176	Charleston Hwy. @ Old Dunbar	19	3	0		22,000	19	3	0	0	2	24	25
District1	TS1418	SC6 MP: 10.556	I-20 MP: 54.836	SC-6 South Lake Dr. @ I-20 East Bound Ramp	17	3	0	I	49,100	17	3	0	2	2	24	25
District1	TS1346	S-30 MP: 1.393	S-865	Leaphart Rd. @ Hebron Rd.	4	20	0		10,000	4	20	0	0	0	24	25
District1	TS1684	SC215 MP: 1.7	I-20 MP: 68.23	Monticello Rd. @ I-20 East Bound Ramp	10	10	0	I	12,800	10	10	0	2	2	24	25
District1	TS1357	SC302 MP: 19.033	S-72 MP: 2.996	Edmund Hwy. @ Old Dunbar Rd.	12	10	0		16,500	12	10	0	0	2	24	25
Columbia	MS 04	Main St MP: 3.071	Confederate Ave	Fiber	11	11	0		16,200	11	11	0	0	2	24	25
District1	TS1413	SC602 MP: 0.36	S-244 MP: 0.728	SC-602 Platt Springs Rd. @ S-244 Old Orangeburg Rd.	20	2	0		16,600	20	2	0	0	2	24	25
District1	TS1755	S-33 MP: 5.363	S-270	Trenholm Rd @ Converse Rd	19	2	0		14,400	19	2	0	0	2	23	26
District1	TS1747	US1 MP: 14.07	S-2271 MP: 0.73	Two Notch Rd. @ Valhalla Dr. / Risdon Way RR	21	0	0		36,900	21	0	0	0	2	23	26
District1	TS1885	SC120 MP: 13.773	S-227 MP: 1.209	Pinewood @ Oakland Ave.	18	3	0		20,800	18	3	0	0	2	23	26
Columbia	167	Gervais St MP: 1.719	Barnwell St MP: 0.406		20	1	0		28,500	20	1	0	0	2	23	26
Columbia	TN 02	Two Notch Rd MP: 3.096	Laurel St MP: 0.27	Fiber	20	1	0		14,100	20	1	0	0	2	23	26
Columbia	DS 22	Devine St MP: 24.152	Beltline Blvd MP: 6.751	Fiber	20	1	0		29,200	20	1	0	0	2	23	26
District1	TS1259	S-273 MP: 0.542	0	Bush River Rd. @ Independence Ave.	19	2	0		18,900	19	2	0	0	2	23	26
District1	TS1280	US21 MP: 14.128	US176	Charleston Hwy @ Gardner's Terrace Rd.	10	11	0		25,300	10	11	0	0	2	23	26
District1	TS1278	US21 MP: 16.048	S-73 MP: 14.93	Charleston Hwy. @ Fish Hatchery Rd. / I-77 Ramp	19	2	0		33,000	19	2	0	0	2	23	26
Columbia	GV 09	Gervais St MP: 8.03	Woodrow St MP: 0.001		22	1	0		11,600	22	1	0	0	0	23	26
Columbia	DS 24	Devine St MP: 24.36	Jackson Blvd	Fiber	21	0	0		29,200	21	0	0	0	2	23	26
District1	TS1710	SC768 MP: 4.325	S-48	Shop Rd. @ South Beltline Rd.	22	1	0		7,400	22	1	0	0	0	23	26
District1	TS1339	SC60 MP: 2.109	S-356	Lake Murray Blvd. @ Nursery Rd./Ridgemont Dr.	14	7	0		15,400	14	7	0	0	2	23	26
District1	TS1509	SC16 MP: 5.167	S-1402 MP: 0.006	Beltline Rd @ Falcon Rd	19	2	0		25,000	19	2	0	0	2	23	26
District1	TS1219	US1 MP: 26.33	S-870 MP: 0.93	Augusta Hwy. @ Wren Rd.	18	3	0		32,300	18	3	0	0	2	23	26
District1	TS1222	US1 MP: 24.193	S-70 MP: 0.001	Augusta Hwy @ Old Two Notch Rd. / Kitty Wake Dr.	19	2	0		28,200	19	2	0	0	2	23	26
District1	TS1443	US378 MP: 26.748	SC2 MP: 3.94	Sunset Blvd. @ State Street	12	11	0		9,600	12	11	0	0	0	23	26
Columbia	DS 26	Garners Ferry Rd MP: 24.601	Wildcat Rd MP: 0.59	Fiber	20	1	0		46,000	20	1	0	0	2	23	26
District1	TS1744	US1 MP: 13.099	S-1274 MP: 3.179	Two Notch @ Brickyard	20	1	166.66667		36,900	20	1	0	0	2	23	26
Columbia	GS 07	Stoneridge Dr MP: 0.402	Greystone Blvd MP: 0.73		22	0	0		6,100	22	0	0	0	0	22	27
District1	TS1643	US76 MP: 28.676	US378 MP: 9.2260005950928	Garners Ferry Rd @ Universal Dr. Updated 8/8/2019	20	0	0		37,600	20	0	0	0	2	22	27
District1	TS1531	S-1274 MP: 2.26	S-3990 MP: 0.002	Brickyard Rd. @ Green Springs Rd.	20	0	0		13,600	20	0	0	0	2	22	27
Columbia	DS 15	Devine St MP: 23.449	Bonham Rd MP: 0.133	Fiber	21	1	0		-	21	1	0	0	0	22	27
District1	TS1393	S-408 MP: 3.643	S-485 MP: 1.736	Pilgrim Church Rd. @ Old Cherokee Rd.	22	0	0		11,500	22	0	0	0	0	22	27
District1	TS1582	S-127 MP: 1.756	S-435 MP: 0.726	Covenant Rd. @ Bethel Church Rd.	22	0	0		4,500	22	0	0	0	0	22	27
District1	TS1756	S-33 MP: 3.289	S-827	Trenholm Rd. @ Rockbridge Rd.	22	0	0		9,500	22	0	0	0	0	22	27
District1	TS1327	SC12 MP: 0.17	S-285 MP: 1.145	SC-12 Jarvis Klapman Blvd. @ S-285 Hook St.	10	10	0		13,200	10	10	0	0	2	22	27
District1	TS1228	I-20 Ramp MP: 57.545	US1 MP: 22.685	Augusta Hwy @ West Bound Ramp	8	10	0	I	29,000	8	10	0	2	2	22	27
District1	TS1705	SC12 MP: 10.6	S-63	Percival Rd @ Alpine Rd	11	11	0		10,900	11	11	0	0	0	22	27
Columbia	CD 20	Colonial Dr MP: 1.228	Columbia College Dr MP: 0.86		22	0	0		7,100	22	0	0	0	0	22	27
Columbia	DS 50	Garners Ferry Rd MP: 27.046	Atlas Rd MP: 2.82	Fiber	20	0	0		33,400	20	0	0	0	2	22	27
Lexington	TS1313	US1 MP: 19.626	US378 MP: 15.19	Columbia Ave. @ Old Chapin Rd./ Main St.	8	12	0		35,300	8	12	0	0	2	22	27
Lexington	TS1310	US378 MP: 15.855	SC6 MP: 8.207	US-378 Columbia Ave. @ Dreher St. / SC-6 North Lake Dr.	0	20	0		30,000	0	20	0	0	2	22	27

**TRAFFIC SIGNALS OPERATIONS PRIORITIZATION RANKINGS
COATS MPO**

Maintained By	Custom Identifier	Primary Route	Secondary Route	Comment	Cabinets Average Age in Years	Controllers Average Age in Years	Support Poles by Type	Proximity to Interstate	AADT	Cabinet Points	Controller Points	Pole Points	Interstate Points	AADT Points	Total Points	COATS MPO Ranking
District1	TS1419	SC6 MP: 10.878	S-70 MP: 4.106	South Lake Drive @ Old Two Notch Rd.	17	3	0		25,300	17	3	0	0	2	22	27
District1	TS1433	S-36 MP: 2.837	S-107 MP: 3.76	St. Andrews Rd @ Old Bush River Rd.	18	2	0		17,900	18	2	0	0	2	22	27
District1	TS1525	S-59 MP: 0.174	S-1367 MP: 0.005	Blythewood Rd. @ Boney Rd. / Blythewood Shopping Center	14	6	0		19,400	14	6	0	0	2	22	27
District1	TS1751	US1 MP: 15.79	S-53 MP: 2.82	Two Notch @ Bookman / Spears Creek Church Rd.	10	10	0		21,100	10	10	0	0	2	22	27
District1	TS1530	S-1274 MP: 2.995	S-1834	Brickyard Rd. @ North Springs Rd.	20	0	0		13,600	20	0	0	0	2	22	27
District1	TS1250	US1 MP: 10.27	S-24 MP: 3.85	US-1 Augusta Hwy. @ Peach Festival Rd./ Priceville Hwy.	21	0	0		6,400	21	0	0	0	0	21	28
Columbia	357	Harbison Blvd MP: 0.85	EB ON/OFF Ramp	Fiber	15	2	0	I	101,000	15	2	0	2	2	21	28
Columbia	9	Elmwood Ave MP: 19.758	Sumter St MP: 2.013		18	1	0		39,700	18	1	0	0	2	21	28
Columbia	159	Gervais St MP: 0.901	Park St MP: 0.596		17	2	0		30,500	17	2	0	0	2	21	28
District1	TS1212	US1 MP: 28.709	SC12 MP: 0.018	Augusta Hwy @ Jarvis Klapman Blvd	19	0	0		12,900	19	0	0	0	2	21	28
Columbia	FR 08	Farrow Rd MP: 2.128	Columbia College Dr MP: 1.42	Fiber	19	0	0		13,100	19	0	0	0	2	21	28
Columbia	62	Bull St MP: 20.27	Laurel St MP: 1.06		20	1	0		-	20	1	0	0	0	21	28
District1	TS1372	SC6 MP: 2.019	S-38 MP: 0.001	North Lake Dr. @ River Road	13	6	0		13,300	13	6	0	0	2	21	28
Lexington	TS1370	SC6 MP: 5.681	S-28 MP: 0.001	North Lake Dr. @ Andrew Corley Rd.	14	5	0		15,500	14	5	0	0	2	21	28
District1	TS1678	SC262 MP: 3.211	S-490 MP: 0.004	Leesburg Rd. @ Ulmer Rd.	19	0	0		25,900	19	0	0	0	2	21	28
District1	TS1679	SC262 MP: 3.9	S-70 MP: 1.71	Leesburg Rd. @ Trotter Rd.	19	0	0		25,900	19	0	0	0	2	21	28
District1	TS1571	S-52 MP: 0.628	S-2033 MP: 2.638	Clemson Rd @ Sparkleberry Ln.	7	12	0		33,800	7	12	0	0	2	21	28
District1	TS1205	SC302 MP: 21.26	S-71 MP: 3.48	Airport Blvd. @ Boston Ave.	18	1	0		33,600	18	1	0	0	2	21	28
District1	TS1535	US176 MP: 20.485	S-31 MP: 1.196	Broad River Rd. @ Bush River Rd.	15	4	0		37,600	15	4	0	0	2	21	28
District1	TS1554	US76 MP: 8.982	I-26 MP: 101.235	Broad River Rd. @ I-26 East Bound Ramp	14	3	0	I	24,000	14	3	0	2	2	21	28
Lexington	TS1369	SC6 MP: 6.031	S-408 MP: 5.13	North Lake Dr. @ Pilgrim Church Rd.	14	5	0		15,500	14	5	0	0	2	21	28
District1	TS1381	S-408 MP: 0.791	S-173	Old Cherokee Rd. @ Wise Ferry Rd	17	4	0		1,500	17	4	0	0	0	21	28
District1	TS1337	SC60 MP: 2.619	S-36 MP: 5.519	Lake Murray Blvd. @ St. Andrews Rd. RR	19	0	0		15,400	19	0	0	0	2	21	28
Lexington	TS1464	US378 MP: 20.396	Northside Blvd MP: 20.86	Sunset Blvd. @ Northside Blvd.	10	9	0		33,800	10	9	0	0	2	21	28
District1	TS1406	SC602 MP: 9.191	S-365	Platt Springs Rd. @ Rainbow Drive	17	2	0		18,400	17	2	0	0	2	21	28
District1	TS1547	US176 MP: 17.339	Broad River Rd MP: 17.339	Broad River Rd. @ Bert Friday / Department of Corrections	19	0	0		17,300	19	0	0	0	2	21	28
Lexington	TS1371	SC6 MP: 4.921	S-68 MP: 5.08	North Lake Dr. @ Corley Mill Rd.	14	5	0		26,700	14	5	0	0	2	21	28
Lexington	TS1470	US378 MP: 17.224	Scotland Dr	Sunset Blvd. @ Scotland Dr. / Kohl's	9	10	0		41,700	9	10	0	0	2	21	28
District1	TS1513	SC16 MP: 3.008	S-2561	Beltline Blvd @ Brookland Cir	19	0	0		22,200	19	0	0	0	2	21	28
Columbia	163	Gervais St MP: 1.32	Marion St MP: 0.885		17	1	0		31,400	17	1	0	0	2	20	29
Columbia	6	Elmwood Ave MP: 2.45	Park St MP: 0.295		17	1	0		50,700	17	1	0	0	2	20	29
Columbia	130	Bull St MP: 20.667	Washington St MP: 0.402		17	1	0		25,100	17	1	0	0	2	20	29
Columbia	FR 05	Farrow Rd MP: 1.828	SC277 MP: 1.9	NB On/Off Ramp Fiber	17	1	0		50,000	17	1	0	0	2	20	29
Columbia	375	Fort Jackson Blvd MP: 1.007	I-77 MP: 10.319	SB On/Off ramp	17	1	0	I	10,500	17	1	0	2	0	20	29
Columbia	265	Blossom St MP: 1.057	Pickens St MP: 0.911		17	1	0		16,700	17	1	0	0	2	20	29
Columbia	7	Elmwood Ave MP: 2.592	Assembly St	Intersection Camera	17	1	0		50,700	17	1	0	0	2	20	29
Columbia	165	Gervais St MP: 1.522	Pickens St MP: 1.495		17	1	0		28,500	17	1	0	0	2	20	29
District1	TS1340	SC60 MP: 1.541	S-239 MP: 0.001	Lake Murray Blvd @ Weed Dr. / Meredith Dr	14	4	0		15,400	14	4	0	0	2	20	29
Columbia	HA 05	Harden St MP: 0.975	Slighs Ave		17	1	0		22,000	17	1	0	0	2	20	29
District1	TS1417	SC6 MP: 10.2	S-626 MP: 2.398	South Lake Dr. @ Industrial Dr. / Glassmaster Rd.	16	2	0		21,600	16	2	0	0	2	20	29
District1	TS1501	S-63 MP: 0.568	I-20 MP: 76.142	Alpine Rd @ I-20 East Ramp	6	10	0	I	50,400	6	10	0	2	2	20	29
District1	TS1553	US176 MP: 13.694	S-2894 MP: 0.151	Broad River Rd. @ Western Ln.	13	5	0		13,300	13	5	0	0	2	20	29
District1	TS1618	S-218 MP: 1.105	SC277 MP: 4.297	Fontaine Rd. @ South Bound Ramp	9	11	0		10,100	9	11	0	0	0	20	29
District1	TS1552	US176 MP: 14.101	S-129 MP: 2.675	US-176 Broad River Rd. @ S-670 Kinley Rd. / Kennerly Rd	18	0	0		13,300	18	0	0	0	2	20	29
Columbia	267	Blossom St MP: 1.261	Barnwell St		17	1	0		16,700	17	1	0	0	2	20	29
District1	TS1223	US1 MP: 22.96	Cedar Rd MP: 1.119	Augusta Hwy. @ Cedar Rd. / Dooly Rd. / I-20 EB Ramp	8	10	0		28,200	8	10	0	0	2	20	29
District1	TS1481	S-71 MP: 1	S-104	Watling Rd. @ Old Barnwell Rd./Wilton Rd.	20	0	0		9,500	20	0	0	0	0	20	29
Columbia	261	Blossom St MP: 0.681	Main St MP: 0.004		17	1	0		16,700	17	1	0	0	2	20	29
District1	TS1699	S-1036 MP: 1.391	S-1914	Parklane Rd. @ Springtree Dr. / Springcrest Dr.	10	10	0		-	10	10	0	0	0	20	29
Lexington	TS1233	US1 MP: 20.183	S-91 MP: 1.53	Main Street @ Church St.	18	0	0		17,900	18	0	0	0	2	20	29
Columbia	374	Harbison Blvd	Bower Pkwy	Intersection Camera Fiber	15	2	0		28,000	15	2	0	0	2	19	30

**TRAFFIC SIGNALS OPERATIONS PRIORITIZATION RANKINGS
COATS MPO**

Maintained By	Custom Identifier	Primary Route	Secondary Route	Comment	Cabinets Average Age in Years	Controllers Average Age in Years	Support Poles by Type	Proximity to Interstate	AADT	Cabinet Points	Controller Points	Pole Points	Interstate Points	AADT Points	Total Points	COATS MPO Ranking
Columbia	BU 04	Bull St MP: 0.434	Confederate Ave		17	0	0		46,700	17	0	0	0	2	19	30
Columbia	95	Taylor St MP: 1.528	Marion St MP: 0.491		16	1	0		20,800	16	1	0	0	2	19	30
Columbia	109	Assembly St MP: 0.587	Hampton St MP: 0.103		16	1	0		22,800	16	1	0	0	2	19	30
Columbia	126	Washington St	Assembly St MP: 0.685		16	1	0		22,800	16	1	0	0	2	19	30
Columbia	158	Gervais St MP: 0.797	Lincoln St MP: 0.297		17	2	0		-	17	2	0	0	0	19	30
Columbia	228	Assembly St MP: 1.284	Greene St MP: 1.544		16	1	0		28,800	16	1	0	0	2	19	30
Columbia	359	Harbison Blvd	Columbiana Cir	Fiber	15	2	0		28,000	15	2	0	0	2	19	30
Columbia	366	George Rodgers Blvd	Bluff Rd MP: 3.145	Fiber	17	0	0		23,400	17	0	0	0	2	19	30
Columbia	372	Harbison Blvd	Saturn Pkwy	Fiber	15	2	0		32,600	15	2	0	0	2	19	30
Columbia	FR 07	Farrow Rd MP: 1.955	SC277 MP: 1.993	SB On/Off Ramp Fiber	17	0	0		44,600	17	0	0	0	2	19	30
District1	TS1245	US1 MP: 14.569	S-169 MP: 2.901	Augusta Hwy. @ Calks Ferry Rd.	17	0	0		14,700	17	0	0	0	2	19	30
Columbia	98	Taylor St MP: 1.824	Henderson St MP: 0.131		16	1	0		20,800	16	1	0	0	2	19	30
Columbia	97	Taylor St MP: 1.728	Pickens St MP: 1.888		16	1	0		20,800	16	1	0	0	2	19	30
Columbia	BU 07	Bull St MP: 0.68	Harden St		16	1	0		46,700	16	1	0	0	2	19	30
Columbia	MA 09	Millwood Ave MP: 22.398	Woodrow St MP: 0.42		16	1	0		22,500	16	1	0	0	2	19	30
Columbia	MA 11	Millwood Ave MP: 22.534	Maple St MP: 1.548		17	0	0		22,500	17	0	0	0	2	19	30
District1	TS1580	SC555 MP: 11.25	S-52 MP: 8.519	Farrow Rd. @ Clemson Rd.	15	2	0		13,500	15	2	0	0	2	19	30
District1	TS1628	SC12 MP: 5.374	Forest Dr MP: 5.374	Forest Dr @ Forest Park Mall	15	2	0		27,300	15	2	0	0	2	19	30
Columbia	147	Bull St MP: 20.761	Lady St MP: 0.985		16	1	0		25,100	16	1	0	0	2	19	30
Columbia	157	Gervais St MP: 0.698	Gadsden St MP: 0.89		17	2	0		-	17	2	0	0	0	19	30
Columbia	260	Blossom St MP: 0.585	Assembly St MP: 1.477		16	1	0		16,700	16	1	0	0	2	19	30
Columbia	41	Richland St MP: 0.199	Assembly St MP: 0.192		16	1	0		20,200	16	1	0	0	2	19	30
Columbia	89	Taylor St MP: 0.198	Gadsden St MP: 0.503		16	1	0		12,500	16	1	0	0	2	19	30
Columbia	RD 13	Rosewood Dr MP: 8.599	Harden St	Fiber	17	0	0		16,400	17	0	0	0	2	19	30
District1	TS1540	US176 MP: 19.689	I-20 MP: 65.015	Broad River Rd. @ I-20 West Bound Ramp	15	0	0	I	103,500	15	0	0	2	2	19	30
Columbia	92	Taylor St MP: 1.231	Assembly St MP: 0.49		16	1	0		20,800	16	1	0	0	2	19	30
District1	TS1533	US176 MP: 21.116	Greystone Blvd MP: 0.037	Broad River Rd. @ Greystone Blvd	15	2	0		24,400	15	2	0	0	2	19	30
Columbia	360	Harbison Blvd	Harbison Ct	Fiber	15	2	0		28,000	15	2	0	0	2	19	30
District1	TS1694	S-1862 MP: 0.684	Friarsgate Blvd MP: 0.287	N. Royal Tower @ Friarsgate Blvd	19	0	0		9,500	19	0	0	0	0	19	30
District1	TS1686	SC215 MP: 2.102	S-43	Montecello @ Blueridge Terrace / Peeples	8	11	0		10,200	8	11	0	0	0	19	30
District1	TS1748	US1 MP: 14.523	S-2386 MP: 1.799	Two Notch Rd. @ Fashion / Fore RR	15	2	0		36,900	15	2	0	0	2	19	30
District1	TS1603	SC555 MP: 8.458	S-424 MP: 0.191	Farrow Rd. @ Rabon/Gateway Blvd.	7	10	0		32,900	7	10	0	0	2	19	30
Columbia	TN 10	Two Notch Rd MP: 3.827	Harrison Rd	Fiber	15	1	0		17,400	15	1	0	0	2	18	31
Columbia	TN 18	Two Notch Rd MP: 4.627	Beltline Blvd MP: 3.151	Fiber	15	1	0		18,000	15	1	0	0	2	18	31
Columbia	382	Garners Ferry Rd MP: 27.476	Fountain Lake Dr	Fiber Intersection Camera	16	0	0		33,400	16	0	0	0	2	18	31
Columbia	CD 11	Marshall St MP: 0.283	Colonial Dr MP: 0.229		18	0	0		6,400	18	0	0	0	0	18	31
Columbia	MS 25	Main St	Columbia College Dr MP: 0.622		9	9	0		10,500	9	9	0	0	0	18	31
Columbia	34	Harden St MP: 0.409	Calhoun St MP: 1.41		15	1	0		22,000	15	1	0	0	2	18	31
Columbia	162	Gervais St MP: 1.222	Sumter St MP: 1.12	Gervais @ Sumter	17	1	0		-	17	1	0	0	0	18	31
Columbia	170	Gervais St MP: 2.039	Harden St MP: 0.604		15	1	0		28,500	15	1	0	0	2	18	31
Columbia	194	Assembly St MP: 1.087	Pendleton St MP: 0.852		16	0	0		28,800	16	0	0	0	2	18	31
Columbia	211	Assembly St MP: 1.188	College St MP: 0.203		15	1	0		28,800	15	1	0	0	2	18	31
Columbia	DS 16	Devine St MP: 23.599	Kilbourne Rd MP: 2.278	Fiber	17	1	0		-	17	1	0	0	0	18	31
Columbia	83	Harden St MP: 0.105	Blanding St MP: 1.002		15	1	0		22,000	15	1	0	0	2	18	31
Columbia	102	Taylor St MP: 2.211	Harden St MP: 1		15	1	0		20,800	15	1	0	0	2	18	31
Columbia	177	Assembly St MP: 0.985	Senate St MP: 0.201		16	0	0		28,800	16	0	0	0	2	18	31
Columbia	HA 06	Harden St MP: 1.07	Colonial Dr MP: 1.07	Intersection Camera	17	1	0		-	17	1	0	0	0	18	31
Columbia	BU 03	Bull St MP: 0.318	Colonial Dr	Intersection Camera	16	0	0		46,700	16	0	0	0	2	18	31
Columbia	DS 13	Devine St MP: 23.27	Millwood Ave MP: 23.26	Fiber	15	1	0		27,300	15	1	0	0	2	18	31
District1	TS1558	US176 MP: 8.059	I-26 MP: 96.283	Broad River Rd @ I-26 W.B. Ramp / Food Lion	14	0	0	I	12,600	14	0	0	2	2	18	31
District1	TS1560	US176 MP: 5.82	S-234 MP: 1.589	Broad River @ Mt Vernon Church Rd / Freshley Mill Rd.	8	8	0		12,600	8	8	0	0	2	18	31

**TRAFFIC SIGNALS OPERATIONS PRIORITIZATION RANKINGS
COATS MPO**

Maintained By	Custom Identifier	Primary Route	Secondary Route	Comment	Cabinets Average Age in Years	Controllers Average Age in Years	Support Poles by Type	Proximity to Interstate	AADT	Cabinet Points	Controller Points	Pole Points	Interstate Points	AADT Points	Total Points	COATS MPO Ranking
Columbia	240	Harden St MP: 0.206	Greene St MP: 0.558		15	1	0		23,300	15	1	0	0	2	18	31
Columbia	TN 12	Two Notch Rd MP: 4.08	Convenant Rd	Fiber	15	1	0		17,400	15	1	0	0	2	18	31
District1	TS1587	S-827 MP: 1.38	S-151 MP: 1.001	Decker Blvd. @ Brookfield Rd.	8	8	0		24,100	8	8	0	0	2	18	31
District1	TS1414	S-34 MP: 19.634	I-26	Platt Springs Rd @ Lowes Entrance	11	5	0	I	6,200	11	5	0	2	0	18	31
Columbia	24	Assembly St MP: 0.096	Calhoun St MP: 0.425		15	1	0		20,200	15	1	0	0	2	18	31
District1	TS1539	US176 MP: 19.813	I-20 MP: 65.067	Broad River Rd. @ I-20 East Bound Ramp	14	0	0	I	103,500	14	0	0	2	2	18	31
Columbia	259	Blossom St MP: 0.468	Park St MP: 0.095		17	1	0		-	17	1	0	0	0	18	31
Columbia	262	Blossom St MP: 0.783	Sumter St MP: 0.509		17	1	0		-	17	1	0	0	0	18	31
Columbia	166	Gervais St MP: 1.619	Henderson St MP: 0.089		17	1	0		-	17	1	0	0	0	18	31
Columbia	BL 13	Sunset Dr MP: 1.276	Medical Park Rd MP: 0.31		18	0	0		6,400	18	0	0	0	0	18	31
Columbia	143	Assembly St MP: 0.781	Lady St MP: 0.589		16	0	0		22,800	16	0	0	0	2	18	31
Columbia	119	Harden St MP: 0.924	Hampton St MP: 1.098		15	1	0		23,300	15	1	0	0	2	18	31
Columbia	GV 02	Gervais St MP: 2.234	Oak St MP: 0.382		15	1	0		29,300	15	1	0	0	2	18	31
District1	TS1677	SC262 MP: 1.689	S-88 MP: 1.669	Leesburg Rd. @ Fairmont Dr.	16	0	0		25,900	16	0	0	0	2	18	31
Columbia	45	Bull St MP: 20.169	Richland St MP: 0.599		16	0	0		25,100	16	0	0	0	2	18	31
Columbia	113	Bull St MP: 20.564	Hampton St MP: 0.5		16	0	0		25,100	16	0	0	0	2	18	31
Columbia	363	Fort Jackson Blvd MP: 0.635	Kilbourne Rd MP: 0.11		17	1	0		10,500	17	1	0	0	0	18	31
District1	TS1655	SC83	0	Hardscrabble rd. @ Summit Parkway / Rice Creek Elem.	12	4	150000000		20,500	12	4	0	0	2	18	31
District1	TS1376	S-107 MP: 0.609	Old Bush River Rd	S-107 Old Bush River Rd. @ S-271 Coldstream Dr.	18	0	0		7,900	18	0	0	0	0	18	31
Columbia	TN 06	Two Notch Rd MP: 3.46	Chestnut St MP: 0.748	Fiber	15	1	0		14,100	15	1	0	0	2	18	31
Columbia	160	Gervais St MP: 1.016	Assembly St MP: 0.878		15	0	0		31,400	15	0	0	0	2	17	32
District1	TS1363	US1 MP: 31.145	SC2 MP: 3.894	Meeting St. @ State St.	14	1	0		13,400	14	1	0	0	2	17	32
Columbia	26	Sumter St MP: 1.914	Calhoun St MP: 0.633		17	0	0		8,700	17	0	0	0	0	17	32
Columbia	43	Richland St MP: 0.406	Sumter St MP: 1.816		16	1	0		8,700	16	1	0	0	0	17	32
Columbia	221	Harden St MP: 0.301	College St MP: 0.08		14	1	0		23,300	14	1	0	0	2	17	32
Columbia	DS 47	Garners Ferry Rd MP: 26.739	Greenlawn Rd	Fiber	14	1	0		49,700	14	1	0	0	2	17	32
Columbia	11	Bull St MP: 0.006	Elmwood Ave MP: 19.969	Inetrsection Camera	16	1	0		-	16	1	0	0	0	17	32
Columbia	81	Blanding St MP: 0.623	Henderson St MP: 0.228		16	1	0		2,900	16	1	0	0	0	17	32
District1	TS1534	US176 MP: 20.795	S-287	Broad River Rd. @ Arrowood Dr / Means	14	1	0		25,700	14	1	0	0	2	17	32
District1	TS1624	SC12 MP: 0.032	Forest Dr MP: 0.142	Forest Dr @ Walmart Ent	13	2	0		23,400	13	2	0	0	2	17	32
District1	TS1667	S-52 MP: 9.374	I-77 MP: 21.571	Killian Rd. @ I-77 North Bound Ramp	0	13	0	I	34,700	0	13	0	2	2	17	32
District1	TS1536	US176 MP: 20.272	S-1377	US-176 Broad River @ S-1377 Omarest	15	0	0		37,600	15	0	0	0	2	17	32
District1	TS1666	S-52 MP: 9.562	I-77 MP: 21.536	S-52 Killian Rd. @ I-77 South Bound Ramp	13	0	0	I	15,300	13	0	0	2	2	17	32
District1	TS1338	SC60 MP: 2.435	S-175 MP: 0.001	Lake Murray Blvd. @ Irmo Dr. Updated 6/13/2019	14	1	0		15,400	14	1	0	0	2	17	32
Columbia	108	Hampton St MP: 1.03	Park St MP: 1.031		16	1	0		9,300	16	1	0	0	0	17	32
Columbia	KR 14	Kilbourne Rd MP: 2.598	Deveraux Rd		17	0	0		1,700	17	0	0	0	0	17	32
Columbia	GV 03	Gervais St MP: 8.66	Millwood Ave MP: 21.85		15	0	0		29,300	15	0	0	0	2	17	32
District1	TS1690	US21 MP: 7.707	S-218 MP: 0.003	North Main St. @ Wilkes Rd. Updated 8/8/2019	16	1	0		8,200	16	1	0	0	0	17	32
District1	TS1739	US1 MP: 10.64	Rabon Rd MP: 2.161	Two Notch Rd @ Rabon Rd	12	3	0		38,300	12	3	0	0	2	17	32
District1	TS1614	US321 MP: 6.66	S-511 MP: 1.378	Fairfield Rd. @ Buckner / Mason	17	0	0		8,800	17	0	0	0	0	17	32
District1	TS1279	US21 MP: 15.564	US176	Charleston Hwy. @ Sandhills Parkway	10	4	0		33,000	10	4	0	0	2	16	33
Columbia	93	Taylor St MP: 1.329	Main St MP: 0.491		13	1	0		20,800	13	1	0	0	2	16	33
Columbia	96	Bull St MP: 20.464	Taylor St MP: 1.627		16	0	0		-	16	0	0	0	0	16	33
District1	TS1557	US76 MP: 6.793	US176 MP: 10.9630002212524	Broad River @ Koon Rd.	14	0	0		20,000	14	0	0	0	2	16	33
District1	TS1681	S-1051 MP: 2.211	S-1050 MP: 1.219	Longtown Rd. @ Lee Rd. / Longreen Rd.	14	0	0		12,800	14	0	0	0	2	16	33
Columbia	63	Laurel St MP: 0.96	Pickens St MP: 2.081		16	0	0		4,600	16	0	0	0	0	16	33
Columbia	79	Bull St MP: 20.368	Blanding St MP: 0.428		15	1	0		-	15	1	0	0	0	16	33
Columbia	253	Devine St MP: 1.616	Harden St MP: 0.101		13	1	0		13,600	13	1	0	0	2	16	33
District1	TS1538	US176 MP: 19.993	S-2590	Broad River Rd. @ Long Creek Dr.	14	0	0		37,600	14	0	0	0	2	16	33
District1	TS1733	US1 MP: 9.202	S-235	Two Notch Rd. @ Nates RR	7	7	0		31,500	7	7	0	0	2	16	33
Columbia	68	Harden St MP: 0.198	Laurel St MP: 0.486		15	1	0		-	15	1	0	0	0	16	33

**TRAFFIC SIGNALS OPERATIONS PRIORITIZATION RANKINGS
COATS MPO**

Maintained By	Custom Identifier	Primary Route	Secondary Route	Comment	Cabinets Average Age in Years	Controllers Average Age in Years	Support Poles by Type	Proximity to Interstate	AADT	Cabinet Points	Controller Points	Pole Points	Interstate Points	AADT Points	Total Points	COATS MPO Ranking
District1	TS1528	S-59 MP: 1.71	Muller Rd MP: 1.711	Blythewood Rd. @ Muller Rd.	9	7	0		1,150	9	7	0	0	0	16	33
District1	TS1544	US176 MP: 18.926	S-2181 MP: 0.002	Broad River Rd. @ St Andrews Pkwy	14	0	0		37,600	14	0	0	0	2	16	33
District1	TS1325	SC12 MP: 1.38	SC35 MP: 5.101	Jarvis Klapman Blvd. @ SC-35 12th St. Upgraded 7/25/2019	14	0	0		13,200	14	0	0	0	2	16	33
District1	TS1740	US1 MP: 10.9	Windsor Lake Blvd	Two Notch Rd. @ Windsor Lake / Greengate RR	12	2	0		38,300	12	2	0	0	2	16	33
District1	TS1567	S-31 MP: 0.057	I-26 MP: 107.458	Bush River Rd. @ I-26 E.B. Ramp	12	0	0	I	24,900	12	0	0	2	2	16	33
District1	TS1542	US176 MP: 19.319	S-927 MP: 0.529	Broad River Rd. @ Seminole Rd / Young Dr	14	0	0		37,600	14	0	0	0	2	16	33
District1	TS1537	US176 MP: 20.104	S-1380 MP: 0.7	Broad River @ Dutch Square Center	14	0	0		37,600	14	0	0	0	2	16	33
District1	TS1709	S-1041 MP: 3.881	S-1051 MP: 5.29	Rimer Pond Rd. @ Longtown / Round Top School	12	4	0		6,100	12	4	0	0	0	16	33
District1	TS1260	S-273 MP: 0.06	S-1241	Bush River @ Zimalcrest / Wal-Mart	14	0	0		18,900	14	0	0	0	2	16	33
District1	TS1646	US76 MP: 33.582	US378 MP: 14.1320007324219	Garners Ferry Rd @ Horrel Hill Rd \ Harmon Rd	14	0	0		25,300	14	0	0	0	2	16	33
Lexington	TS1473	US378 MP: 16.365	0	US-378 Sunset Blvd. @ Coventry Dr. / Home Depot	0	13	0		32,500	0	13	0	0	2	15	34
Columbia	99	Taylor St MP: 1.922	Barnwell St MP: 0.789		15	0	0		-	15	0	0	0	0	15	34
District1	TS1503	S-63 MP: 0.762	S-2214	Alpine Rd @ Polo Rd.	14	1	0		8,700	14	1	0	0	0	15	34
District1	TS1138	S-35 MP: 1.622	S-130 MP: 2.29	Knights Hill Rd. @ Springdale Dr.	14	1	0		1,750	14	1	0	0	0	15	34
District1	TS1518	SC48 MP: 4.644	S-1568 MP: 0.132	Bluff Rd. @ Blair Rd.	11	2	0		23,400	11	2	0	0	2	15	34
Columbia	BR 05	River Dr MP: 22.947	Northwood St MP: 0.323		15	0	0		6,200	15	0	0	0	0	15	34
Columbia	94	Taylor St MP: 1.432	Sumter St MP: 1.513		12	1	0		20,800	12	1	0	0	2	15	34
Columbia	111	Hampton St MP: 0.306	Sumter St MP: 1.415		15	0	0		8,700	15	0	0	0	0	15	34
Columbia	DS 34	Garners Ferry Rd MP: 25.328	Old Woodlands Rd	Fiber	12	1	0		46,000	12	1	0	0	2	15	34
District1	TS1273	US321 MP: 19.2100006103516	S-165	Charleston Hwy @ North Eden	8	5	0		22,000	8	5	0	0	2	15	34
District1	TS1483	SC35 MP: 2.478	Goodley St	12th St @ Goodley Street	11	4	0		12,000	11	4	0	0	0	15	34
Columbia	75	Blanding St MP: 0.036	Assembly St MP: 0.391		12	1	0		20,200	12	1	0	0	2	15	34
Columbia	258	Blossom St MP: 0.368	Lincoln St MP: 0.898		14	1	0		-	14	1	0	0	0	15	34
Columbia	59	Laurel St MP: 1.359	Main St MP: 0.295		14	1	0		4,600	14	1	0	0	0	15	34
Columbia	264	Blossom St MP: 0.978	Bull St MP: 0.009		14	1	0		-	14	1	0	0	0	15	34
District1	TS1641	US76 MP: 28.198	US378 MP: 8.7479999542236	Garners Ferry Rd @ Hazelwood Rd	12	1	0		33,400	12	1	0	0	2	15	34
Lexington	TS1309	US378 MP: 16.095	SC6 MP: 7.9650006866455	US-378 Columbia Ave. @ Northwood Dr.	0	13	0		44,000	0	13	0	0	2	15	34
District1	TS1502	S-63 MP: 0.671	I-20 WB MP: 76.139	Alpine @ I-20 WB Exit	6	5	0	I	50,400	6	5	0	2	2	15	34
District1	TS1551	US176 MP: 14.34	S-1944	Broad River Rd. @ Lykes / Dutchman	13	0	0		13,300	13	0	0	0	2	15	34
District1	TS1662	S-129 MP: 1.355	S-1058	Kennerly Rd. @ Hollingshed Rd. / Firetower Rd.	13	0	0		15,300	13	0	0	0	2	15	34
Columbia	272	Blossom St MP: 0.151	Harden St		13	1	0		-	13	1	0	0	0	14	35
District1	TS1319	US378 MP: 9.232	SC113	US 378 Columbia Ave @ S-113 Counts Ferry/Spring Hill Rd	1	11	0		14,500	1	11	0	0	2	14	35
Columbia	MS 05	Main St MP: 3.186	River Dr MP: 23.493	Fiber	11	1	0		13,000	11	1	0	0	2	14	35
District1	TS1519	SC48 MP: 5.365	SC768 MP: 4.875	Bluff Rd. @ S. Beltline Blvd.	8	4	0		23,400	8	4	0	0	2	14	35
Columbia	TR 18	Trenholm Rd MP: 5.984	Brennen Rd MP: 0.08		3	9	0		14,400	3	9	0	0	2	14	35
District1	TS1718	S-53 MP: 4.138	Spears Creek Church Rd MP: 4.138	Spears Creek Rd. @ Woodcreek Farms / Earth Rd.	7	7	0		11,800	7	7	0	0	0	14	35
District1	TS1326	SC12 MP: 0.961	S-313 MP: 0.489	Jarvis Klapman Blvd. @ Brown St.	9	3	0		13,200	9	3	0	0	2	14	35
District1	TS1785	US21 MP: 18.558	S-59	Wilson Blvd. @ Blythewood Rd. / Langford Rd.	14	0	0		4,100	14	0	0	0	0	14	35
District1	TS1426	S-36 MP: 0.202	I-26 MP: 106.274	St Andrews Rd. @ I-26 East Bound Ramp	5	5	0	I	22,700	5	5	0	2	2	14	35
Lexington	TS1312	US378 MP: 15.317	S-138	Columbia Ave. @ Reed St. / West Butler Rd.	0	12	0		30,000	0	12	0	0	2	14	35
District1	TS1869	S-5 MP: 0.401	S-89 MP: 0.41	N.Main @ Hampton	7	7	0		150	7	7	0	0	0	14	35
Lexington	TS1239	US1 MP: 19.261	US378 MP: 14.8209996795654	W. Main St. @ K-Mart / Lexington Med. Center	0	12	0		35,300	0	12	0	0	2	14	35
Columbia	MS 06	Main St	Anthony Ave MP: 0.168	Fiber	11	1	0		13,000	11	1	0	0	2	14	35
District1	TS1362	US1 MP: 31.216	US378 MP: 26.927	Meeting St. @ Sunset Blvd.	11	0	0		13,400	11	0	0	0	2	13	36
District1	TS1578	S-52 MP: 7.89	S-1051 MP: 0.702	Clemson Rd. @ Longtown Rd. Revised6/17/2020	11	0	0		26,200	11	0	0	0	2	13	36
District1	TS1341	SC60 MP: 0.488	Lake Murray Blvd MP: 0.488	North Lake Fire Station	11	0	0		15,400	11	0	0	0	2	13	36
District1	TS1665	S-52 MP: 9.763	Killian Rd MP: 9.765	Killian Rd. @ Walmart	13	0	0		-	13	0	0	0	0	13	36
District1	TS1577	S-52 MP: 6.444	S-83 MP: 4.986	S-52 Clemson Rd. @ S-83 Hardscrabble Rd.	0	11	0		19,500	0	11	0	0	2	13	36
District1	TS1487	SC35 MP: 0.289	I-77	12th St Ext @ I-77 Southbound Ramp	7	2	0	I	12,200	7	2	0	2	2	13	36
District1	TS1732	US1 MP: 9	I-20 MP: 74.17	Two Notch Rd. @ I-20 W.B. / Horseshoe Dr. / Berkshire	7	2	0	I	31,500	7	2	0	2	2	13	36
District1	TS1702	SC277 MP: 7.14	S-1036 MP: 0.485	Parklane Rd. @ SC-277 S.B. Bound Exit Ramp	9	1	0		60,200	9	1	0	0	2	12	37

**TRAFFIC SIGNALS OPERATIONS PRIORITIZATION RANKINGS
COATS MPO**

Maintained By	Custom Identifier	Primary Route	Secondary Route	Comment	Cabinets Average Age in Years	Controllers Average Age in Years	Support Poles by Type	Proximity to Interstate	AADT	Cabinet Points	Controller Points	Pole Points	Interstate Points	AADT Points	Total Points	COATS MPO Ranking
District1	TS1729	Two Notch Rd MP: 8.17	Parklane Rd MP: 2.17	Two Notch Rd @ Parklane / Decker Blvd.	5	5	0		19,500	5	5	0	0	2	12	37
Columbia	BL 04	Sunset Dr MP: 0.418	Abingdon Rd		0	10	0		17,700	0	10	0	0	2	12	37
District1	TS1425	S-36	S-42	St. Andrews @ Fernandina Rd./Burning Tree Rd.	6	4	0		22,700	6	4	0	0	2	12	37
District1	TS1211	US1 MP: 28.888	S-285 MP: 1.23	Augusta Hwy. @ Hook St.	9	1	0		12,900	9	1	0	0	2	12	37
Columbia	388	George Rodgers Blvd	Shop Rd MP: 0.007	Fiber	12	0	0		7,300	12	0	0	0	0	12	37
District1	TS1500	S-63 MP: 0.473	S-1201 MP: 2.756	Alpine Rd @ Faraway Dr/ New Way Rd	5	5	0		12,800	5	5	0	0	2	12	37
District1	TS1520	SC48 MP: 5.667	I-77 MP: 5.368	Bluff Rd. @ I-77 N.B. Ramp	5	5	0	I	-	5	5	0	2	0	12	37
District1	TS1728	US1 MP: 7.923	Two Notch Rd MP: 7.923	Columbia Mall / Advance Auto Parts	5	5	0		19,500	5	5	0	0	2	12	37
District1	TS1735	US1 MP: 9.614	I-77	Two Notch Rd @ I-77 SB	8	0	0	I	31,500	8	0	0	2	2	12	37
District1	TS1600	Farrow Rd MP: 10.671	Longtown Rd	SC-555 Farrow Rd @ S-1051 Longtown Rd	5	5	0		13,500	5	5	0	0	2	12	37
District1	TS1778	US21 MP: 8.351	S-3967	Wilson Blvd @ Meadowlakes / Beckham	8	2	0		16,600	8	2	0	0	2	12	37
District1	TS1532	US176 MP: 18.172	Beatty Rd	Broad River Rd @ Beatty Rd	5	5	0		17,300	5	5	0	0	2	12	37
District1	TS1734	US1 MP: 9.44	S-1705 MP: 0.002	Two Notch Rd. @ Daulton Dr. / Oakcrest	8	2	0		31,500	8	2	0	0	2	12	37
District1	TS1746	US1 MP: 13.753	S-2033 MP: 0.442	Two Notch Rd. @ Sparkleberry Ln. RR	7	2	0		36,900	7	2	0	0	2	11	38
District1	TS1724	US1 MP: 7.06	S-64 MP: 1.328	US -1 Two Notch Rd. @ S-64 Arcadia Lakes / Risly Rd	7	2	0		19,500	7	2	0	0	2	11	38
Columbia	8	Elmwood Ave MP: 2.661	Main St MP: 2.661	Intersection Camera	10	1	0		-	10	1	0	0	0	11	38
District1	TS1617	S-218 MP: 1.301	SC277 MP: 4.295	Fontaine Rd. @ North Bound Ramp Fontain Buss Park	8	1	0		15,600	8	1	0	0	2	11	38
Columbia	MR 02	Monticello Rd MP: 0.19	Duke Ave MP: 1.797		9	0	0		12,800	9	0	0	0	2	11	38
District1	TS1429	S-36 MP: 0.901	S-173 MP: 1.31	S-36 St. Andrews Rd. @ S-173 Sidney Dr.	5	4	0		13,500	5	4	0	0	2	11	38
District1	TS1488	SC35 MP: 0.086	I-77	12th St Ext @ I-77 Northbound Ramp	7	0	0	I	12,200	7	0	0	2	2	11	38
District1	TS1546	US176 MP: 17.914	0	Broad River Rd. @ Huffstettler Dr.	9	0	0		17,300	9	0	0	0	2	11	38
District1	TS1701	S-1036 MP: 0.729	SC277 MP: 7.094	Parklane @ SC-277 N.B Exit Ramp	8	1	0		60,200	8	1	0	0	2	11	38
District1	TS1695	S-1677 MP: 1.152	S-1975 MP: 1.43	O'Neil Court Ext. @ Hunt Club Rd.	4	7	0		8,300	4	7	0	0	0	11	38
District1	TS1428	S-36 MP: 0.581	S-946	St. Andrews Rd. @ Ashland Rd.	6	3	0		22,700	6	3	0	0	2	11	38
District1	TS1779	US21 MP: 10.252	S-34 MP: 1.145	Wilson Blvd @ Pisgah Church Rd.	10	0	0		8,500	10	0	0	0	0	10	39
Columbia	391	SC12	S-168	Taylor Street @ Lincoln St Hawk System	8	0	0		12,500	8	0	0	0	2	10	39
Lexington	TS1454	US378 MP: 22.999	S-1209 MP: 0.002	Sunset Blvd. @ Fairlane Dr. / Summerplace Dr.	4	4	0		28,600	4	4	0	0	2	10	39
District1	TS1588	S-151 MP: 0.838	S-1201 MP: 0.488	Decker Blvd. @ Faraway Dr. / Crossfield Rd.	8	0	0		18,800	8	0	0	0	2	10	39
District1	TS1213	US1 MP: 28.652	S-30	Augusta Rd. @ Dreher Rd. / Leaphart Rd.	8	0	0		33,300	8	0	0	0	2	10	39
District1	TS1397	S-671 MP: 1.43	I-26 MP: 104.197	I-26 East Bound Ramp @ S-671 Piney Grove Rd.	3	3	0	I	115,100	3	3	0	2	2	10	39
District1	TS1720	S-36 MP: 0.149	S-2016 MP: 0.55	St Andrews Rd. @ Kay St.	5	5	0		3,700	5	5	0	0	0	10	39
District1	TS1437	S-36 MP: 4.674	Woodstream Rd	St. Andrews Rd. @ Pebble Gate Rd. / Woodstream Rd. RR	4	4	0		19,500	4	4	0	0	2	10	39
District1	TS1445	US378 MP: 25.521	S-35	US-378 Sunset Blvd. @ S-35 12th St. / S-69 Seminole Dr.	5	5	0		1,550	5	5	0	0	0	10	39
District1	TS1516	SC48 MP: 3.379	Berea Rd MP: 0.07	Bluff Rd. @ Berea Rd. / National Guard Rd.	8	0	0		23,400	8	0	0	0	2	10	39
Lexington	TS1468	US378 MP: 17.675	Palmetto Park Blvd	Sunset Blvd. @ Palmetto Park Blvd.	4	4	0		41,700	4	4	0	0	2	10	39
Lexington	TS1467	US378 MP: 17.812	S-106 MP: 0.002	Sunset Blvd. @ Mineral Springs Rd.	4	4	0		41,700	4	4	0	0	2	10	39
District1	TS1435	S-36 MP: 4.09	St. Andrews Rd	S-36 St. Andrews Rd. @ Irmo High School RR	4	3	0		19,400	4	3	0	0	2	9	40
District1	TS1594	US76 MP: 3.41	S-385	Dutch Fork @ Rauch-Metz Rd	7	0	0		24,200	7	0	0	0	2	9	40
District1	TS1671	SC60 MP: 1.346	Parkridge Dr MP: 0.63	Lake Murray Blvd. @ Parkridge Dr.	9	0	0		10,900	9	0	0	0	0	9	40
Lexington	TS1447	US378 MP: 24.424	S-1225	Sunset Blvd @ Klampman Rd. /Cougar Drive	5	2	0		23,200	5	2	0	0	2	9	40
District1	TS1698	S-1036 MP: 1.777	S-1092	Parklane @ Claudia Dr. / Moonglo	5	2	0		21,100	5	2	0	0	2	9	40
District1	TS1356	SC302 MP: 10.85	SC6 MP: 19.439	Edmund Hwy @ South Lake Dr	7	0	0		18,300	7	0	0	0	2	9	40
Lexington	TS1463	US378 MP: 20.981	S-68	Sunset Blvd. @ Corley Mill Rd./ Ginny Ln.	7	0	0		33,800	7	0	0	0	2	9	40
District1	TS1389	S-70 MP: 7.932	S-204 MP: 6.21	Old Two Notch Rd. @ Longs Pond Rd.	5	4	0		8,400	5	4	0	0	0	9	40
District1	TS1726	US1 MP: 8.634	O'Neil Ct MP: 0.439	Two Notch Rd. @ O'Neil Court	7	0	0		18,200	7	0	0	0	2	9	40
District1	TS1427	S-36 MP: 0.368	S-1791	St. Andrews Rd. @ Jamil Rd.	5	2	0		22,700	5	2	0	0	2	9	40
District1	TS1700	S-1036 MP: 0.771	S-2873	Parklane Rd. @ Brighton Hill Rd.	9	0	0		11,500	9	0	0	0	0	9	40
District1	TS1672	SC60 MP: 0.93	S-670	Lake Murray Blvd. @ Kinley Rd.	9	0	0		10,900	9	0	0	0	0	9	40
District1	TS1719	S-53 MP: 5.136	0	Spears Creek Church Rd. @ I-20 E.B Exit Ramp	9	0	0		11,800	9	0	0	0	0	9	40
District1	TS1727	US1 MP: 7.79	Columbia Mall Blvd	Two Notch Rd. @ Columbia Mall Blvd.	2	5	0		19,500	2	5	0	0	2	9	40
District1	TS1395	S-671 MP: 1.67	S-42	Piney Grove @ Fernandina Rd.	4	4	0		11,600	4	4	0	0	0	8	41

**TRAFFIC SIGNALS OPERATIONS PRIORITIZATION RANKINGS
COATS MPO**

Maintained By	Custom Identifier	Primary Route	Secondary Route	Comment	Cabinets Average Age in Years	Controllers Average Age in Years	Support Poles by Type	Proximity to Interstate	AADT	Cabinet Points	Controller Points	Pole Points	Interstate Points	AADT Points	Total Points	COATS MPO Ranking
District1	TS1390	S-77 MP: 13.9	S-278 MP: 3.151	Old Two Notch Rd. @ Calks Ferry Rd.	8	0	0		3,000	8	0	0	0	0	8	41
District1	TS1415	S-34 MP: 18.63	S-1910	Platt Springs @ McLee-Kyzer	8	0	0		6,200	8	0	0	0	0	8	41
District1	TS1522	SC48 MP: 6.643	S-50	Bluff Rd. @ Atlas Rd.	8	0	0		11,500	8	0	0	0	0	8	41
District1	TS1670	Killian Rd W MP: 8.682	0	S-52 Killian Rd @ Nuttall Oak Dr	3	3	0		34,700	3	3	0	0	2	8	41
District1	TS1527	S-59 MP: 0.458	I-77 MP: 27.315	Blythewood Rd. @ I-77 N.B. Exit Ramp	2	2	0	I	19,400	2	2	0	2	2	8	41
District1	TS1627	SC12 MP: 5.547	S-33 MP: 5.138	Forest Dr @ Trenholm Dr	4	2	0		27,300	4	2	0	0	2	8	41
District1	TS1605	SC555 MP: 8.319	I-77	Farrow Rd. @ I-77 NB Off Ramp	3	3	0	I	-	3	3	0	2	0	8	41
District1	TS1697	S-1036 MP: 1.901	S-1677	Parklane Rd. @ O'Neil Ct. / Columbia Mall Exit	5	1	0		21,100	5	1	0	0	2	8	41
District1	TS1333	Charleston Hwy MP: 0.068	0	US 21/176/321 Knox Abbott Dr @ US 21 Charleston Hwy	4	4	0		8,100	4	4	0	0	0	8	41
Lexington	TS1461	US378 MP: 21.374	I-20 MP: 61.224	Sunset Blvd. @ I-20 East Bound Exit Ramp	4	0	0	I	44,700	4	0	0	2	2	8	41
District1	TS1218	US1 MP: 26.765	S-71 MP: 0.602	Augusta Rd. @ Wattling Rd. / Woodberry Rd. RR	5	3	0		11,600	5	3	0	0	0	8	41
District1	TS1517	SC48 MP: 3.999	S-1536 MP: 0.299	Bluff Rd. @ Idlewild Rd./ Stock Rd.	5	1	0		23,400	5	1	0	0	2	8	41
District1	TS1504	S-63 MP: 1.679	S-1196 MP: 0.819	Alpine Rd @ Windsor Lake Blvd	8	0	0		8,700	8	0	0	0	0	8	41
District1	TS1565	S-31 MP: 0.61	S-287 MP: 1.448	Bush River Rd @ Arrowood Dr. / Dutch Sq. Blvd	5	1	0		28,600	5	1	0	0	2	8	41
District1	TS1396	S-671 MP: 1.525	I-26 MP: 104.232	Piney Grove @ I-26 West Bound Ramp	2	2	0	I	115,100	2	2	0	2	2	8	41
District1	TS1555	US76 MP: 8.916	US176 MP: 13.0860003662109	US-76/176 Broad River Rd. @ Columbiana Dr. Rebuilt 5/16/17 permit # 200034048	3	3	0		24,000	3	3	0	0	2	8	41
District1	TS1246	US1 MP: 16.001	0	Us 1 Augusta Hwy & Lexington High School	3	3	0		14,700	3	3	0	0	2	8	41
District1	TS1706	Percival Rd MP: 14.14	Clemson Rd	Percival Rd. @ Clemson Rd.	8	0	0		11,200	8	0	0	0	0	8	41
District1	TS1352	S-204 MP: 6.795	S-1823 MP: 0.05	Longs Pond @ Blackjack Oak-Love Travel Plaza	7	0	0		10,600	7	0	0	0	0	7	42
District1	TS1780	US21 MP: 14.91	S-1694 MP: 0.006	Wilson Blvd @ Turkey Farm Rd./ Blythwood Crossings	7	0	0		8,500	7	0	0	0	0	7	42
District1	TS1696	S-244 MP: 1.43	S-498	Old Tamah Rd. @ Koon Rd.	7	0	0		3,400	7	0	0	0	0	7	42
District1	TS1757	S-33 MP: 1.373	S-1677 MP: 0.624	Trenholm Extension @ O'Neil Ct.	5	2	0		7,800	5	2	0	0	0	7	42
District1	TS1317	US378 MP: 11.597	S-204 MP: 1.83	US-378 Columbia Ave. @ S-204 St. Peters Church Rd. / Charter Oaks Rd.	3	2	0		14,500	3	2	0	0	2	7	42
District1	TS1606	SC555 MP: 7.772	S-1036 MP: 0.005	Farrow Rd. @ Parklane Rd./ Carolina Research Park	7	0	0		-	7	0	0	0	0	7	42
District1	TS1651	S-83 MP: 7.062	S-1048 MP: 1.267	Hardscrabble Rd. @ Sloan Rd.	0	5	0		19,400	0	5	0	0	2	7	42
District1	TS1243	US1 MP: 16.19	S-204 MP: 2.75	US-1 Augusta Hwy. @ Pisgah Church Rd./ Charter Oak Rd.	5	0	0		14,700	5	0	0	0	2	7	42
District1	TS1742	US1 MP: 11.489	Spring Valley Rd	Two Notch Rd. @ Spring Valley Entrance	2	2	0		38,300	2	2	0	0	2	6	43
District1	TS1783	Wilson Blvd MP: 12.416	S-52 MP: 10.959	Wilson Blvd & Killian Rd Turned on 6/21/2017. Final Inspection 7/13/2017	3	3	0		8,500	3	3	0	0	0	6	43
District1	TS1668	S-52 MP: 9.165	Bridgeberry Lane	Killian Rd @ Bridgeberry Lane	4	0	0		34,700	4	0	0	0	2	6	43
District1	TS1383	S-244 MP: 2.604	S-104 MP: 6.478	Old Orangeburg Rd. @ Old Barnwell Rd.	3	3	0		7,600	3	3	0	0	0	6	43
District1	TS1736	US1 MP: 9.725	I-77 MP: 17.45	Two Notch Rd. @ I-77 N.B. Ramp	1	1	0	I	61,200	1	1	0	2	2	6	43
District1	TS1595	SC6 MP: 1.224	S-957	SC-6 Dreher Shoals Rd @ S-957 Farming Creek rd	4	0	0		13,700	4	0	0	0	2	6	43
District1	TS1561	Broad River Rd MP: 5.732	0	US-176 Broad River Rd @ Portrait Hill/Chapin Middle School	2	2	0		12,600	2	2	0	0	2	6	43
Lexington	TS1448	US378 MP: 24.083	S-285	Sunset Blvd @ North Hook Ave.	2	2	0		28,000	2	2	0	0	2	6	43
Lexington	TS1450	US378 MP: 23.764	S-1814	Sunset Blvd. @ Chris Dr./McSwain Dr.	2	2	0		28,000	2	2	0	0	2	6	43
District1	TS1575	S-52 MP: 4.262	S-266 MP: 0.95	Clemson Rd. @ Rhame Rd. / N.Springs	3	1	0		30,800	3	1	0	0	2	6	43
District1	TS1593	US76 MP: 4.8	S-286 MP: 1.13	US-76 Dutch Fork Rd. @ Bickley Rd. / A.J. Amick	2	2	0		24,200	2	2	0	0	2	6	43
District1	TS1647	US76 MP: 36.273	US378 MP: 16.8229988098145	Garners Ferry Rd @ McEntire Air National Guard	2	2	0		19,300	2	2	0	0	2	6	43
District1	TS1543	US176 MP: 19.209	S-1876	Broad River @ Rushmore Rd.	4	0	0		37,600	4	0	0	0	2	6	43
District1	TS1402	SC602 MP: 10.69	S-400 MP: 0.88	SC-602 Platt Springs Rd. @ S-400 D Ave./ Charleston Hwy	3	3	0		10,500	3	3	0	0	0	6	43
District1	TS1602	SC555 MP: 9.235	S-83 MP: 7.786	Farrow Rd. @ Hardscrabble Rd.	4	0	0		32,900	4	0	0	0	2	6	43
District1	TS1685	SC215 MP: 1.892	I-20 MP: 68.23	Montecello Rd. @ I-20 West Bound Ramp	2	2	0	I	10,200	2	2	0	2	0	6	43
Lexington	TS1455	US378 MP: 22.841	S-865 MP: 0.62	Sunset Blvd @ Hebron Rd.	2	2	0		28,600	2	2	0	0	2	6	43
Lexington	TS1449	US378 MP: 23.889	S-1854 MP: 0.002	Sunset Blvd. @ Whippoorwill Dr.	2	2	0		28,000	2	2	0	0	2	6	43
District1	TS1607	SC555 MP: 7.295	S-34	Farrow @ Pisgah Church Rd. Rebuilt 9/6/2018	2	2	0		24,300	2	2	0	0	2	6	43
Lexington	TS1446	US378 MP: 24.61	S-644 MP: 0.6	Sunset Blvd. @ Hummingbird Dr. / Arehart Rd.	2	2	0		23,200	2	2	0	0	2	6	43
District1	TS1398	S-671 MP: 1.279	S-1792	Piney Grove Rd. @ Jamil Rd./Bowers Parkway.	3	3	0		11,600	3	3	0	0	0	6	43
District1	TS1347	S-30 MP: 2.101	S-106 MP: 5.649	Leaphart @ Mineral Springs	0	6	0		6,500	0	6	0	0	0	6	43
District1	TS1335	SC60 MP: 3.25	S-1675	SC-60 Lake Murray @ College St.	2	2	0		26,300	2	2	0	0	2	6	43
District1	TS1634	SC12 MP: 3.961	S-93 MP: 1.17	Forest Dr @ Harrison Rd\Richland Mall Entrance	2	2	0		19,800	2	2	0	0	2	6	43
District1	TS1745	US1 MP: 13.518	Rivkin Blvd	Two Notch Rd. @ Rivkin / Walmart	0	3	0		36,900	0	3	0	0	2	5	44

**TRAFFIC SIGNALS OPERATIONS PRIORITIZATION RANKINGS
COATS MPO**

Maintained By	Custom Identifier	Primary Route	Secondary Route	Comment	Cabinets Average Age in Years	Controllers Average Age in Years	Support Poles by Type	Proximity to Interstate	AADT	Cabinet Points	Controller Points	Pole Points	Interstate Points	AADT Points	Total Points	COATS MPO Ranking
District1	TS1569	S-52 MP: 0.242	I-20 MP: 79.843	Clemson Rd. @ I-20 East Bound Ramp	1	0	0	I	80,900	1	0	0	2	2	5	44
District1	TS1258	S-273 MP: 0.745	I-20	Bush River Rd. @ I-20 East Bound Ramp	1	0	0	I	18,900	1	0	0	2	2	5	44
District1	TS1221	US1 MP: 25.039	S-386 MP: 1.678	Augusta Hwy. @ St. David Church Rd./Oak Dr.	3	0	0		28,200	3	0	0	0	2	5	44
District1	TS1436	S-36 MP: 4.407	S-174 MP: 1.418	St. Andrews Rd. @ Wescott Rd.	0	3	0		19,400	0	3	0	0	2	5	44
District1	TS1731	US1 MP: 8.816	I-20	Two Notch Rd. @ I-20 E.B. Ramp / Firelane	0	1	0	I	32,300	0	1	0	2	2	5	44
District1	TS1704	SC12 MP: 8.47	S-2150 MP: 0.182	Percival Rd. @ Morninglo / Boyden	1	1	0		14,400	1	1	0	0	2	4	45
District1	TS1423	0	0	SC-6 S. Lake Dr @ Bethany Church/Pleasantview	2	2	0		-	2	2	0	0	0	4	45
District1	TS1777	US21 MP: 15.044	S-2885 MP: 0.005	US-21 Wilson Blvd @ S-2885 Community Rd	1	1	0		14,300	1	1	0	0	2	4	45
District1	TS1590	US76 MP: 6.115	US176 MP: 10.327	Dutch Fork Rd @ Broad River Rd	1	1	0		20,000	1	1	0	0	2	4	45
District1	TS1708	S-424 MP: 1.771	S-1293	Rabon Rd. @ Flora Dr.	3	1	0		9,000	3	1	0	0	0	4	45
District1	TS1145	SC97 MP: 18.891	S-130 MP: 3.527	Liberty Hill Rd. @ Springdale / Boykin Rd.	2	2	0		3,700	2	2	0	0	0	4	45
District1	TS1653	S-83 MP: 4.156	S-1050 MP: 0.008	Hardscrabble Rd. @ Lee Rd.	1	1	0		26,100	1	1	0	0	2	4	45
District1	TS1329	US21 MP: 21.001	US176	Knox Abbott Dr. @ Axtel Dr.	1	1	0		23,600	1	1	0	0	2	4	45
District1	TS1330	US21 MP: 20.801	US176	Knox Abbott Dr. @ State St.	1	1	0		23,600	1	1	0	0	2	4	45
District1	TS1416	SC6 MP: 12.007	S-648	SC- S. Lake Dr @ S-648 Community Dr	1	1	0		25,300	1	1	0	0	2	4	45
District1	TS1887	SC120 MP: 12.409	S-442 MP: 0.844	Pinewood Rd. @ Stadium Rd.	2	2	0		7,600	2	2	0	0	0	4	45
District1	TS1712	SC768 MP: 1.91	S-1248 MP: 1.06	Shop Rd. @ Pineveiw Rd	1	1	0		14,500	1	1	0	0	2	4	45
District1	TS1208	S-378 MP: 0.646	S-288	S-378 John Hardee Expy @ S-288 Lexington Dr	1	1	0		13,500	1	1	0	0	2	4	45
District1	TS1255	S-273 MP: 1.5	S-946 MP: 0.739	Bush River Rd. @ Ashland Rd. / Marydale Ln.	2	2	0		11,300	2	2	0	0	0	4	45
Columbia	358	Harbison Blvd	Park Terrace Dr	Fiber	0	2	0		32,600	0	2	0	0	2	4	45
District1	TS1332	US21 MP: 19.953	US176	Knox Abbott Dr. @ 12th St.	1	1	0		23,600	1	1	0	0	2	4	45
Lexington	TS1462	US378 MP: 21.165	I-20 MP: 61.197	US-378 Sunset Blvd. @ I-20 West Bound Ramp	0	0	0	I	33,800	0	0	0	2	2	4	45
District1	TS1737	US1 MP: 9.97	S-33	Two Notch Rd. @ Trenholm / Grampian Hills	1	1	250		38,300	1	1	0	0	2	4	45
District1	TS1373	SC6 MP: 0.3	S-175 MP: 2.28	SC-6 North Lake drive @ Irmo Drive Rebuilt 7/2/2019	1	1	0		13,300	1	1	0	0	2	4	45
District1	TS1506	S-49 MP: 1.262	S-50 MP: 2.312	Greenlawn Dr. @ Atlas Rd.	1	3	0		4,500	1	3	0	0	0	4	45
Columbia	PF 4	Millwood Ave MP: 22.084	House St MP: 0.162	Ped Flasher	1	1	0		22,500	1	1	0	0	2	4	45
District1	TS1256	S-273 MP: 1.028	0	Bush River @ Outlet Point	1	1	0		16,100	1	1	0	0	2	4	45
District1	TS1692	US21 MP: 8.081	I-20 MP: 71.165	North Main St. @ I-20 WB Ramp / Plumbers Rd.	0	0	0	I	16,600	0	0	0	2	2	4	45
District1	TS1870	S-5 MP: 0.083	S-88	N.Main St. @ Bartlette St.	0	4	0		600	0	4	0	0	0	4	45
District1	TS1345	S-30 MP: 0.701	S-1813	Leaphart Rd. @ Chris Dr./Harbor Dr./Orchard Dr.	2	2	0		11,000	2	2	0	0	0	4	45
District1	TS1541	US176 MP: 19.482	S-683	Broad River Rd. @ Marley Dr. / Briargate	1	1	0		37,600	1	1	0	0	2	4	45
District1	TS1331	US21 MP: 20.302	US176	Knox Abbott Dr. @ 9th St.	1	1	0		23,600	1	1	0	0	2	4	45
Columbia	TN 04	Two Notch Rd MP: 3.257	Read St MP: 0.138	Fiber	0	1	0		14,100	0	1	0	0	2	3	46
Columbia	365	Rosewood Dr MP: 1.051	Bluff Rd MP: 2.857		0	1	0		23,400	0	1	0	0	2	3	46
Columbia	RD 31	Rosewood Dr MP: 0.505	Gills Creek Pkwy	Fiber	0	1	0		15,400	0	1	0	0	2	3	46
District1	TS1351	S-204 MP: 6.712	Longs Pond Rd MP: 6.712	longs Pond Rd. @ East Bound Ramp	0	3	0		10,600	0	3	0	0	0	3	46
District1	TS1479	SC35 MP: 3.333	SC2 MP: 1.612	12th St. @ Frink St. RR	2	1	0		5,300	2	1	0	0	0	3	46
District1	TS1149	Main St S MP: 12.903	0	US-1King St @ SC-341 Main St	3	0	0		2,900	3	0	0	0	0	3	46
District1	TS1652	S-83 MP: 6.549	S-1274 MP: 0.831	Hardscrabble Rd. @ Brickyard Rd.	0	1	0		18,200	0	1	0	0	2	3	46
Columbia	TN 24	Two Notch Rd MP: 5.279	Cushman Rd	Fiber	0	1	0		23,800	0	1	0	0	2	3	46
Columbia	DS 08	Devine St MP: 2.448	Holly St MP: 0.7	New construction	0	0	0		13,600	0	0	0	0	2	2	47
District1	TS1758	S-33 MP: 0.571	S-1705 MP: 0.209	Trenholm Rd. Ext @ Oakcrest Dr.	1	1	0		11,200	1	1	0	0	0	2	47
Columbia	MS 15	Main St	Miller Ave		0	0	0		16,700	0	0	0	0	2	2	47
Columbia	MS 12	Main St MP: 3.873	Sunset Dr MP: 0.81		0	0	0		16,700	0	0	0	0	2	2	47
Columbia	MS 18	Main St	Monticello Rd		0	0	0		16,700	0	0	0	0	2	2	47
District1	TS1378	S-52 MP: 1.818	S-485	Old Cherokee Rd @ Old Chapin Rd	1	1	0		6,100	1	1	0	0	0	2	47
Columbia	77	Blanding St MP: 0.236	Sumter St MP: 1.617		1	1	0		8,700	1	1	0	0	0	2	47
Columbia	164	Gervais St MP: 1.421	Bull St MP: 20.864		0	0	0		31,400	0	0	0	0	2	2	47
District1	TS1514	SC16 MP: 2.602	S-961 MP: 0.1	W Beltline Blvd @ Truman St	0	0	0		22,200	0	0	0	0	2	2	47
District1	TS1526	S-59 MP: 0.628	I-77	Blythewood Rd. @ I-77 SB Exit Ramp	0	0	0	I	11,300	0	0	0	2	0	2	47
District1	TS1550	US176 MP: 15.384	S-757	Broad River Rd. @ Harbison Blvd. Rebuilt on 4/29/2020	0	0	0		18,700	0	0	0	0	2	2	47

**TRAFFIC SIGNALS OPERATIONS PRIORITIZATION RANKINGS
COATS MPO**

Maintained By	Custom Identifier	Primary Route	Secondary Route	Comment	Cabinets Average Age in Years	Controllers Average Age in Years	Support Poles by Type	Proximity to Interstate	AADT	Cabinet Points	Controller Points	Pole Points	Interstate Points	AADT Points	Total Points	COATS MPO Ranking
Columbia	145	Lady St MP: 0.791	Sumter St MP: 1.213		1	1	0		8,700	1	1	0	0	0	2	47
Columbia	154	Gervais St MP: 0.404	Huger St MP: 1.073	Intersection Camera	0	0	0		30,500	0	0	0	0	2	2	47
Columbia	RD 27	Rosewood Dr	Beltline Blvd MP: 7.175	Fiber	0	0	0		15,400	0	0	0	0	2	2	47
District1	TS1645	US76 MP: 31.717	US378 MP: 12.266990539551	Garners Ferry Rd @ Lower Richland Blvd	1	1	0		-	1	1	0	0	0	2	47
District1	TS1693	Risdon Way	Springs Rd N MP: 0.731		0	0	0		15,300	0	0	0	0	2	2	47
District1	TS1336	Lake Murray Blvd MP: 2.842	S-1238	SC-60 Lake Murray Blvd @ S-1238 Childs St- Irmo FD Substation	0	0	0		26,300	0	0	0	0	2	2	47
District1	TS1691	US21 MP: 7.87	I-20 MP: 71.08	North Main St. @ I-20 East Bound Ramp	0	0	0	I	8,200	0	0	0	2	0	2	47
District1	TS1572	S-52 MP: 1.5	Earth Rd	Clemson Rd. @ Earth Rd.	0	0	0		21,900	0	0	0	0	2	2	47
District1	TS1722	US1 MP: 6.128	S-977 MP: 0.82	Two Notch Rd. @ Pinestraw / Albritton	0	0	0		19,500	0	0	0	0	2	2	47
District1	TS1201	SC302 MP: 22.428	S-165 MP: 0.949	Airport Blvd. @ Sox St. / Memorial Dr.	0	0	0		12,100	0	0	0	0	2	2	47
District1	TS1477	SC35 MP: 4.744	US21	12th St. @ B. Ave. / Old Charleston Hwy.	0	0	0		13,900	0	0	0	0	2	2	47
Lexington	TS1453	US378 MP: 23.279	S-1676 MP: 0.001	Sunset Blvd. @ West Hospital Drive/Sunset Ct.	0	0	0		28,600	0	0	0	0	2	2	47
District1	TS1350	S-204 MP: 6.477	Longs Pond Rd MP: 6.477	Longs Pond Rd. @ West Bound Ramp	0	0	0		12,600	0	0	0	0	2	2	47
District1	TS1424	Lake Dr S MP: 15.499	0	SC-6 South Lake Dr @ Bluefield Rd	0	0	0		13,700	0	0	0	0	2	2	47
District1	TS1611	SC555 MP: 3.451	S-907 MP: 0.051	Farrow Rd. @ Cushman Rd.	0	0	0		13,100	0	0	0	0	2	2	47
Lexington	TS1368	SC6 MP: 7.249	S-485 MP: 0.539	SC-6 North lake Drive @ S-485 Old Cherokee Rd.	0	0	0		15,500	0	0	0	0	2	2	47
Columbia	203	Harden St MP: 0.436	Pendleton St	Harden St @ Pendleton St	0	1	0		-	0	1	0	0	0	1	48
Columbia	233	Greene St MP: 1.068	Pickens St MP: 1.096	Greene St @ Pickens St	0	1	0		7,900	0	1	0	0	0	1	48
Columbia	239	Greene St MP: 0.699	Laurens St MP: 0.09	Greene St @ Laurens St	0	1	0		3,000	0	1	0	0	0	1	48
Columbia	52	Huger St MP: 1.672	Laurel St MP: 2.068	Intersection Camera	0	1	0		-	0	1	0	0	0	1	48
Columbia	KR 18	Blossom St MP: 1.738	Kilbourne Rd MP: 2.197		0	1	0		3,300	0	1	0	0	0	1	48
District1	TS1387	S-70 MP: 1.836	S-168 MP: 6.6	Old Two Notch Rd. @ Emanuel Church Rd.	0	1	0		11,800	0	1	0	0	0	1	48
Columbia	195	Main St MP: 0.396	Pendleton St MP: 0.763	Main St @ Pendleton St	0	1	0		6,300	0	1	0	0	0	1	48
District1	TS1412	Old Orangeburg Rd MP: 1.251	0	Old Orangeburg & Southwood Final Inspection 3/30/2018	0	1	0		7,100	0	1	0	0	0	1	48
Columbia	MS 29	Main St N MP: 5.43	Fairfield Rd MP: 5.368		0	0	0		8,200	0	0	0	0	0	0	49
Columbia	MS 20	Main St	Lorick Ave		0	0	0		10,500	0	0	0	0	0	0	49
Columbia	PF 2	Medical Park Rd MP: 0.153	S-2091 MP: 0.153	Ped Crossing Mid -block Flasher	0	0	0		8,000	0	0	0	0	0	0	49
Columbia	212	Main St MP: 0.302	College St MP: 0.304	Main St @ College St	0	0	0		3,800	0	0	0	0	0	0	49
Columbia	CD 10	Academy	Colonial Dr MP: 0.171		0	0	0		6,400	0	0	0	0	0	0	49
Columbia	115	Hampton St MP: 0.696	Henderson St MP: 0.03	Hampton St @ Henderson St	0	0	0		4,700	0	0	0	0	0	0	49
Columbia	SF 14	Main St	Ashley St MP: 0.001	School / Traffic Signal crossing	0	0	0		8,200	0	0	0	0	0	0	49
Columbia	80	Pickens St MP: 1.984	Blanding St MP: 0.529	Pickens St @ Blanding St	0	0	0		2,900	0	0	0	0	0	0	49
Columbia	229	Main St MP: 0.207	Greene St MP: 1.447	Main St @ Greene St	0	0	0		3,700	0	0	0	0	0	0	49
Lexington	TS1980	Church St S MP: 1.452	Maiden Ln		0	0	0		5,600	0	0	0	0	0	0	49
District1	R-3201	S-65 MP: 3.803	S-663 MP: 5	Meadowfield Rd. @ Woodcrest Ln (Roundabout)	0	0	0		-	0	0	0	0	0	0	49
District1	R-3203	SC6 MP: 21.951	Fish Hatchery Rd MP: 3.64	SC-6 @ Fishhatchery (Roundabout)	0	0	0		-	0	0	0	0	0	0	49
District1	R-3205	Mineral Springs Rd MP: 1.931	0	Mineral Springs Rd @ Cromer Rd Roundabout	0	0	0		-	0	0	0	0	0	0	49
Columbia	117	Hampton St MP: 0.893	Gregg St MP: 0.48	Hampton @ Gregg St	0	0	0		1,800	0	0	0	0	0	0	49
Columbia	199	Pickens St MP: 1.284	Pendleton St MP: 0.37	Pickens St @ Pendleton St	0	0	0		7,900	0	0	0	0	0	0	49
District1	TS1441	Sunset Blvd MP: 26.735	0	US-378 Sunset Blvd @ House of Raeford Chicken Plant Final Inspection 7/12/2017 HAWK	0	0	0		9,600	0	0	0	0	0	0	49
Columbia	247	Main St MP: 0.098	Devine St MP: 0.092	Main St @ Devine St	0	0	0		2,100	0	0	0	0	0	0	49
District1	TS1401	Pisgah Church Rd MP: 5.685	Barr Rd MP: 16.389	S-204 Pisgah Ch Rd @ Longs Pond/Barr Rd	0	0	2000		7,300	0	0	0	0	0	0	49
District1	R-3202	S-83 MP: 1.238	S-940	Old Lexington Rd. @ Murray Lindler converted to Roundabout 6/2019	0	0	0		-	0	0	0	0	0	0	49
District1	R-4002			Piney Grove Rd @ Piney Woods Rd. (Roundabout)	0	0	0		-	0	0	0	0	0	0	49



Memorandum

TO: All Members of the CMCOG **Board of Directors**

FROM: Reginald Simmons, Deputy Executive Director/Transportation Director

DATE: December 7, 2023

SUBJECT: 2045 LRTP Amendment – CMCOG Regional Transportation Operations and Technology Strategic Planning Program

REQUESTED ACTION

The Central Midlands Council of Governments' staff requests approval to amend the 2045 LRTP to add the CMCOG Regional Transportation Operations and Technology Strategic Planning Program.

BACKGROUND

The purpose of the Regional Transportation Operations and Technology Strategic Planning Program is to guide the Central Midlands Council of Governments' efforts to deploy technology, tools and coordinated system procedures to manage the multimodal transportation system. Regional Transportation Operations and Technology is a set of tools and processes used by public and private operating agencies' staff to meet the day-to-day demands of the traveling public.

Transportation operations staff work to provide the best mobility services and facilities to people and businesses across the region every day. Rail and bus operators, maintenance crews, emergency responders, traffic management center staff, law enforcement personnel, Transportation District dispatchers, shared mobility providers and many others all work tirelessly to keep the transportation system operating safely and efficiently. Maintaining reliable operations also requires monitoring performance over time to improve service and to account for changes in transportation demand.

This approach examines existing challenges to transportation operations in the region and identifies a vision, goals and objectives for regional transportation operations and technology. Performance measures will be used to track progress. Several strategic initiatives are defined that will subsequently guide investments for the deployment of system operation projects. One of the first set of investments will be defined through the evaluation and implementation of the Carbon Reduction Program. The vision for the Regional Transportation Operations and Technology Strategic Planning is:

- Transportation systems serving all travel modes across the CMCOG area are interconnected, collaboratively operated, managed and maintained to optimize safe, reliable and efficient travel for all system users, contributing to the region's economic prosperity and high quality of life.

ATTACHMENT

- Goals for Regional Transportation Operations and Technology Strategic Planning
- Traffic Operations Prioritization Process
- Prioritized List of Traffic Signal Improvement Projects

Goals for Regional Transportation Operations and Technology Strategic Planning

Safe Operations

- Physical and technological improvements and intentional operations management deployed to both reduce crashes and achieve zero fatalities.

Efficient, Seamless Travel

- Interconnected systems across jurisdictions and modes are actively and cooperatively managed to optimize operator situational awareness, provide accurate and timely traveler information and allow collaborative transportation systems operation.

Travel Time Reliability

- Multimodal travel times are monitored in real-time and operations are managed to limit disruptions affecting travel time reliability.

Equitable Access

- People of all ages, abilities, languages, backgrounds, and incomes have access to safe and reliable mobility options.

Environmental Sustainability

- Apply technology, services and operations that reduce energy consumption, improve air quality and reduce greenhouse gas emissions.

Prioritization Process

The statewide signal ranking process is based on age of equipment, proximity of interstate, and AADT. The age of equipment and proximity of interstate information is obtained from the Traffic Signal Inventory Program, TEAMS. The AADT is obtained from ITMS. Points are given to each location based on the following criteria:

- Age of Controller (in years) = Age points
- Age of Cabinet (in years) = Age points
- Proximity of Interstate – If a location is at a ramp = 2 points, otherwise = 0 points
- AADT > 12,000 AADT = 2 points otherwise = 0 points

The life cycle of a signal is considered to be 15 years and any signal with more than 15 points is a candidate for a rebuild. Districts may choose signals that are not the highest ranking signals based on the following reasons:

- Specific knowledge of faulty or deteriorated signal equipment
- Signal requires more maintenance than normal
- If high ranking signal is part of an existing signal system, then adjacent signals may be included for improvements

High ranking signals may be bypassed based on the following criteria:

- Railroad, utility, or right of way issues are present that would add undue costs to the upgrade and require a lengthier project design
- A future project will impact the signal
- A resurfacing project will impact the signal
- The signal is a candidate for removal based on reductions in traffic volumes

TRAFFIC SIGNAL OPERATIONS PRIORITIZATION RANKINGS
CMCOG

Maintained By	Custom Identifier	Primary Route	Secondary Route	Comment	Cabinets Average Age in Years	Controllers Average Age in Years	Support Poles by Type	Proximity to Interstate	AADT	Cabinet Points	Controller Points	Pole Points	Interstate Points	AADT Points	Total Points	CMCOG Rankings
District1	TS1305	US1 MP: 1.675	S-58 MP: 0.609	Columbia Ave @ North Carolina Ave	21	21	0		7200	21	21	0	0	0	42	1
District2	TS2368	S-383 MP: 1.46	Johnstone St MP: 0.87	Glenn @ Johnstone	21	20	0		3700	21	20	0	0	0	41	2
District2	TS2357	SC395 MP: 10.28	S-60 MP: 1.569	Downtown	21	14	0		3800	21	14	0	0	0	35	3
District2	TS2366	S-60 MP: 1.17	Calhoun St MP: 0.099	Downtown	21	14	0		1250	21	14	0	0	0	35	3
District2	TS2363	S-642 MP: 0.21	Harrington St MP: 1.417	Downtown	20	14	0		2300	20	14	0	0	0	34	4
District2	TS2372	S-60 MP: 1.52	Caldwell St	Downtown	20	14	0		6600	20	14	0	0	0	34	4
District2	TS2364	S-60 MP: 1.43	College St MP: 0.129	Downtown	19	14	0		6600	19	14	0	0	0	33	5
District1	TS1355	SC302 MP: 6.27	S-73	Edmund Hwy. @ Fish Hatchery Rd.	23	7	0		12000	23	7	0	0	0	30	6
District2	TS2352	US76 MP: 12.923	SC34 MP: 22.98	Hardees north intersec.	21	6	0		17600	21	6	0	0	2	29	7
District1	TS1298	SC23 MP: 2.054	Church St N	SC-23 Church St. @ Wal-Mart	14	14	0		9400	14	14	0	0	0	28	8
District2	TS2358	SC395 MP: 10.35	Harrington St MP: 1.519		21	6	0		3900	21	6	0	0	0	27	9
District2	TS2356	SC395 MP: 10.14	S-90 MP: 0.959		21	6	0		2900	21	6	0	0	0	27	9
District2	TS2387	SC121 MP: 10.133	Louis Rich Rd		14	13	0		5300	14	13	0	0	0	27	9
District2	TS2354	US76 MP: 12.176	Evans St	Old Wal-Mart	15	10	0		16200	15	10	0	0	2	27	9
District2	TS2361	S-642 MP: 0.73	Evans St	At Nby. College	21	6	0		2600	21	6	0	0	0	27	9
District2	TS2374	SC391 MP: 8.391	S-26	Town of Prosperity	20	7	0		4400	20	7	0	0	0	27	9
District2	TS2380	SC34 MP: 19.402	SC34 Business MP: 19.402		20	6	0		3800	20	6	0	0	0	26	10
District2	TS2237	US76 MP: 19.677		at Wal-Mart	12	12	0		14500	12	12	0	0	2	26	10
District2	TS2181	S-58 MP: 2.13	Center St MP: 3.06	Harris Plant	17	7	0		14000	17	7	0	0	2	26	10
District2	TS2241	US76 MP: 17.001		County Office Complex	20	6	0		10900	20	6	0	0	0	26	10
District2	TS2388	US76 MP: 22.789	Cy Schumpert Rd MP: 3.18	Mid Carolina School 2nd light	14	12	0		4700	14	12	0	0	0	26	10
District1	TS1294	SC23 MP: 2.79	SC245 MP: 3.101	SC-23 Church St. @ SC-245 Lee St. / Columbia Farms Feed Mill	19	7	0		9400	19	7	0	0	0	26	10
District2	TS2384	SC219 MP: 0.781	S-731 MP: 0.117	(Newberry High Sch./Conv. Store)	19	6	0		9700	19	6	0	0	0	25	11
District2	TS2360	SC395 MP: 11.081	Pope St MP: 13.07	Pope St.	19	6	0		3900	19	6	0	0	0	25	11
District2	TS2381	SC219 MP: 0.091	Heritage Dr MP: 0.46	Super Wal-Mart	19	6	0		9700	19	6	0	0	0	25	11
District2	TS2359	S-90 MP: 0.71	Drayton St MP: 1.686		19	6	0		1700	19	6	0	0	0	25	11
District2	TS2367	S-60 MP: 0.87	Glenn St MP: 1.597	Video Store	19	6	0		6600	19	6	0	0	0	25	11
District2	TS2362	S-642 MP: 0.52	Calhoun St MP: 0.598	Below Nby. College	19	6	0		1250	19	6	0	0	0	25	11
District1	TS1293	SC23 MP: 2.891	S-39 MP: 0.12	SC-23 Church St. @ Main St. RR	18	7	0		5900	18	7	0	0	0	25	11
District2	TS2353	US76 MP: 12.349	Kinard Rd		11	11	0		16200	11	11	0	0	2	24	12
District4	TS4320	US21 MP: 4.252	SC34 MP: 31.728	US21/SC34(mm4.25)	22	2	0		3800	22	2	0	0	0	24	12
District2	TS2377	SC34 MP: 20.478	SC395 MP: 9.26		11	12	0		3800	11	12	0	0	0	23	13
District2	TS2383	SC34 MP: 23.229	Mt. Bethal Garmany Rd	Next to SCDOT	15	8	0		7600	15	8	0	0	0	23	13
District2	TS2351	US76 MP: 13.104	SC219	Walgreens/Rite Aide	15	6	0		17600	15	6	0	0	2	23	13
District4	TS4311	US321 MP: 10.19	S-61 MP: 4.969	US321/Moultrie(mm10.19)	21	2	0		6600	21	2	0	0	0	23	13
District2	TS2386	US76 MP: 22.464	SC773	Mid Carolina School 1st light	15	7	0		4700	15	7	0	0	0	22	14
District2	TS2379	US76 MP: 11.378	Whitener Rd MP: 1.061		11	11	0		7500	11	11	0	0	0	22	14
District2	TS2355	US76 MP: 11.856	Pender Ridge Rd	Produce Stand	16	6	0		7500	16	6	0	0	0	22	14
District1	TS1306	US1 MP: 1.08	US178 MP: 0.84	Columbia Ave @ Pine St	21	0	0		5100	21	0	0	0	0	21	15
District4	TS4312	US321 MP: 9.36	S-185 MP: 0.66	US321/Ninth(mm9.36)	19	1	0		6600	19	1	0	0	0	20	16
District4	TS4302	US321 Business MP: 2.452	S-61 MP: 6.07		18	2	0		4000	18	2	0	0	0	20	16
District2	TS2371	US76 MP: 13.82	SC34 MP: 22.078	Cromley Ford	8	8	0		17600	8	8	0	0	2	18	17
District2	TS2376	SC121 MP: 9.111	Pope St	Food Lion @ RXR	9	9	0		6700	9	9	0	0	0	18	17
District2	TS2385	SC34 MP: 21.797	Adelaide St MP: 0.369		14	1	0		6600	14	1	0	0	0	15	18
District4	TS4314	US321 MP: 8.28	SC213 MP: 18.659	US321/SC213(mm8.28)	15	0	0		6600	15	0	0	0	0	15	18
District1	TS1304	US1 MP: 1.99	S-17	US-1 Columbia Ave. @ Mitchell St./David Drive	15	0	0		7200	15	0	0	0	0	15	18

**TRAFFIC SIGNAL OPERATIONS PRIORITIZATION RANKINGS
CMCOG**

Maintained By	Custom Identifier	Primary Route	Secondary Route	Comment	Cabinets Average Age in Years	Controllers Average Age in Years	Support Poles by Type	Proximity to Interstate	AADT	Cabinet Points	Controller Points	Pole Points	Interstate Points	AADT Points	Total Points	CMCOG Rankings
District2	TS2382	SC121 MP: 10.56	College St MP: 1.67		3	10	0		5300	3	10	0	0	0	13	19
District1	TS1150	US1 MP: 2.208	S-47 MP: 0.005	Main St. @ Church St.	5	5	0		13100	5	5	0	0	2	12	20
District2	TS2378	US76 MP: 13.287	Johnstone St	Super Wal-Mart	3	6	0		17600	3	6	0	0	2	11	21
District4	TS4310	US321 ByPass MP: 11.676	SC34 MP: 19.409	US 321/SC 34 & SC 200 (mm 11.67)	9	2	0		6600	9	2	0	0	0	11	21
District2	TS2375	US76 MP: 10.921	SC121 MP: 11.479	Hail's Truck Stop	3	7	0		7500	3	7	0	0	0	10	22
District1	TS1299	SC23 MP: 1.693	S-17 MP: 0.229	Church St @ Mitchell St./Palmetto Propane	5	5	0		9400	5	5	0	0	0	10	22
District1	TS1359	SC302 MP: 17.659	S-103 MP: 4.171	SC-302 Main St. @ Ramblin Rd.	0	8	0		15200	0	8	0	0	2	10	22
District4	TS4303	US321 Business MP: 2.303	S-80 MP: 0.11	Liberty/Congress (mm2.30)	3	2	0		4000	3	2	0	0	0	5	23
District4	TS4305	S-61 MP: 5.97	S-77 MP: 0.68	Washington/Vanderhorst(mm5.97)	3	2	0		2600	3	2	0	0	0	5	23
District4	TS4301	US321 Business MP: 2.62	S-56 MP: 0.12	Congress/College(mm2.62)	1	1	0		4000	1	1	0	0	0	2	24
District4	TS4304	US321 Business MP: 2.174	S-88 MP: 0.618	Congress/Moultrie(mm2.17)	1	1	0		4000	1	1	0	0	0	2	24
District1	TS1354	US178 MP: 22.822	SC302 MP: 5.219	US-178 Pine St. @ SC-302 Main St.	1	1	0		3800	1	1	0	0	0	2	24
District1	TS1300	SC23 MP: 0.75	SC391 MP: 6.21	Church St. @ Pine St.	1	1	0		6900	1	1	0	0	0	2	24
District4	TS4319	SC213 MP: 1.6	S-16 MP: 1.068	SC 213 @ S-16 Parr Rd./Jenkinsville Rd.(mm1.6)	0	0	0		5800	0	0	0	0	0	0	25

Please note:	District 1	Lexington County
	District 1	Richland County
	District 2	Newberry County
	District 4	Fairfield County



Memorandum

TO: All Members of the CMCOG **Board of Directors**

FROM: Reginald Simmons, Deputy Executive Director/Transportation Director

DATE: December 7, 2023

SUBJECT: 2020 – 2027 TIP Amendment – Columbia Traffic Signals Study
2024 & 2025 UPWP Amendment
2045 LRTP Amendment

REQUESTED ACTION

The Central Midlands Council of Governments' staff requests approval to amend the 2020 – 2027 TIP to add \$300,000 in guideshare funds for the Columbia Traffic Signal Study. This request will also amend the 2045 Long Range Transportation Plan and the 2024 & 2025 Unified Planning Work Program.

BACKGROUND

The operation of a traffic control system should closely mirror a city's policy goals and objectives. Managing traffic signals is important because signals directly impact the quality of the transportation system. While geometric enhancements to a corridor may demarcate space for bikes and buses and create a more multi-modal cross-section, signal timing influences delay, compliance, safety, and mode choice.

Traffic signal timing that provides insufficient time for someone to cross the street, for instance, is likely to create an unpleasant experience and may discourage walking entirely. Likewise, significant delays may cause street users to violate the traffic signal or take unsafe risks entering intersections.

In partnership with SCDOT, CMCOG member governments, and the COMET, the Central Midlands Council of Governments will perform a Columbia Traffic Signal Study to enhance safety, reduce congestion, and promote a pedestrian friendly multi-modal transportation network. Signal timing is an essential tool, not just for the movement of traffic, but also for a safer environment that supports walking, bicycling, public transportation, and economic vitality. The outcomes of this study will create a plan of action that will facilitate traffic signal improvements throughout the City of Columbia.

ATTACHMENT

COATS MPO Study Area
City of Columbia Projects Highlighted in Green (Enclosure 4)

**Financial Statement-CMCOG
December 31, 2023**

	<u>Approved Budget</u>	<u>Y-T-D Actual</u>	<u>Percent of Budget</u>
Revenue			
Local Revenue			
Member Governments	668,772.00	334,386.02	50%
State Aid	125,102.00	97,346.00	78%
Interest	400.00	271.77	68%
Fringe Recovery	1,822,838.00	567,138.87	31%
Indirect Cost Recovery	740,303.00	225,213.16	30%
Total Local Revenue	<u>3,357,415.00</u>	<u>1,224,355.82</u>	<u>36%</u>
Program Revenue			
Aging Planning & Administration	6,596,039.00	3,032,010.04	46%
Midlands Workforce Development Board	4,619,104.00	1,984,718.13	43%
Transportation	2,772,547.00	278,757.89	10%
Regional Planning	240,915.00	18,409.82	8%
Community Development	70,000.00	117,983.54	169%
Economic Development Administration	333,360.00	36,422.56	11%
Local Contracts	41,000.00	12,487.76	30%
Total Program Revenue	<u>14,672,965</u>	<u>5,480,789.74</u>	<u>37%</u>
Total Revenue	<u>18,030,380</u>	<u>6,705,145.56</u>	<u>37%</u>
Expenses			
Operating Expenses			
Personnel Costs	4,277,199	1,884,763.61	44%
Fringe and Indirect Cost Allocation	2,244,189	792,352.03	35%
Operations and Maintenance	1,403,484	487,837.08	35%
Employee Training & Development	82,390	21,331.34	26%
Travel, Transportation & Board Expense	85,419	20,378.12	24%
Consultants and Contracts	8,715,582	3,443,046.67	40%
Capital Outlays	119,000	7,750.00	7%
Transfer To/(From) Other Programs	624,509	13,420.03	11%
Total Expenses	<u>17,551,772</u>	<u>6,670,878.88</u>	<u>38%</u>
Revenue Over/(Under) Expenses		<u>34,266.68</u>	



MEMORANDUM

TO: CMCOG Environmental Planning Advisory Committee

FROM: Gregory Sprouse, Director of Research, Planning, and Development

DATE: February 17, 2024

SUBJECT: Major 208 Plan Amendment: Richland County Utilities - Eastover
WWTP Expansion

REQUESTED ACTION

CMCOG staff will introduce a 208 plan amendment request to expand the Richland County Utilities-Eastover Wastewater Treatment Plant from 1.2 MGD to 2.5 MGD. Staff is asking for the CMCOG Board's approval of this 208 plan amendment request.

PROJECT BACKGROUND

The Richland County-Eastover WWTP discharges into the Wateree River and provides treatment service for Southeast Richland County and the Town of Eastover. The 208 Plan for the Central Midlands Region requires a major plan amendment for the expansion of existing WWTPs that will be expanded by at least 50% of their current design capacity. The CMCOG Environmental Planning Advisory Committee (EPAC) recommended approval of the 208 Plan amendment at their January 17, 2024 meeting. As part of the recommendation, EPAC requested clarification from DHEC on Richland County's proposed phosphorous sharing agreement between their two WWTPs. DHEC provided the requested clarification. Supporting documentation is attached.

ATTACHMENTS:

DHEC Clarifications
208 Plan Amendment Submission Requirements
Preliminary Engineering Report (not included in hardcopy agenda packets)



February 1, 2024

Shawn Clarke
Water Facilities Permitting Director
DHEC Bureau of Water
2600 Bull Street
Columbia, SC 29201

Dear Mr. Clarke,

Richland County Utilities is requesting an amendment to the Central Midlands 208 Water Quality Management Plan for the expansion of the Eastover Wastewater Treatment Plant from 1.2 MGD to 2.5 MGD. We brought this request before our Environmental Planning Advisory Committee (EPAC) at their January 17, 2024 meeting. During discussion of the plan amendment request, our committee requested clarification from DHEC regarding any potential impacts from Richland County's proposed phosphorous sharing arrangement between their two WWTPs. Specifically, we are requesting a written response from DHEC on the following questions:

- Will phosphorus limits for existing wastewater dischargers on the Congaree River be directly impacted as a result of the proposed phosphorus sharing arrangement between the Broad River WWTP and Eastover WWTP?
- If there is an increase in phosphorus loading to the Broad River from the Broad River WWTP as a result of the proposed phosphorus sharing arrangement, does it in any way directly restrict the total phosphorus loading downstream that will be allowed in the Congaree River?
- Does the proposed phosphorus sharing arrangement directly impact the phosphorus loading to Lake Marion, which would thereby indirectly impact dischargers on the Congaree River?
- Will the proposed phosphorous sharing agreement be based on 7.09 lbs/day Total Phosphorus for the Eastover plant and the current permitted lbs/day of Total Phosphorus for the Broad River plant?

Please let me know if you have any questions or need additional information from us in order to provide a response to these questions. Thank you so much for your time and consideration.

Best Regards,

A handwritten signature in blue ink that reads "Gregory Sprouse".

Gregory Sprouse
Director, Research, Planning and Development

DHEC WLA Responses to Central Midlands COG February 1, 2024 Letter to Shawn Clarke

Date: 2/13/2024

Re: Richland County Utilities WWTPs Phosphorus Sharing

1) Will the phosphorus limits for existing wastewater dischargers on the Congaree River be directly impacted as a result of the proposed phosphorus sharing arrangement between the Broad River WWTP and Eastover WWTP?

No, existing Congaree River dischargers will not be affected. Any increase in load to the Wateree River resulting from the Eastover WWTP will be mitigated by a decrease in load from the Broad River WWTP on the Broad River, which flows to the Congaree River. The location limiting the phosphorus loading is in Lake Marion, not in the Congaree River. The goal is to maintain the current load reaching Lake Marion.

2) If there is an increase in phosphorus loading to the Broad River from the Broad River WWTP as a result of the proposed phosphorus sharing agreement, does it in any way directly restrict the total phosphorus loading downstream that will be allowed in the Congaree River?

No. Any increase in load to the Congaree River resulting from the Broad River WWTP will be mitigated by a decrease in load from the Eastover WWTP on the Wateree River. The goal is to maintain the current load reaching Lake Marion.

3) Does the proposed phosphorus sharing arrangement directly impact the phosphorus loading to Lake Marion, which would thereby indirectly impact dischargers on the Congaree River?

No. The proposed sharing agreement will keep the load to Lake Marion the same so the total phosphorus loading from dischargers not involved in the agreement will not be impacted.

4) Will the proposed phosphorus sharing agreement be based on 7.09 lbs/day Total Phosphorus for the Eastover plant and the current permitted lbs/day of Total Phosphorus for the Broad River Plant?

The Eastover WWTP SC0047911 permit issued 11/15/2021 and modified 6/22/2023 has the correct permitted load of 8.23 lbs/day total phosphorus (on page 18 for design flow 1.2 MGD). The increase from 7.09 lbs/day to 8.23 lbs/day was a result of reallocation of total phosphorus from several smaller discontinued discharges that were consolidated into Eastover WWTP.

The sharing agreement will be based on 8.23 lbs/day from the Eastover plant and 69.0 lbs/day from the Broad River plant SC0046621 (current permit issued 2/6/2018, modified 6/22/2023).

**RICHLAND COUNTY GOVERNMENT
UTILITIES DEPARTMENT**

7525 Broad River Road, Columbia, SC 29063
T 803-401-0050 | F 803-401-0030 | TDD 803-576-2045
rcu_service@richlandcountysc.gov | richlandcountysc.gov



December 15, 2023

Mr. Gregory Sprouse, AICP
Director of Research, Planning, and Development
Central Midlands Council of Governments
236 Stoneridge Drive
Columbia, SC 29210

Re: 208 Minor Plan Amendment Request
Eastover WWTP Expansion

Dear Mr. Sprouse,

We would like to request a Minor Plan Amendment to the "208 Water Quality Management Plan for the Central Midlands Region". This amendment is requested to allow RCU to discharge 2.5 MGD to the Wateree River from the Eastover WWTP. Along with this letter, the CMCOG has been provided a 208 Water Quality Management (WQM) Plan Amendment Request document including necessary information as called out in Section 3 Administrative Procedures of the WQM Plan. The draft PER is attached as an appendix within the 208 WQM Plan Amendment Request document.

In accordance with the 208 Water Quality Management Plan administrative procedures for plan amendment submission requirements (page 40), see our comments below;

Thank you for your attention to this matter. Please do not hesitate to contact me should you have any questions or need additional information.

Sincerely,

A handwritten signature in blue ink, appearing to read "Bill Davis".

William (Bill) H. Davis, PE
Director
Richland County Government
Utilities Department

Attachment

CC: John M. Thompson, Ph.D., MBA, ICMA-CM, CPM, SCCEM
Leonardo Brown, MBA, CPM

208 Plan Amendment Request

Richland County Utilities

December 2023

Prepared for:

Richland County Utilities
7525 Broad River Road
Irmo, SC 29063

Prepared by:

AECOM Technical Services, Inc.

AECOM
2151 Pickens Street
Columbia, SC 29201
aecom.com

Project Number: 60717190

Copyright © 2023 by AECOM

All rights reserved. No part of this copyrighted work may be reproduced, distributed, or transmitted in any form or by any means without the prior written permission of AECOM.

Table of Contents

1.	Detailed Description and Scope of Project	4
1.1	Background.....	4
1.2	Request for Amendment to 208 WQM Plan	4
2.	Preliminary Engineering Data Regarding Facility Design and Cost	5
3.	Financing Strategy And / Or Feasibility Analysis	6
4.	Potential Fiscal / Engineering Impact on Existing Facilities.....	7
5.	Associated Environmental Risks or Impacts	8
6.	Project Justification or Need	9
7.	Summary Examination of Alternative Options	10
8.	Timing and Phasing of the Project.....	11
8.1	Proposed Timing and Phasing.....	11

APPENDIX A – PRELIMINARY ENGINEERING REPORT

APPENDIX B – SCIIP GRANT AWARD

1. Detailed Description and Scope of Project

1.1 Background

This 208 Water Quality Management (WQM) Plan Amendment Request contains the submittal by Richland County Utilities (RCU) for an amendment to the current 208 WQM Plan for the Central Midlands Region. The existing Eastover WWTP is a 1.2 MGD rated facility with a discharge into the Wateree River. This submittal requests an increase in discharge capacity to 2.5 MGD. Based on planning efforts by RCU, it is anticipated that the Eastover WWTP will require an update to 5 MGD in the future to accommodate the growth projected in southeast Richland County.

1.2 Request for Amendment to 208 WQM Plan

Section 3 Administrative Procedures of the 208 WQM Plan provides guidelines for Plan Amendment Submission Requests as well as Review Criteria for evaluating a Plan Amendment Submittal.

Proposed Amendment. This request contains the submittal by RCU for a proposed amendment to the current 208 WQM Plan to increase the discharge of the Eastover WWTP to 2.5 MGD with a discharge into the Wateree River in Richland County. The estimated cost of this expansion would be \$18,432,283 as estimated by others and included in the RCU SCIIP Application. The proposed expansion would be partially paid for by a \$10 M SCIIP grant.

The Project. The proposed project will include several upgrades to the plant to accommodate the increase to 2.5 MGD. These upgrades include new headworks, activated sludge process that is anaerobic, anoxic, and oxic (AAO), two new clarifiers, two aerobic digesters, dewatering equipment, a plant water system, new chemical feed systems for lime and alum, new disinfection and dechlorination facilities, a new effluent line, and a new lab, office and maintenance building.

2. Preliminary Engineering Data Regarding Facility Design and Cost

A Preliminary Engineering Report for the project has been prepared by AECOM and is attached as Appendix A. Project description, location, design, and additional information is included in the PER. The PER included in Appendix A will be submitted to SCDHEC by mid-January 2024.

3. Financing Strategy And / Or Feasibility Analysis

RCU will be responsible for financing the proposed project. RCU has received a \$10 M SCIP grant from the Rural Infrastructure Authority. The approval letter is included as Appendix B. The estimated remaining \$8,432,283 for the WWTP expansion and upgrade based on estimates by others and included in the RCU SCIP Application will be paid through the Richland County Utilities Enterprise Fund.

4. Potential Fiscal / Engineering Impact on Existing Facilities

The project will have no fiscal or engineering impact on the existing wastewater facilities as RCU is the only authorized service provider in the area. The permitted concentrations for BOD₅ and ammonia would remain the same.

The total phosphorus loading should increase due to the elimination of four (4) NPDES permits that are now discharging to the Eastover WWTP which include Richland School District One's Gadsden Elementary School, Hopkins Elementary School, and Hopkins Middle School WWTPs as well as the McEntire Joint National Guard Base WWTP. RCU is requesting phosphorus sharing with their Broad River WWTP for their NPDES Permit with the 2.5 MGD permit limits. This would allow flexibility in the treatment process at the Eastover WWTP. The total amount of phosphorus loading for the RCU WWTPs combined would remain unchanged.

5. Associated Environmental Risks or Impacts

There are no known environmental risks or impacts expected from this project. The improvements require land disturbance activities within the boundaries of the WWTP site as well as with the existing effluent line and diffuser. These activities will be permitted, and the required sediment and erosion control will be utilized. The permitted concentrations for BOD₅ and ammonia would remain the same. The total phosphorus loading should increase due to the elimination of four (4) NPDES permits that are now discharging to the Eastover WWTP which include Richland School District One's Gadsden Elementary School, Hopkins Elementary School, and Hopkins Middle School WWTPs as well as the McEntire Joint National Guard Base WWTP. RCU is requesting phosphorus sharing with their Broad River WWTP for their NPDES Permit with the 2.5 MGD permit limits. This would allow flexibility in the treatment process at the Eastover WWTP. The total amount of phosphorus loading for the RCU WWTPs combined would remain unchanged.

6. Project Justification or Need

Based on data obtained from the Central Midland's COG "2020-2050 Population Projection Report", Southeast Richland County has seen its population grow significantly since 1970. Potential exists for significant future development due to the proximity to downtown Columbia and availability of land for future growth. The Hopkins area of Lower Richland County as outlined in the report could see development as well with the expansion of sewer in the area. The Shop Road Extension that will serve the burgeoning industrial expansions taking place in this section such as Jushi Fiberglass on Bluff Road will also increase sewer demand. For the East Richland portion of the county, the report states that if plans to extend water and sewer lines into Lower Richland occurs, then population growth may occur and could total close to 10,000 residents by 2050.

RCU has seen significant interest in development in the southeast Richland County area which is served by the Eastover WWTP. RCU has a high demand for sewer capacity in this area based on their tracking with the Capacity Assurance Program (CAP). The Eastover WWTP is the only WWTP that serves this portion of the county. RCU has added customers from the City of Columbia's service area as well.

7. Summary Examination of Alternative Options

An antidegradation analysis was conducted by AECOM, and a detailed review of the alternatives is included in the PER which is included as Appendix A. Alternatives such as conservation, reclaimed water use, land application and discharge to other systems were considered.

8. Timing and Phasing of the Project

This project is a high priority for the Eastover WWTP and RCU. Work should begin as soon as possible. This will provide Eastover with enough time to finish the project within the timeframe required by the SCIIP grant.

8.1 Proposed Timing and Phasing

Listed below is the anticipated schedule for this project:

- Submission of the PER for upgrade: December 2023
- Submission of the proposed 208 WQM Plan Amendment: January 2024
- Project Design Completion: May 2024
- Bid and Award: July – October 2024
- Begin Construction on the WWTP: October 2024
- Complete Construction and Startup of WWTP: May 2026



MEMORANDUM

TO: CMCOG Board of Directors

FROM: E. Rocky Simmons, Ph.D. Community/Economic Development Planner

DATE: February 14, 2024

SUBJECT: South Crescent Regional Commission Grant Opportunities

The Southeast Crescent Regional Commission (SCRC) is a federal-state partnership authorized in the 2008 Farm Bill to promote and encourage economic development in areas of Alabama, Georgia, Mississippi, North Carolina, South Carolina, Virginia, and all of Florida. SCRC invests in projects supporting basic infrastructure, business development, natural resources, and workforce/labor development.

As part of the SCRC Local Development District (LDD) Capacity Building Program, CMCOG will assist SCRC with outreach activities regarding SCRC grant opportunities for local governments, community development groups, the business community, and the public. In addition, the CMCOG will serve as a liaison between SCRC and State and local governments, nonprofit organizations (including community-based groups and educational institutions), the business community, and citizens, planning regional projects. The SCRC State Economic and Infrastructure (SEID) Grant Program consists of funding for public infrastructure projects, telecommunications, transportation, and projects to support basic health care, access to affordable housing, business, workforce development, resource conservation and preservation, tourism, and recreation.

CMCOG staff will provide an overview of the SCRC grant program and planning process. For more information on the SCRC program, contact E. Rocky Simmons, Ph.D., at ESIMMONS@CMCOG.ORG. Additional information about the program can be found on the SCRC website:

<https://scrc.gov/>

Executive Summary

Overview of SCRC

THE SOUTHEAST CRESCENT REGIONAL COMMISSION (SCRC) is an economic development partnership agency of the federal government and seven state governments. SCRC’s mission is to build sustainable communities and strengthen economic growth across the Southeast Crescent region.

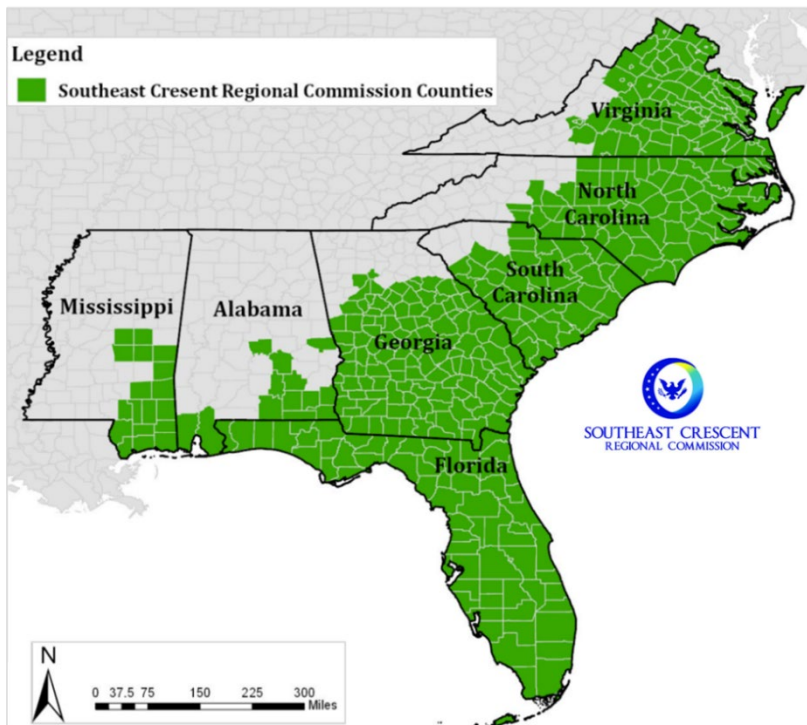
The SCRC Mission

To build sustainable communities and strengthen economic growth across the Southeast Crescent region

Authorized in the Food, Conservation, and Energy Act of 2008 (“The Farm Bill”)¹, SCRC’s focus is on addressing issues related to economic development and poverty in its 428 counties across Alabama, Florida, Georgia, Mississippi, North Carolina, South Carolina, and Virginia. Of the 428 counties, 42 percent are categorized as persistent poverty.

Persistent-poverty counties typically have high rates of unemployment; banking, healthcare, and broadband deserts; and a scarcity of quality, affordable housing and safe drinking water.² Looking ahead, SCRC will allocate at least 50 percent of funds in “distressed counties and isolated areas of distress in the region... that have high rates of poverty, unemployment, or outmigration”³ to ensure the economic development and sustainable growth of communities across the Southeast.

SCRC Service Area



About the SCRC Region

The Southeast Crescent region is home to over 51 million people who proudly represent and contribute to the unique spirit, culture, traditions, and natural environment of the region. From the Florida Everglades to the Mississippi Palisades, and the saltwater marshes in South Carolina’s Lowcountry to the Little River Canyon National Preserve in Alabama, the beauty of the Southeast Crescent is as unique as its people. Many SCRC counties are home to a larger share of Black and/or African American residents as well as Latinx and/or Hispanic residents as compared to the national average.⁴

“ People in this community genuinely love and care for each other and they are not hesitant to share their resources across the community or with neighbors. ”

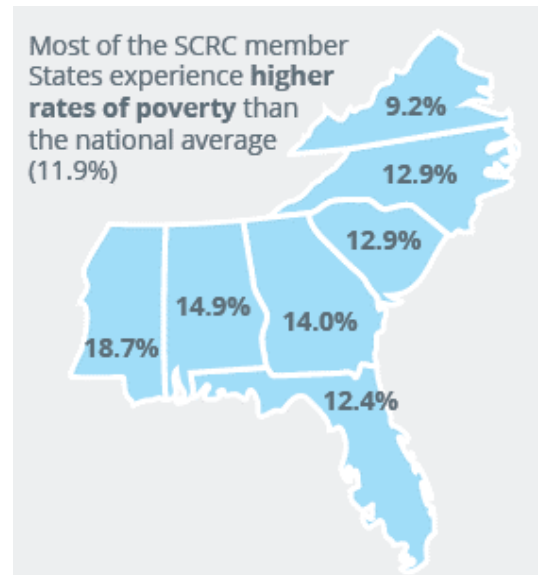
SCRC Survey Response, 2022.

Situated between the Gulf of Mexico and Atlantic Ocean, the region boasts more than 600 colleges and universities and is home to important historic sites and locations – from the home of Dr. Martin Luther King Jr. in Georgia, the famous Fredericksburg battlefield in Virginia, and the location of the first flight in Kitty Hawk, North Carolina – drawing visitors and residents year-round. In a survey launched by SCRC soliciting resident perspectives from across the seven-state region (see [Appendix I](#)), it was no surprise that

the top three community strengths identified were the people, educational institutions, and natural environment.

Despite the myriad of assets and opportunities, challenges remain. The Southeast Crescent region encompasses areas with among the highest rates of poverty in the United States, and almost six million people live in SCRC’s distressed counties. In 2020, state-wide poverty rates ranged from 9.2 percent in Virginia to 18.7 percent in Mississippi.⁵ In all seven states of SCRC, Black households face the largest gap in median household income, as compared to their Hispanic and non-Hispanic White counterparts.⁶

Infrastructure in the region – including water, transit, and broadband – is considered mediocre by the American Society of Civil Engineers,⁷ while healthcare costs, healthcare access, and health outcomes are among the lowest ranking in the country. Through an economic mobility lens, the region has lower-than-average median household income levels and job growth rates, while a lack of economic diversification in some communities leaves them susceptible to economic turbulence. Legacy barriers in housing impacts the socioeconomic security and well-being of residents today, while the region’s stunning environmental landscape comes at the high cost of vulnerability to extreme weather events, such as hurricanes and floods.



Guiding Principles

SCRC serves seven states – Alabama, Florida, Georgia, Mississippi, North Carolina, South Carolina, and Virginia – of which six are also served by the Appalachian Regional Commission (ARC) and Delta Regional Authority (DRA). Like SCRC, these regional commissions are charged with the mission to improve regional economic development by investing in programmatic activities across their service areas. The ARC and DRA have been active for 57 years and 22 years, respectively, and provide successful models of programs, projects, and activities that drive community and economic development, job growth, and socio-economic outcomes. SCRC is committed to building on the successful examples set forth by partner commissions; replicating and adapting best practices; and

using lessons learned to inform programming aimed to improve outcomes and drive growth in the Southeast Crescent region.

SCRC Roles

To successfully implement its strategic mission, SCRC recognizes the critical leadership role it plays in enabling the long-term growth and development of the region. SCRC commits to undertaking the following three roles:

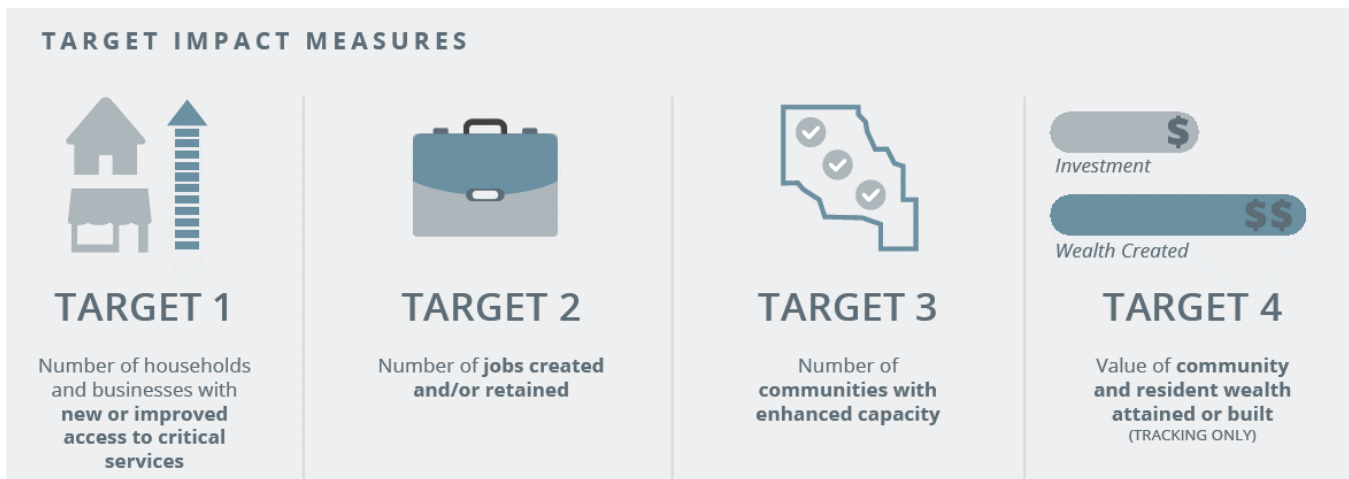
1. **Convener:** SCRC serves the important function of bringing together federal, state, and local government as well as private, non-profit, civilian, and other partners to coordinate various funding sources and to work collaboratively to invest resources and implement solutions that will catalyze community and economic development.
2. **Equity Driver:** SCRC invests in and supports projects, programs, and activities designed to transform the economy and to expand outcomes across the region, so improvements are more equitably experienced and shared among the diverse residents across urban and rural communities.
3. **Capacity Builder:** SCRC supports efforts that build community capacity by investing in and supporting under-resourced groups in successfully planning and executing programs and activities that will improve economic outcomes in SCRC communities and enhance overall quality of life for SCRC residents.



Florida Everglades; Credit: Florida Seminole Tourism

SCRC Impact Measures

At this critical moment, SCRC is positioned to set the standard for anti-poverty, sustainable community, and economic growth efforts in the region. Driven to affect change, SCRC established four key impact measures to evaluate all efforts and investments made by the agency from 2023 to 2027. These targets will measure the outcomes associated with all priority initiatives selected in the inaugural SCRC grant program. The fourth target – which serves to estimate returns on investment by assessing the value of community and resident wealth attained or built – is a tracking-only metric for SCRC informational purposes and will not be used to evaluate grant program outcomes.



- **Target 1: Number of households and businesses with new or improved access to critical services because of SCRC efforts or investments.** SCRC is committed to empowering community and economic development and growth by serving and impacting as many households, businesses, and residents as possible. SCRC aims to impact 3,000 households and businesses each year, and a total of 15,000 by FY 2027.
- **Target 2: Number of jobs created and/or retained through SCRC efforts and investments.** Spurring job creation and retention underpin a thriving economy and community. SCRC is committed to investments that will enable community and economic development through job growth, including 220 jobs created and/or retained in the first year, and 1,100 through FY 2027.
- **Target 3: Number of communities with enhanced capacity due to SCRC efforts or investments.** Of the 428 counties in SCRC, 179 are facing severe and persistent economic distress, and pockets of persistent poverty exist throughout the others. Capacity building, in the form of technical assistance, technology support, and institutional strengthening, enables communities to bridge critical service gaps and enhance quality of life for communities and their residents. This plan targets meaningful investment across the distressed counties and communities needing enhanced capacity, in at least 20 counties/communities annually, and 100 counties/communities by FY 2027. SCRC will allocate at least 50 percent of its grant program funding to counties and areas of distress.

- **Target 4: Value of community and resident wealth attained or built as a result of SCRC efforts or investments (tracking only).** Quantifying investment returns is an important process in ensuring effective allocation of funds. SCRC is uniquely positioned to address poverty in the region through investments that will build and generate long-term and intergenerational wealth opportunities. Through this target, SCRC seeks to gauge its estimated impact in order to inform and guide programmatic decisions in the future. For every \$1 invested in the region, SCRC seeks to create \$2 in wealth for its communities and residents. Using proxy measures, the value of wealth generation will be calculated by multiplying the number of people, households, or businesses impacted by the anticipated increase in wealth attained or built.
 - Scenario: SCRC invests \$1 million to support an environmental cleanup effort that impacts 100 local homes at \$20,000 per home. The total increase in property value and wealth generated due to this investment totals \$2 million. This achieves an investment ratio of 2 to 1.
 - Scenario: SCRC invests \$100,000 to revitalize a vacant or distressed property. This investment leads to increased property values for properties within a quarter-mile radius that total at least \$200,000. This achieves an investment ratio of 2 to 1.

	PERFORMANCE TARGETS	
	ANNUAL TARGET	FIVE-YEAR TARGET
HOUSEHOLDS AND BUSINESSES WITH IMPROVED ACCESS TO SERVICES	3,000	15,000
JOBS CREATED AND/OR RETAINED	220	1,100
NUMBER OF COMMUNITIES WITH ENHANCED CAPACITY	20	100
RETURN ON INVESTMENTS THROUGH COMMUNITY AND RESIDENT WEALTH ATTAINED OR BUILT (TRACKING ONLY)	2 TO 1 RATIO OF COMMUNITY AND RESIDENT WEALTH ATTAINED AND/OR BUILT TO VALUE OF SCRC INVESTMENT	

Note: These targets assume a FY 2023 launch of the SCRC grant program and annual funding of \$10 million over the five-year period. Changes in funding levels will require corresponding adjustments to the targets above.

Strategic Goals and Guiding Objectives

With a focus on service, equity, and resiliency, SCRC set six distinct strategic goals to both assess specific gaps in resident opportunities throughout the region and to support services and resources to help fill those gaps. SCRC will provide grant funding for the implementation of programs and/or projects that will: (1) invest in critical infrastructure, (2) improve health and support services access and outcomes, (3) strengthen workforce capacity, (4) foster entrepreneurial and business development activities, (5) expand affordable housing stock and access, and (6) promote

environmental conservation, preservation, and access. The six strategic goals are mutually reinforcing and are designed to drive impact across all four designated targets. Each strategic goal includes two to three guiding objectives that focus the strategic goal on actionable and effective, near-term, high-impact interventions.

As SCRC invests in driving positive outcomes across the six strategic goals and measuring impact against the four defined impact targets, the agency will emphasize its role as lead convener to coordinate cross-sector collaboration and champion equity-centered anti-poverty efforts that will enable the region’s economic development, community sustainability, and resident opportunity.



STRATEGIC GOAL 1: INVEST IN CRITICAL INFRASTRUCTURE

- 1.1 Expand the region’s basic water and sewer infrastructure to be more resilient
- 1.2 Expand and improve access to affordable and reliable digital infrastructure
- 1.3 Support expanded regional transportation infrastructure systems and transit services



STRATEGIC GOAL 2: IMPROVE HEALTH AND SUPPORT SERVICES ACCESS AND OUTCOMES

- 2.1 Support initiatives that expand access to affordable, high-quality healthcare and services that support overall mental and physical health
- 2.2 Provide support to build capacity for navigating and accessing support services



STRATEGIC GOAL 3: STRENGTHEN WORKFORCE CAPACITY

- 3.1 Promote workforce development programs for local high-demand job opportunities
- 3.2 Increase enrollment in and completion of critical training programs by investing in wrap-around services



STRATEGIC GOAL 4: FOSTER ENTREPRENEURIAL AND BUSINESS DEVELOPMENT ACTIVITIES

- 4.1 Support the expansion of access to business capital to support innovation, entrepreneurship, and economic equity
- 4.2 Invest in programs and business opportunities that address critical challenges facing SCRC communities while providing opportunities to attract and retain talent locally



STRATEGIC GOAL 5: EXPAND AFFORDABLE HOUSING STOCK AND ACCESS

- 5.1 Increase access to wrap-around services and legal assistance to resolve title, heirship, land tenure, and eviction issues
- 5.2 Support enrollment in and access to homebuyer programs
- 5.3 Invest in efforts to improve the affordability and availability of quality housing across the region



STRATEGIC GOAL 6: PROMOTE ENVIRONMENTAL CONSERVATION, PRESERVATION, AND ACCESS

- 6.1 Invest in air, water, and soil clean-up efforts that impact historically disadvantaged communities
- 6.2 Preserve and expand access to the SCRC region’s natural resources to increase outdoor recreation and tourism opportunities