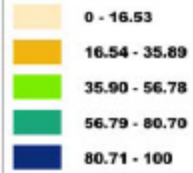
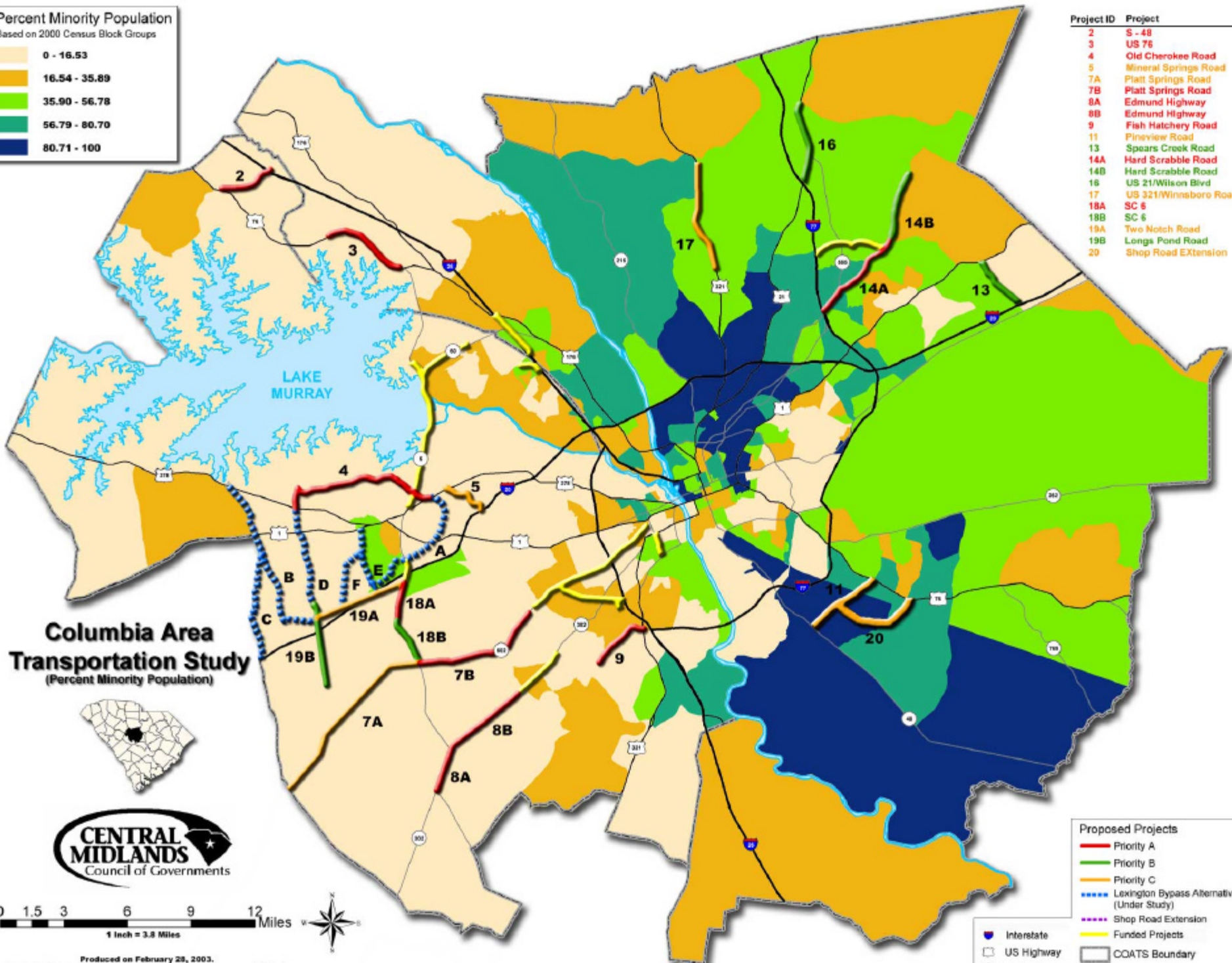


Percent Minority Population

Based on 2000 Census Block Groups



Project ID	Project
2	S - 48
3	US 76
4	Old Cherokee Road
5	Mineral Springs Road
7A	Platt Springs Road
7B	Platt Springs Road
8A	Edmund Highway
8B	Edmund Highway
9	Fish Hatchery Road
11	Pineview Road
13	Spears Creek Road
14A	Hard Scrabble Road
14B	Hard Scrabble Road
16	US 21/Wilson Blvd
17	US 321/Winnaboro Road
18A	SC 6
18B	SC 6
19A	Two Notch Road
19B	Longs Pond Road
20	Shop Road Extension



Columbia Area Transportation Study
(Percent Minority Population)



Produced on February 28, 2003.
Central Midlands Council of Government disclaims responsibility for damage or liability associated with the use of this information. All reasonable efforts have been made to ensure accuracy.

Proposed Projects

- Priority A
- Priority B
- Priority C
- - - - Lexington Bypass Alternatives (Under Study)
- - - - Shop Road Extension
- Funded Projects
- Interstate
- US Highway
- SC Highway
- COATS Boundary
- Municipalities